

BionicPro Squares

Lens Installation

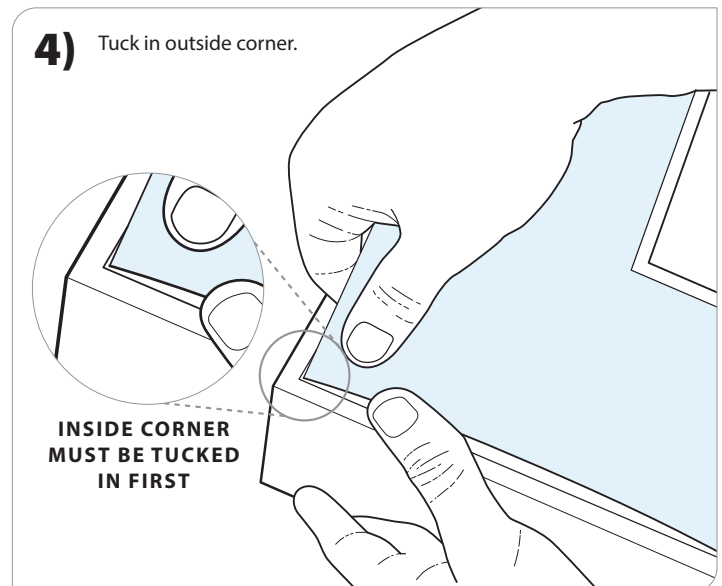
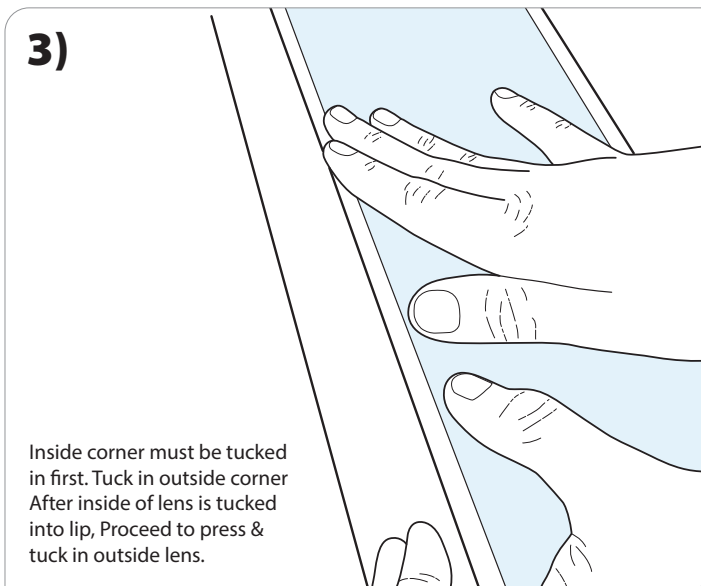
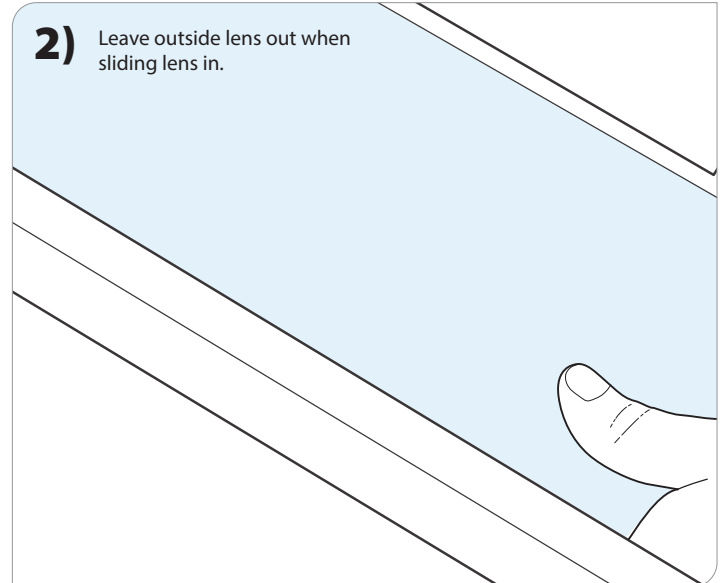
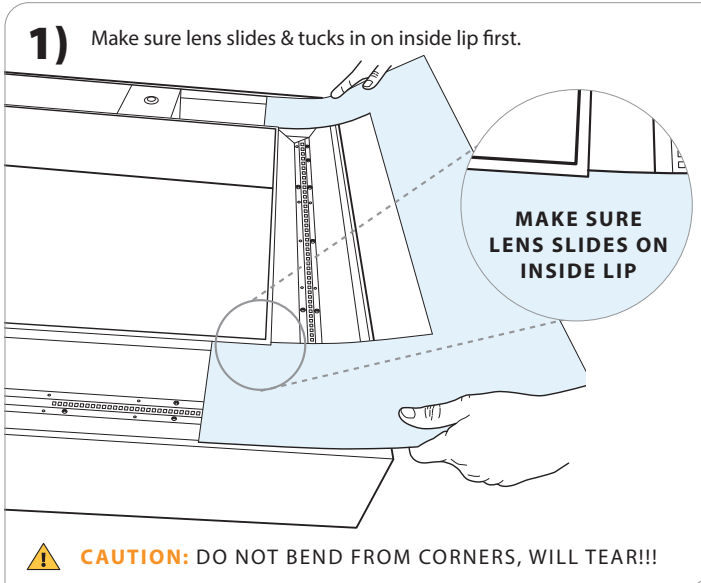
INSTALLATION INSTRUCTIONS



PRUDENTIAL LTG.

PRULITE.COM 213.746.0360

LENS PROVIDED IN (2) "U" SECTIONS AND WILL NEED TO BE FIELD TRIMMED.



WARNING: Ground fixture in accordance with local and national electrical codes. Failure to do so may result in serious personal injury. Fixture Installations should ONLY be done by a qualified licensed electrical professional.

USA Prudential Ltg. reserves the right to change design specifications or materials without notice. Please visit prulite.com for most current data. © 2026 All rights reserved—All products manufactured at: Prudential Lighting, 1774 E. 21st Street, Los Angeles, CA 90058.

BionicPro Squares

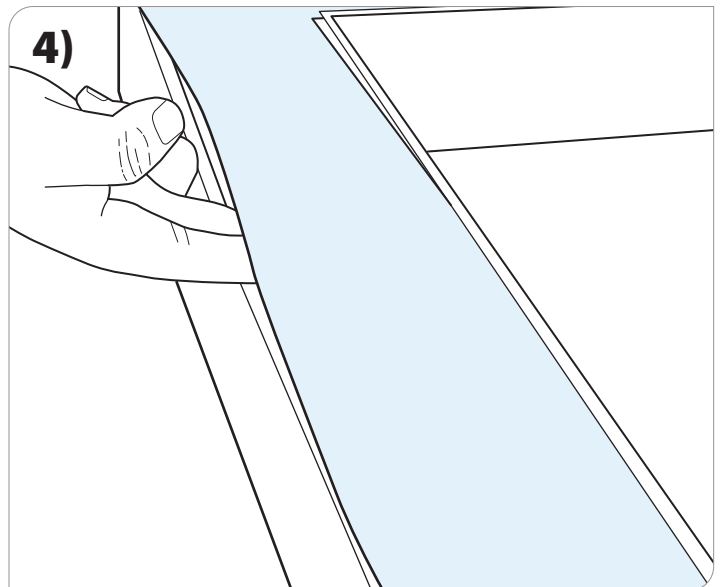
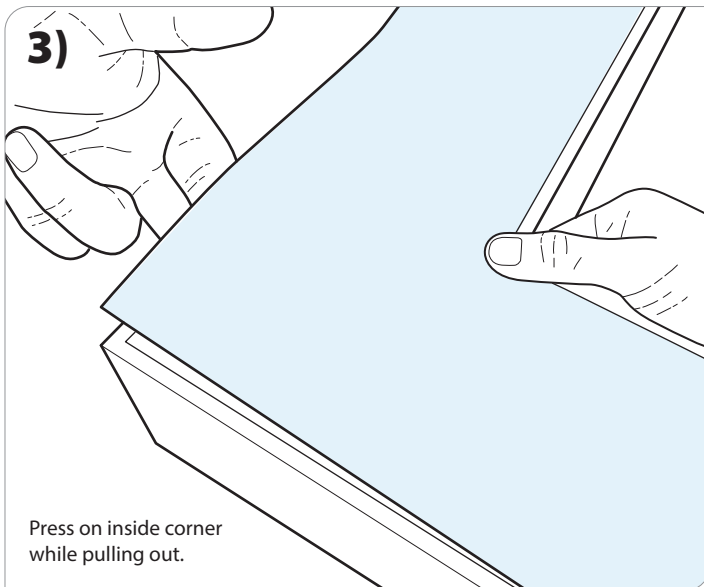
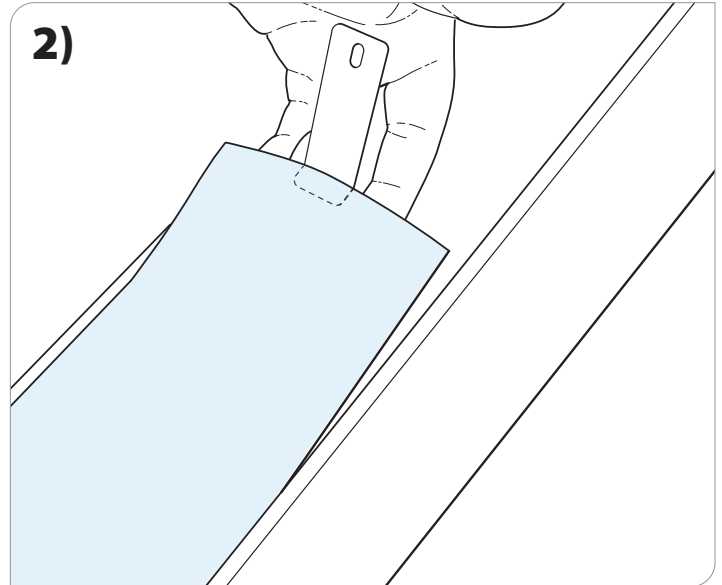
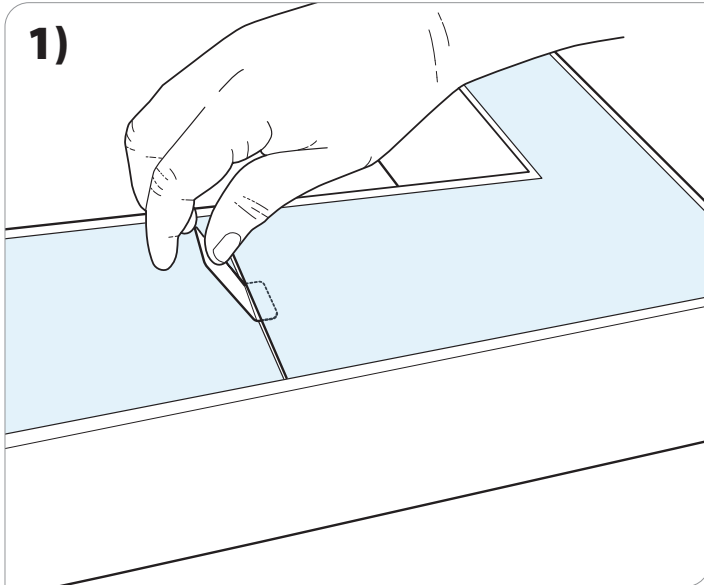
Lens Removal

INSTALLATION INSTRUCTIONS



PRUDENTIAL LTG.

PRULITE.COM 213.746.0360



 **CAUTION:** DO NOT BEND FROM CORNERS, WILL TEAR!!!

WARNING: Ground fixture in accordance with local and national electrical codes. Failure to do so may result in serious personal injury. Fixture Installations should ONLY be done by a qualified licensed electrical professional.

USA Prudential Ltg. reserves the right to change design specifications or materials without notice. Please visit prulite.com for most current data.
© 2026 All rights reserved—All products manufactured at: Prudential Lighting, 1774 E. 21st Street, Los Angeles, CA 90058.