



Prudential Lighting is a family business that cares greatly for the health and welfare of its employees, community and environment. Four generations of the same family have worked elbow-to-elbow with factory and office 'family' since 1955. World-class retirement benefits are just one of many reasons for amazing employee retention.

We take our 'Made in the USA' stamp seriously. Our products are made-made here, not shipped and assembled here. We boarded the green-train ages ago utilizing American made, locally sourced materials whenever possible. And we clean and paint our products using the most environmentally-friendly materials and processes available. Zero air emissions, zero water waste with our close-looped water filtration system, no Red Listed chemicals. Declare labeling was the next logical step. Please ask away if you have any questions about our policies or processes, we are all in this together.

What is Declare?

The International Living Future Institute's (ILFI) Declare 2.0 program is an ingredients initiative for building products, providing transparency of materials and leading to a healthier environment. Luminaire origin, chemical composition of materials (ingredients list) to make the luminaire (especially noting Red Listed chemicals) and end-of-life for the luminaire are all included in the Declare label.

Declare complies with:

- **LBC:** Living Building Challenge, Materials, Health & Happiness Petals
- **LEEDv4 and v4.1:** Building product disclosure and optimization, material ingredients Option 1 & 2
- **EPA EcoLabel Program:** Approved for federal purchasing projects
- **WELL Building Standard:** Feature 4: VOC Reduction
Feature 26: Toxic Material Reduction parts 1, 2, 3, 5,
Feature 26: Precautionary Material Selection

DECLARE DATABASE
(CLICK HERE)



PRUDENTIAL LTG.

Declare.

LBC Red List Approved

Products meet the written requirements of the LBC Red List Imperative but with an exception (PVC wiring). The product may contain one or more Red List chemicals if they fall under an existing, published LBC Temporary Exception.

Linear aluminum luminaires Prudential Lighting

Final Assembly: Los Angeles, California, USA

Life Expectancy: 10 Year(s)

End of Life Options: Recyclable (94-96%)

Ingredients:

100-00335-02: Aluminum; **100-00451-09:** Steel; **100-00924-01:** Electrical components¹; **100-00912-09:** Copper; **100-00099-03:** Aluminum; **100-00316-02:** Copolymer of styrene, hydroxy alkyl unsaturated acrylic monomers, alkyl unsaturated acrylic monomers and acrylic acid; 2-Propenoic acid, 2-methyl-, methyl ester, polymer with ethyl 2-propenoate; Methyl methacrylate; **18 Gauge Wire:** Copper; **PVC;** **100-00181-11:** Electrical components¹; **Unnamed Material:** Steel; **YGW:** Titanium dioxide; Aluminum hydroxide; Aluminum Oxide; N,N,N,N-tetrakis(4,6-bis(butyl-(N-methyl-2,2,6,6-tetramethylpiperidin-4-yl)amino)triazin-2-yl)-4,7-diazadecane-1,10-diamine; **100-00608-09:** Copper; **100-00042-10:** Poly[imino(1,6-dioxo-1,6-hexanedyl)imino-1,6-hexanedyl]; **100-00043-10:** Nylon; **100-00040-10:** Nylon; **100-00063-10:** Steel; **100-00555-08:** Aluminum; **100-00449-09:** Copper

¹LBC Temp Exception RL-002 - Small Electrical Components

Living Building Challenge Criteria:

I-13 Red List:

- | | |
|--|-----------------------------|
| <input type="checkbox"/> LBC Red List Free | % Disclosed: 100% at 100ppm |
| <input type="checkbox"/> LBC Red List Approved | VOC Content: Not Applicable |
| <input checked="" type="checkbox"/> Declared | |

I-10 Interior Performance: Not Compliant

I-14 Responsible Sourcing: Not Applicable

PRU-0001
EXP. 01 SEP 2023
Original Issue Date: 2021

MANUFACTURER RESPONSIBLE FOR LABEL ACCURACY
INTERNATIONAL LIVING FUTURE INSTITUTE™ living-future.org/declare



PRUDENTIAL LTG.

LBC Red List Approved

Products meet the written requirements of the LBC Red List Imperative but with an exception (PVC wiring). The product may contain one or more Red List chemicals if they fall under an existing, published LBC Temporary Exception.

Steel Pendant/Recessed Prudential Lighting

Final Assembly: Los Angeles, California, USA

Life Expectancy: 10 Year(s)

End of Life Options: Recyclable (94-96%)

Ingredients:

Steel; Copolymer of styrene, hydroxy alkyl unsaturated acrylic monomers, alkyl unsaturated acrylic monomers and acrylic acid; 2-Propenoic acid, 2-methyl-, methyl ester, polymer with ethyl 2-propenoate; Aluminum; Electrical components¹; Copper; Titanium dioxide; Electrical components¹; Methyl methacrylate; PVC; Aluminum hydroxide; Aluminum Oxide; Nylon; Poly[imino(1,6-dioxo-1,6-hexanediyl)imino-1,6-hexanediyl]; N,N,N,N-tetrakis(4,6-bis(butyl-(N-methyl-2,2,6,6-tetramethylpiperidin-4-yl)amino)triazin-2-yl)-4,7-diazadecane-1,10-diamine

¹LBC Temp Exception RL-002 - Small Electrical Components

Living Building Challenge Criteria:

I-13 Red List:

- | | |
|--|-----------------------------|
| <input type="checkbox"/> LBC Red List Free | % Disclosed: 100% at 100ppm |
| <input type="checkbox"/> LBC Red List Approved | VOC Content: Not Applicable |
| <input checked="" type="checkbox"/> Declared | |

I-10 Interior Performance: Not Compliant

I-14 Responsible Sourcing: Not Applicable

PRU-0002

EXP. 01 APR 2023

Original Issue Date: 2022

MANUFACTURER RESPONSIBLE FOR LABEL ACCURACY
INTERNATIONAL LIVING FUTURE INSTITUTE™ living-future.org/declare



PRUDENTIAL LTG.

LBC Red List Approved

Products meet the written requirements of the LBC Red List Imperative but with an exception (PVC wiring). The product may contain one or more Red List chemicals if they fall under an existing, published LBC Temporary Exception.

Pendant Aluminum luminaires Prudential Lighting

Final Assembly: Los Angeles, California, USA

Life Expectancy: 10 Year(s)

End of Life Options: Recyclable (94-96%)

Ingredients:

100-00335-02: Aluminum; **100-00451-09:** Steel; **100-00316-02:** Copolymer of styrene, hydroxy alkyl unsaturated acrylic monomers, alkyl unsaturated acrylic monomers and acrylic acid; 2-Propenoic acid, 2-methyl-, methyl ester, polymer with ethyl 2-propenoate; Methyl methacrylate; **100-00924-01:** Electrical components¹; **18 Gauge Wire:** Copper; **PVC;** **100-00181-11:** Electrical components¹; **YGW:** Titanium dioxide; Aluminum hydroxide; Aluminum Oxide; N,N,N,N-tetrakis(4,6-bis(butyl-(N-methyl-2,2,6,6-tetramethylpiperidin-4-yl)amino)triazin-2-yl)-4,7-diazadecane-1,10-diamine; **100-00912-09:** Copper; **Unnamed Material:** Steel; **100-00608-09:** Copper; **100-00042-10:** Poly[imino(1,6-dioxo-1,6-hexanediyl)imino-1,6-hexanediyl]; **87113:** Steel; **100-00043-10:** Nylon; **100-00040-10:** Nylon; **100-00063-10:** Steel; **100-00555-08:** Aluminum; **100-00449-09:** Copper

¹LBC Temp Exception RL-002 - Small Electrical Components

Living Building Challenge Criteria:

I-13 Red List:

<input type="checkbox"/> LBC Red List Free	% Disclosed: 100% at 100ppm
<input type="checkbox"/> LBC Red List Approved	VOC Content: Not Applicable
<input checked="" type="checkbox"/> Declared	

I-10 Interior Performance: Not Compliant

I-14 Responsible Sourcing: Not Applicable

PRU-0003
EXP. 01 NOV 2023
Original Issue Date: 2022

MANUFACTURER RESPONSIBLE FOR LABEL ACCURACY
INTERNATIONAL LIVING FUTURE INSTITUTE™ living-future.org/declare



PRUDENTIAL LTG.

Declare.

LBC Red List Approved

Products meet the written requirements of the LBC Red List Imperative but with an exception (PVC wiring). The product may contain one or more Red List chemicals if they fall under an existing, published LBC Temporary Exception.

Linear steel luminaires Prudential Lighting

Final Assembly: Los Angeles, California, USA

Life Expectancy: 10 Year(s)

End of Life Options: Recyclable (94-96%), Landfill (4-6%)

Ingredients:

100-00099-03: Steel; **100-00316-02:** Copolymer of styrene, hydroxy alkyl unsaturated acrylic monomers, alkyl unsaturated acrylic monomers and acrylic acid; 2-Propenoic acid, 2-methyl-, methyl ester, polymer with ethyl 2-propenoate; Methyl methacrylate; **100-00451-09:** Steel; **100-00924-01:** Electrical components¹; **100-00912-09:** Copper; **18 Gauge Wire:** Copper; **PVC;** **100-00335-02:** Steel; **100-00181-11:** Electrical components¹; **YGW:** Titanium dioxide; Aluminum hydroxide; Aluminum Oxide; N,N,N,N-tetrakis(4,6-bis(butyl-(N-methyl-2,2,6,6-tetramethylpiperidin-4-yl)amino)triazin-2-yl)-4,7-diazadecane-1,10-diamine; **Unnamed Material:** Steel; **100-00608-09:** Copper; **100-00042-10:** Poly[imino(1,6-dioxo-1,6-hexanediyl)imino-1,6-hexanediyl]; **100-00043-10:** Nylon; **100-00040-10:** Nylon; **100-00063-10:** Steel; **100-00555-08:** Aluminum; **100-00449-09:** Copper

¹LBC Temp Exception RL-002 - Small Electrical Components

Living Building Challenge Criteria:

I-13 Red List:

- | | |
|--|-----------------------------|
| <input type="checkbox"/> LBC Red List Free | % Disclosed: 100% at 100ppm |
| <input type="checkbox"/> LBC Red List Approved | VOC Content: Not Applicable |
| <input checked="" type="checkbox"/> Declared | |

I-10 Interior Performance: Not Compliant

I-14 Responsible Sourcing: Not Applicable

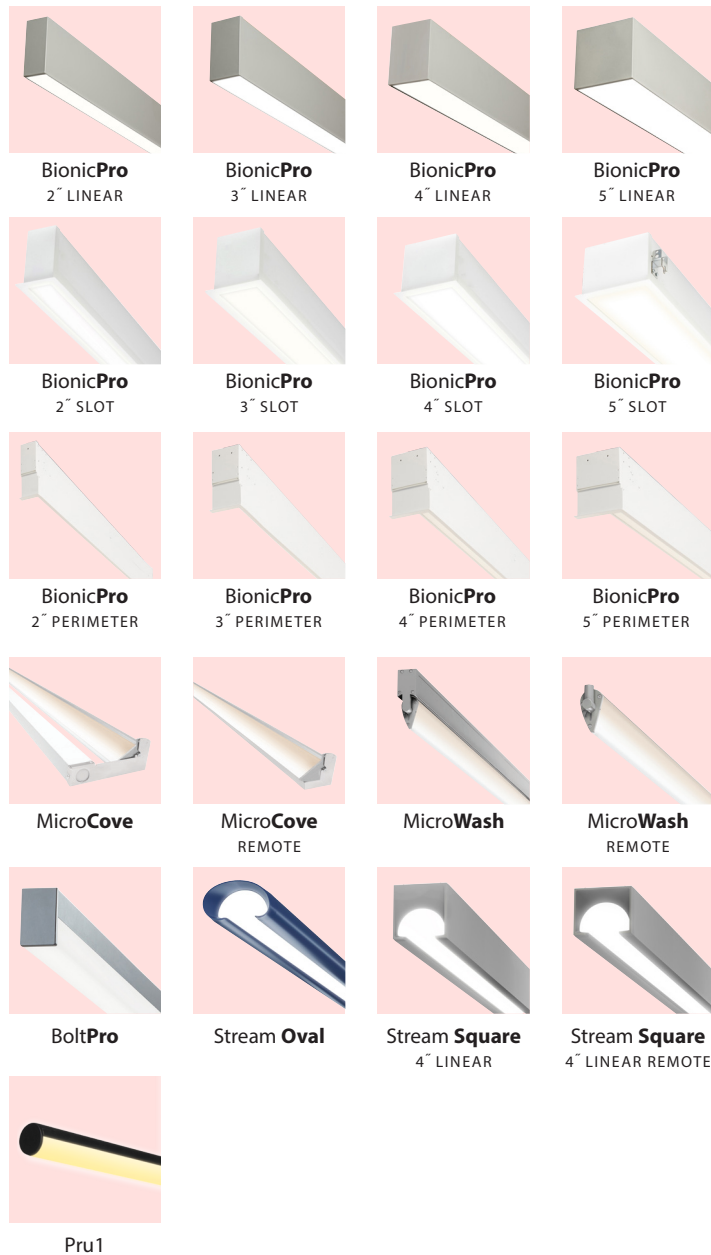
PRU-0004
EXP. 01 DEC 2023
Original Issue Date: 2022

MANUFACTURER RESPONSIBLE FOR LABEL ACCURACY
INTERNATIONAL LIVING FUTURE INSTITUTE™ living-future.org/declare

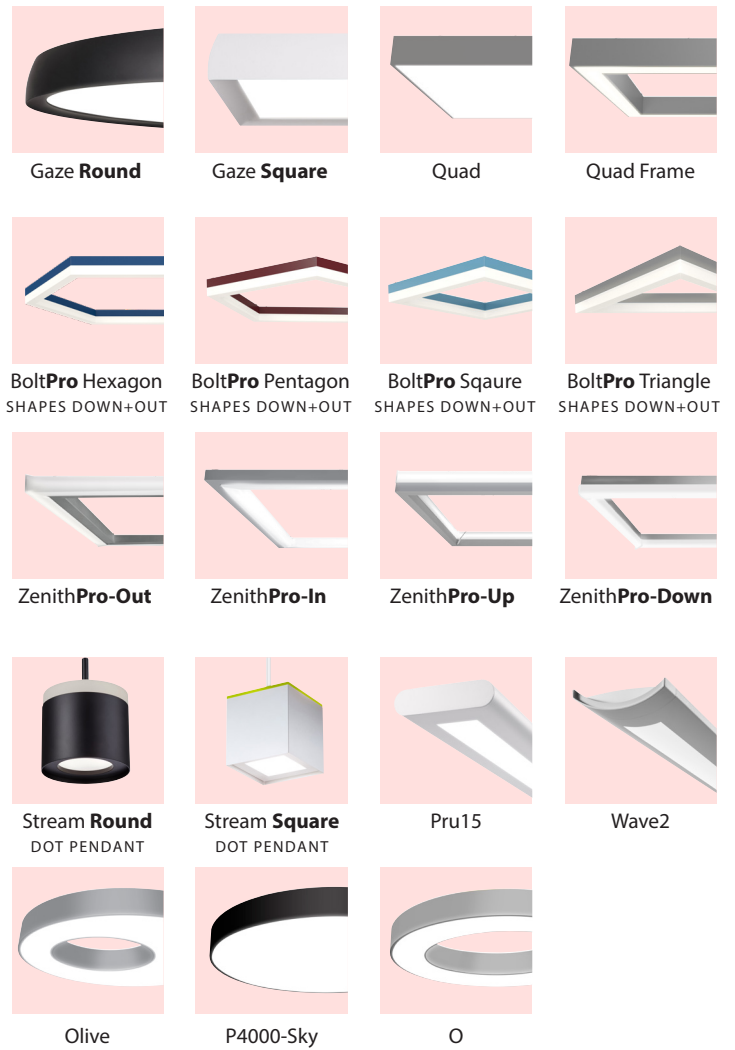


PRUDENTIAL LTG.

Linear Aluminum Luminaires



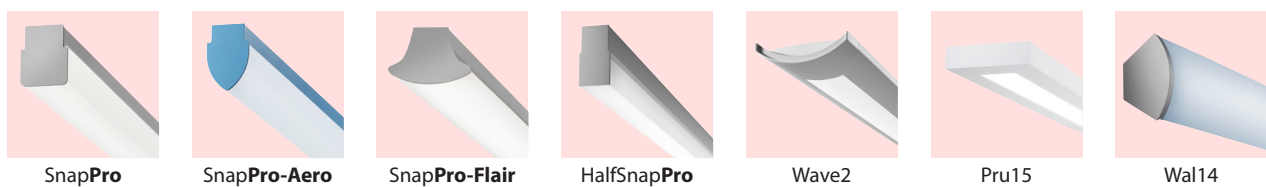
Pendant Aluminum Luminaires




Pendant/Recessed Steel Luminaires





Linear Steel Luminaires



Declare.

USGBC	Rating System	Credit Category	Credit	Prerequisite / Credit	Prulite Declare
	LEED v4.1	Building Product Disclosure & Optimization	Material Ingredient Reporting	Credit, Option 1	YES
	LEED v4.1	Building Product Disclosure & Optimization	Material Ingredient Reporting Third-Party Verified	0.5 Credit, Option 1	YES

LBC	Standard	Petal	Imperative	Optional / Required	Prulite Declare
	LBC v4.0	Material	I-12 Responsible Materials	Required	YES
	LBC v4.0	Material	I-13 Red List	Required	YES
	LBC v4.0	Material	I-14 Responsible Sourcing	Required	YES
	LBC v4.0	Material	I-15 Living Economy Sourcing	Required	YES
	LBC v4.0	Material	I-16 Net Positive Waste	Required	YES

WELL	Version	Concept	Feature	Precondition / Optimixzation	Prulite Declare
	WELL v2	Material	X13 Enhanced Material Precaution	Optimization	YES
	WELL v2	Material	X14 Material Transparency	Optimization	YES



PRUDENTIAL LTG.