

# Gaze Acoustics | Pendant & Surface Round



PRUDENTIAL LTG.

PRULITE.COM 213.746.0360



36" Soft Edge



36" Hard Edge



24" Spool

**Sound absorbing functionality without sacrificing beauty.**

Gone are the days of sound absorbing office carpet and cubicles. Today's trends toward open floor plans, exposed ceilings and hard-surface floors have elevated sound absorption as a key consideration.

Gaze Acoustic fixtures offer effective noise reduction with an intentional approach to design. Alternate with coordinating light fixtures for maximum visual appeal in open spaces.

**DIMENSIONS:**

	SOFT	HARD	SPOOL
<b>18:</b>	19 <sup>7</sup> / <sub>8</sub> "	19"	19 <sup>5</sup> / <sub>8</sub> "
<b>24:</b>	23 <sup>3</sup> / <sub>4</sub> "	22 <sup>13</sup> / <sub>16</sub> "	23 <sup>1</sup> / <sub>2</sub> "
<b>36:</b>	35 <sup>7</sup> / <sub>8</sub> "	34 <sup>7</sup> / <sub>8</sub> "	35 <sup>1</sup> / <sub>2</sub> "
<b>48:</b>	47 <sup>5</sup> / <sub>16</sub> "	48 <sup>3</sup> / <sub>8</sub> "	47"



SERIES	SIZE	FIXTURE COLOR	ACOUSTIC COLOR	MOUNTING	CEILING SYSTEMS
GazeRDSA Round Soft Edge, Acoustic	18	TMW Textured Matte White (Standard)	<b>STANDARD:</b> DB05 White DB03 Marble DB33 Grey	CA48", 96" or 144" Aircraft Cable (Adjustable)	X1 T-Bar X3 Hard Ceiling
GazeRDHA Round Hard Edge, Acoustic	36	YGW Gloss White Y__ Premium Color	<b>PREMIUM: (LONGER LEAD TIMES)</b> DB02 Oat                      DB29 Brown DB27 Teal                     DB30 Earth Brown DB24 Sky Blue              DB32 Stone DB26 Midnight Blue      DB34 Charcoal DB09 Yellow                DB35 Pepper DB16 Orange                DB31 Blue Jean DB10 Red                     DB25 Navy DB28 Hickory                DB11 Berry DB12 Pink                     DB17 Pumpkin DB01 Sand Dollar          DB08 Lemon DB06 Periwinkle            DB19 Pear DB36 Black                    DB21 Green DB20 Lime                    DB22 Heather Green DB23 Honey Dew          DB13 Lilac DB18 Maroon                DB15 Purple DB14 Violet                  DB07 Salmon	RPM 48", 96" or 144" Round Cast Aluminum Canopy	SSC Center Stem (Specify length [Length refers to actual stem length not overall length]; SSC Canopy Round ONLY; NA 12')
GazeRDSPA Round Spool Edge, Acoustic	48	CC Custom Color <b>LUXE METALLICS:</b> YBZ Bronze YCP Copper Penny YGN Gold Nugget <b>NOTE:</b> All canopies are painted the same color as the fixture. Consult factory to specify different canopy color (eg. White)		SPM 48", 96" or 144" Square Cast Aluminum Canopy	

Prudential Ltg. reserves the right to change design specifications or materials without notice. Please visit prulite.com for most current data.  
© 2025 All rights reserved—All products manufactured at: Prudential Ltg. 1774 E. 21<sup>st</sup> Street, Los Angeles, CA 90058

# Gaze Acoustics | Pendant & Surface Round

## FIXTURE COLOR

### STANDARD COLORS:



**TMW**— Textured White (Matte)



**YGW**— White (Gloss)

### LUXE METALLICS:



**YCP**— Copper Penny (Metallic) \*\*



**YGN**— Gold Nugget (Metallic) \*\*



**YBZ**— Bronze (Metallic) \*\*

### PREMIUM COLORS:



**YSW**— Seashell White (Matte) RAL 9010\*



**YRG**— Rain Grey (Gloss) \*\*



**YBK**— Black (Matte) \*\*



**YBB**— Black (Semi-Gloss) RAL 9005\*



**YPE**— Pewter (Matte) \*\*



**YSTM**— Storm Grey (Matte) RAL 7024\*



**YSKM**— Sky (Matte) RAL 5024\*



**YMB**— Military Blue (Matte) \*\*



**YSAM**— Sapphire (Matte) RAL 5005\*



**YIB**— Interstate Blue (Matte) RAL 5009\*



**YBR**— Bronze (Matte) RAL 7013\*



**YFGM**— Forest Green (Matte) RAL 6005\*



**YSRM**— Sunset Red (Matte) RAL 3003\*



**YOR**— Orange (Matte) RAL 2003\*



**YDAM**— Daffodil (Matte) \*\*



**YSL**— Silver (Metallic) \*\*

## CONSTRUCTION

**Housing** Extruded aluminum, rolled and welded, >25% PC recycled, 100% recyclable.

**Acoustics** Acoustic panels made from an acrylic polymer composition.

**Weight** **18:** 5.1lbs **24:** 6.5lbs **36:** 11.8lbs

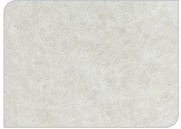
**MOUNTING** Surface or suspended.

**WARRANTY** Single-source, 5 year limited warranty covers standard components and construction.

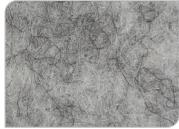


## ACOUSTIC COLORS

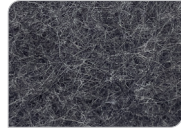
### STANDARD



DB05 White



DB03 Marble

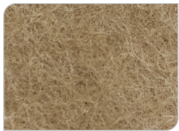


DB33 Grey

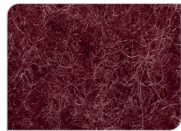
### PREMIUM (LONGER LEAD TIMES)



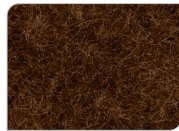
DB01 Sand Dollar



DB02 Oat



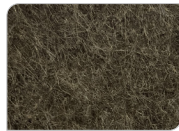
DB18 Maroon



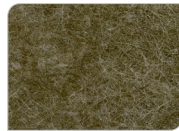
DB28 Hickory



DB29 Brown



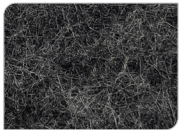
DB30 Earth Brown



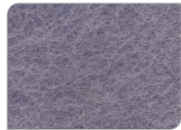
DB32 Stone



DB34 Charcoal



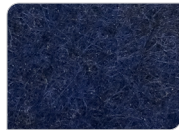
DB35 Pepper



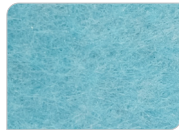
DB06 Periwinkle



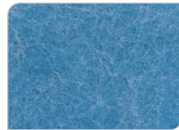
DB31 Blue Jean



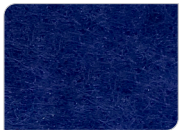
DB26 Midnight Blue



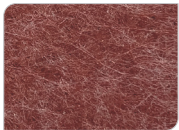
DB27 Teal



DB24 Sky Blue



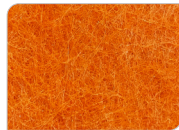
DB25 Navy



DB11 Berry



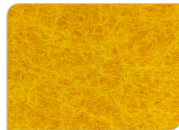
DB10 Red



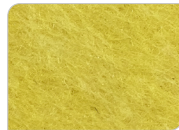
DB16 Orange



DB17 Pumpkin



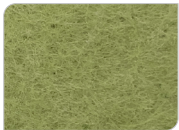
DB09 Yellow



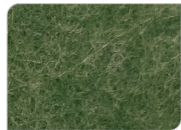
DB08 Lemon



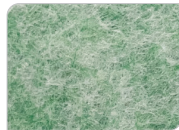
DB20 Lime



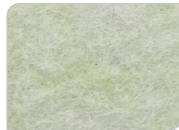
DB19 Pear



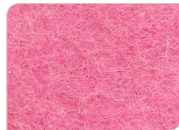
DB21 Green



DB22 Heather Green



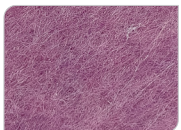
DB23 Honey Dew



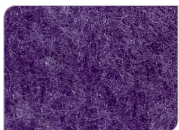
DB12 Pink



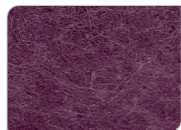
DB07 Salmon



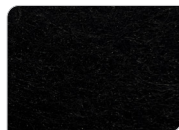
DB13 Lilac



DB14 Violet



DB15 Purple

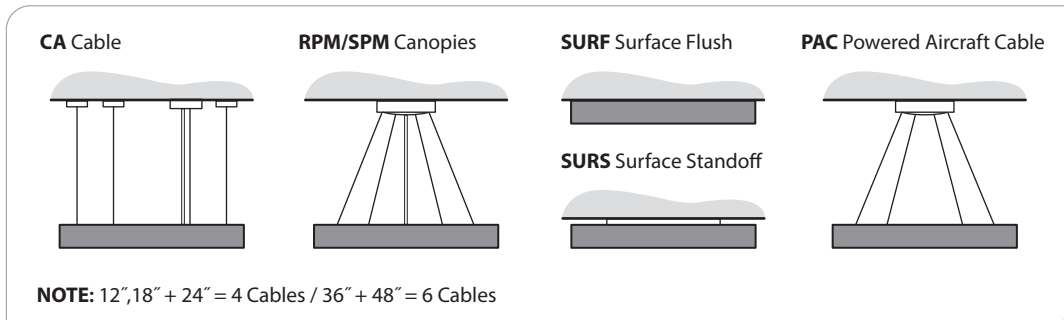


DB36 Black

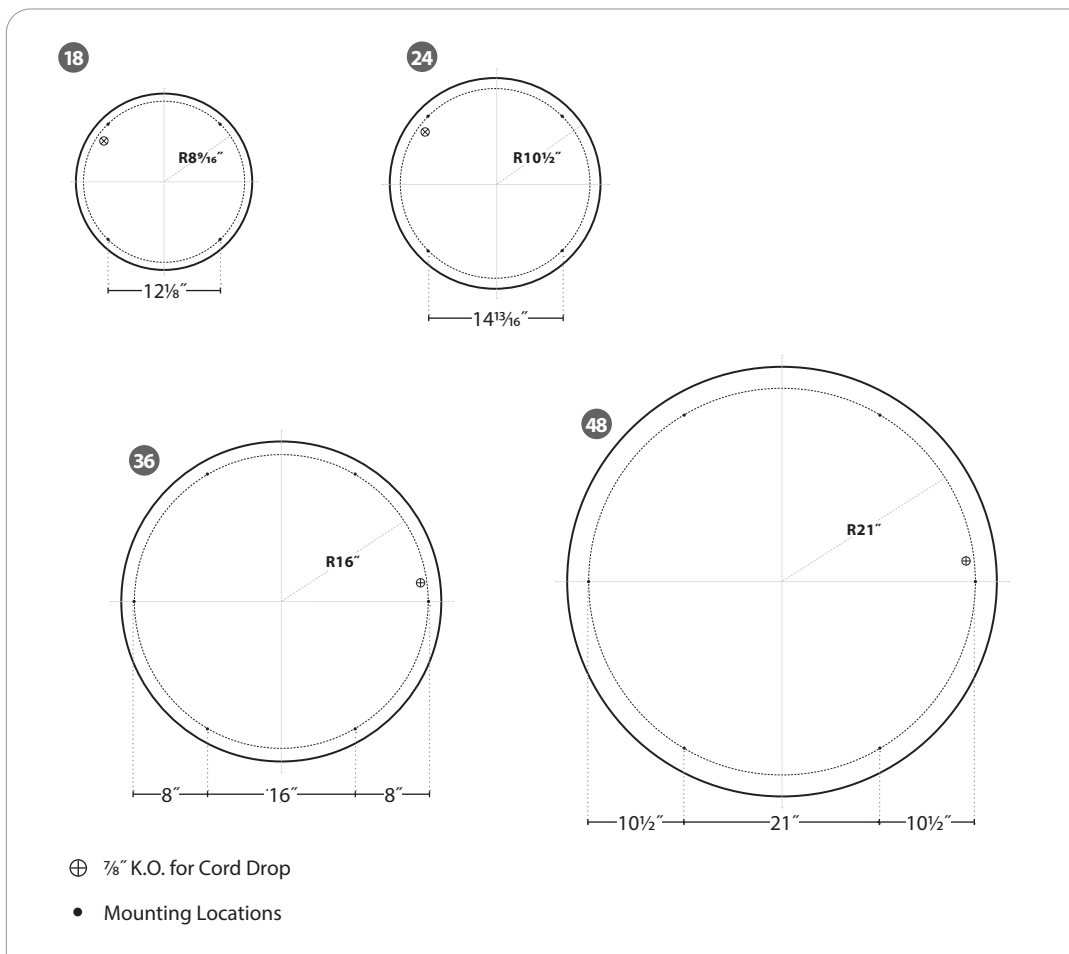
Consult factory for Premium Color acoustic lead times.



## MOUNTING OPTIONS



## CA CABLE MOUNTING DIMENSIONS

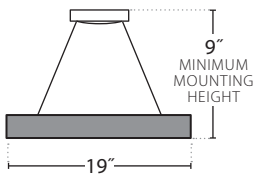




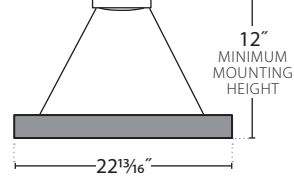
### RPM/SPM CANOPY MINIMUM MOUNTING HEIGHT

#### HARD EDGE

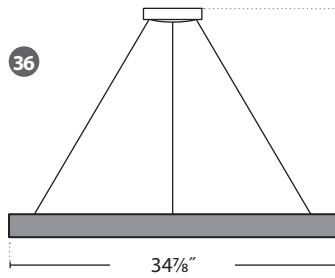
18



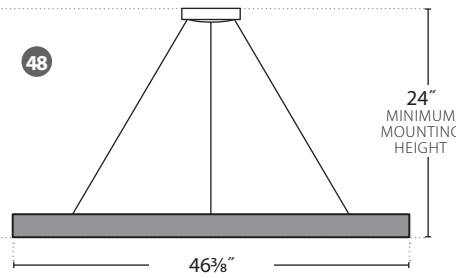
24



36

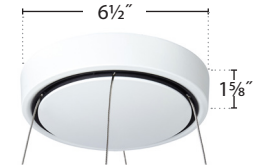


48

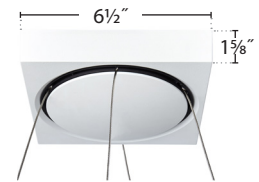


#### CAST ALUMINUM CANOPIES

**RPM48", 96" or 144":**  
Round Cast Aluminum Canopy

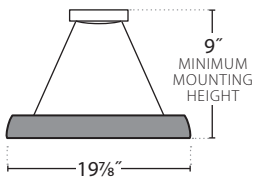


**SPM48", 96" or 144":**  
Square Cast Aluminum Canopy

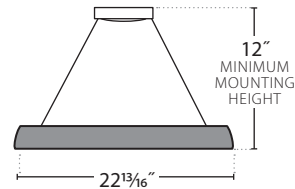


#### SOFT EDGE

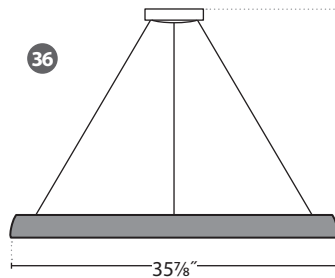
18



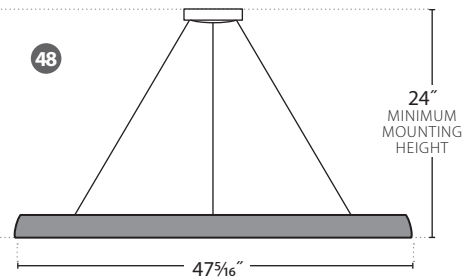
24



36

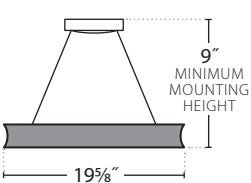


48

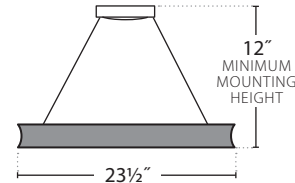


#### SPOOL

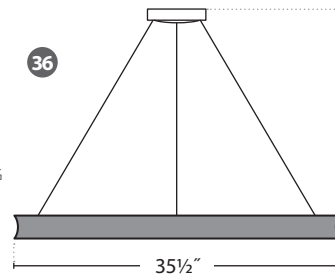
18



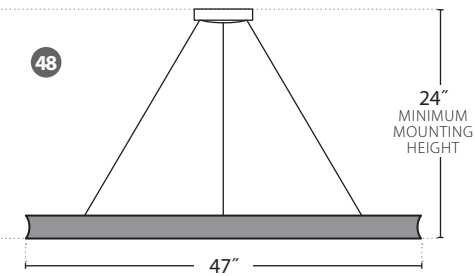
24



36

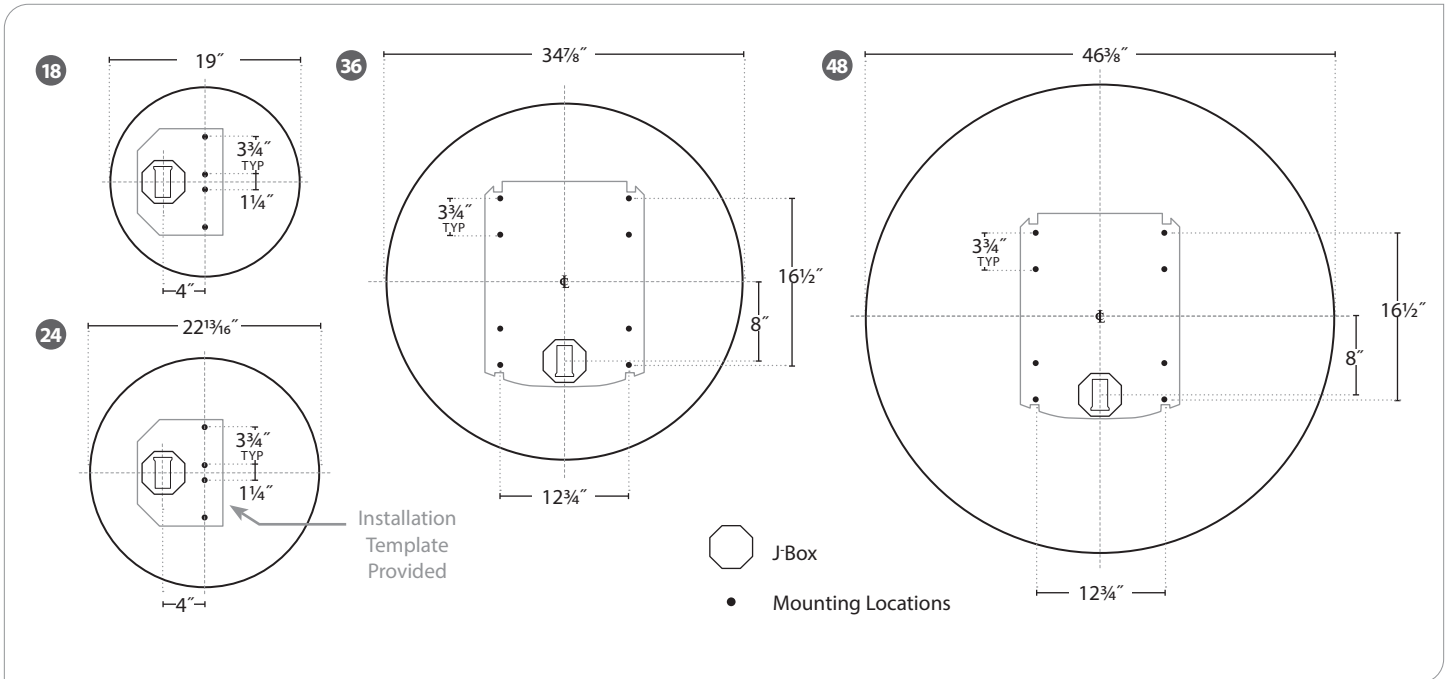


48

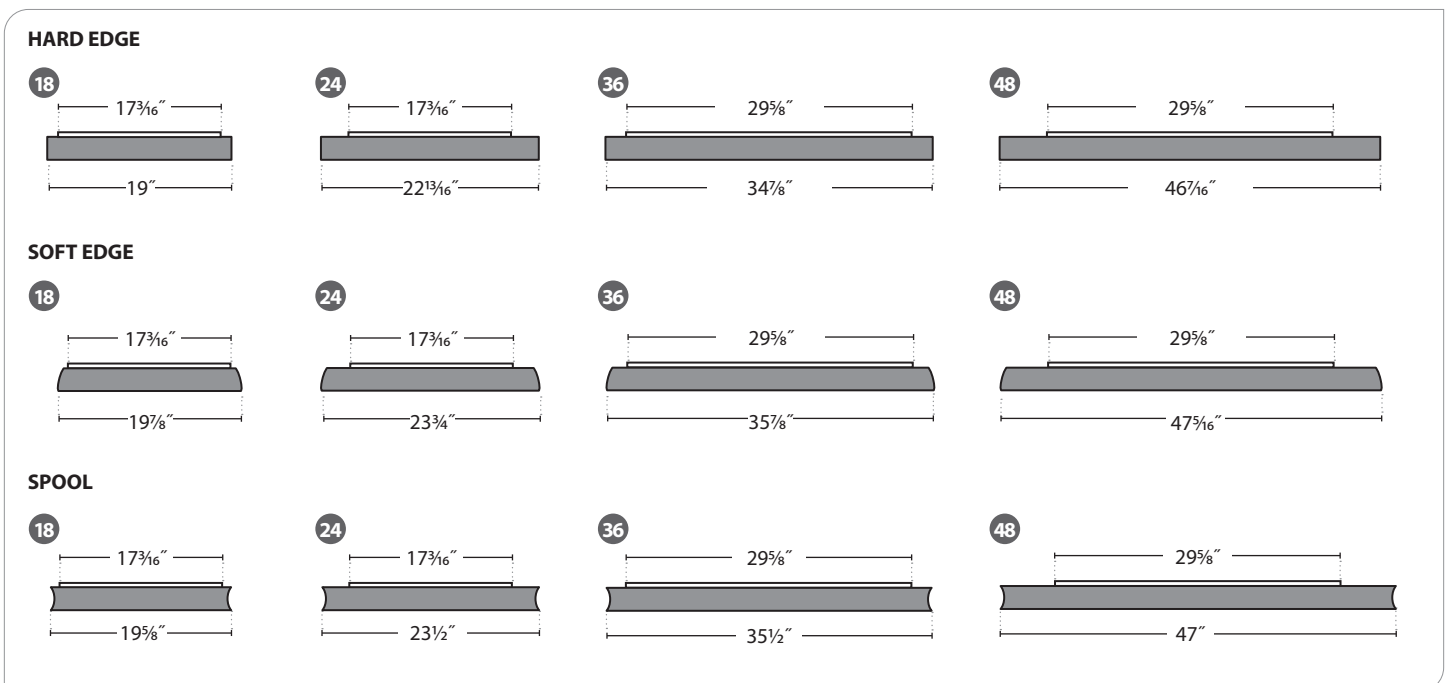




## SURFACE / SURFACE STANDOFF (CEILING OR WALL) MOUNTING DIMENSIONS



## SURFACE STANDOFF DIMENSIONS





## SOUND ABSORPTION

### Why acoustical fixtures?

Open office, open ceilings, hard floors have replaced sound absorbing cubicles, acoustic ceilings and carpet, thus acoustics have declined, enter Gaze Acoustics.

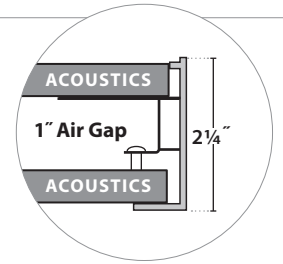
### The benefits of Gaze Acoustics?

- Reduced echoes, background noise
- Improved sound quality
- A more peaceful space
- Enhanced aesthetics

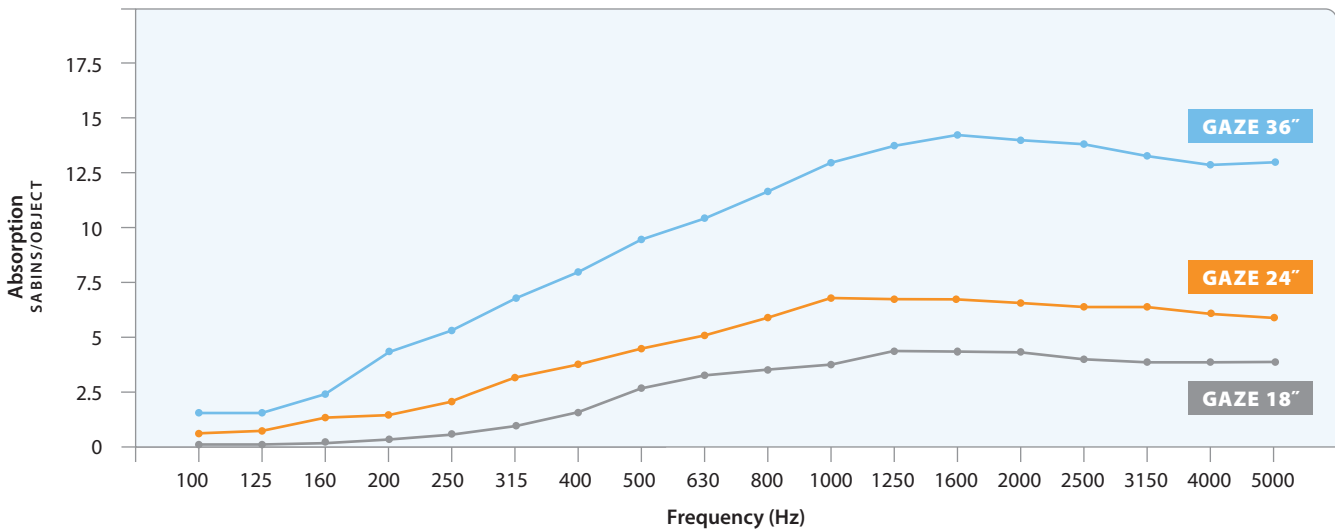
### How can I calculate Gaze Acoustics sound absorption?

Sabins per object is the standard measurement. One Sabins is approximately 1ft<sup>2</sup> of sound absorption. Sound absorption varies at different frequencies.

*For precise acoustics performance of a space, please consult an acoustician.*



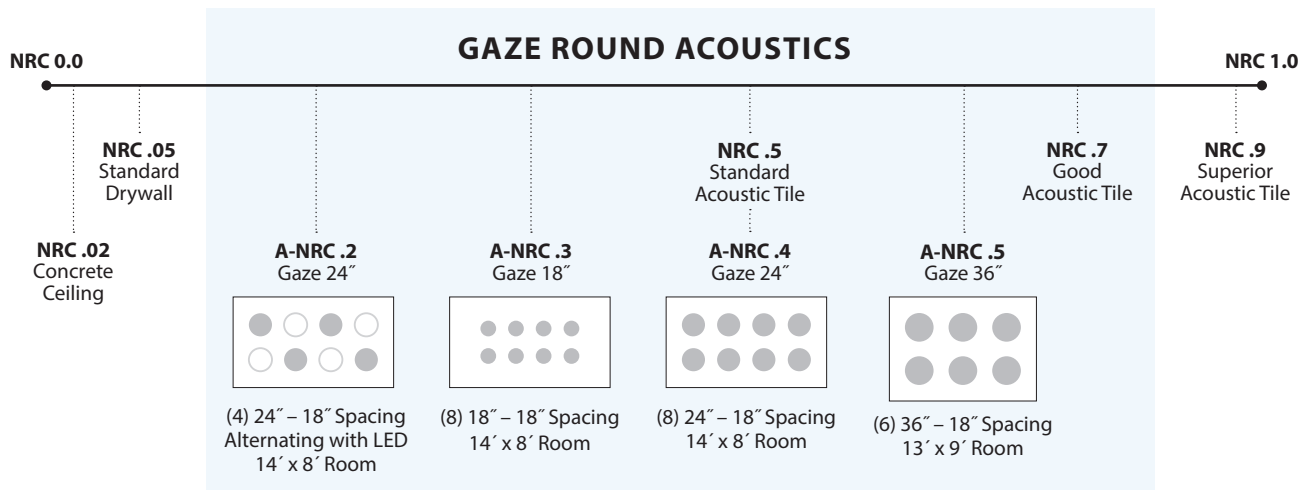
Two layers of acoustic trapping 1" of air for superior sound absorption.



### What is an NRC rating?

Noise Reduction Coefficient (NRC) is a rating for how much sound a surface absorbs according to the test method ASTM C423. Acoustic performance is measured using this rating. NRC is the average Sabins per square foot of surface covered. Apparent NRC (A-NRC) Ratings are calculated from the total Sabins measured for an object array over an area of projected continuous ceiling. This is equivalent to ceiling tile of the same NRC rating over the same installed area.

NRC ratings range from 0 to 1+





## PRULITE ACOUSTICS CALCULATOR

How many Gaze Acoustic fixtures should you choose for your space? There are multiple factors when calculating acoustics, we have done our best to provide a simple guide for those who prefer not to calculate using Sabins per Object or NRC ratings.

**1)** Calculate the square feet of your space (L x W).

**2)** Choose the amount of acoustical improvement you want (sound absorption for reduced reverberation) and find the Acoustic VALUE based on room dimensions.

Estimated % of reduced reverberation time	SIZE	Room dimensions under 300 sq ft			Room dimensions over 300 sq ft		
		GOOD 🟢	BETTER 🟢🟢	BEST 🟢🟢🟢	GOOD 🟢	BETTER 🟢🟢	BEST 🟢🟢🟢
🟢 <b>GOOD</b> 25%	<b>18"</b> Gaze Acoustic	15	10	5	25	15	10
🟢🟢 <b>BETTER</b> 37.5%	<b>24"</b> Gaze Acoustic	20	15	10	35	25	15
🟢🟢🟢 <b>BEST</b> 50%	<b>36"</b> Gaze Acoustic	30	25	20	50	30	20

Calculations based on a 9' ceiling height.  
We suggest mixing lit Gaze luminaires with acoustic.  
Prudential Lighting Acoustic Calculator is a guide.  
For precise acoustic performance, please consult an acoustician.

**3)** Use this Acoustic VALUE Formula to determine the number of luminaires recommended:

### Square feet / Acoustic VALUE = # of luminaires recommended

Example:

20' x 30' = **600** square feet

36" Gaze Acoustics seeking Better (~37.5% reduced reverb), Acoustic VALUE = **30**

**600 / 30 = 20** Gaze Acoustics recommended for the space