

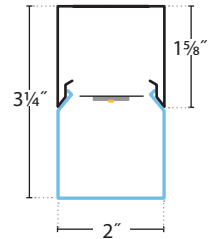


BoltPro Square | Pendant, Surface & Wall



PRUDENTIAL LTG.

PRULITE.COM 213.746.0360



NEW ACOUSTIC OPTIONS

Design + Function. BoltPro shapes + sound absorbing panels.

Bolt Triangle, Square, Pentagon and Hexagon now available with acoustic panels. We are in an era of open ceilings, concrete floors where noise reduction is imperative. Add fixtures with abundant light, vertical illumination and a multitude of shapes and colors for a "two birds (maybe three), one stone" solution.

BSQ-PRO-22-LED35-LO

3953 Delivered Lumens

30 Watts

132 lm/w

UP TO		131 LPW			
		LO	MO	SO	HO
11:	lm	1875	3300	4700	6300
	w	13	23	33	44
22:	lm	3900	6500	8900	11400
	w	30	52	75	100
33:	lm	5900	9800	13400	17000
	w	45	78	112	150
44:	lm	7950	13300	18000	23400
	w	60	104	150	200



Declare.



Lumen output may vary +/- 5%
3500K used for lm/ft estimates above
4000K +2% llf, 3000K -2%, 2700K -4%
-10% LLF for 90 CRI (4K, 3500K and 3K)
See LED Details PDF for more info

SERIES	NOMINAL LENGTH	LED COLOR	OUTPUT	SHIELDING	ACOUSTIC COLORS (OPTIONAL)	COLOR FINISH	VOLTAGE	MOUNTING	CEILING SYSTEMS	DRIVERS	OPTIONS & SENSORS
BSQ-PRO				SAL							
BoltPro Square	NEW 11 1' x 1'	LED27 2700K (90CRI)	LO Low	SAL Satin Acrylic Lens	STANDARD: DB05 White DB03 Marble DB33 Grey	TMW Textured Matte White	UNV (120-277)	CA48", 96" or 144" Aircraft Cable (Adjustable, NA-11)	X1 T-Bar 1 5/8" or 3/4" Exposed (Standard) Consult factory for 3/4" T-Bar	ND Non-Dimming DM01 0-10v, 1% Dimming (Standard)	EMHE* CAT20 Emergency Battery (1350 Delivered lumens, CA Title 20 compliant)
	22 2' x 2'	LED3 3000K	MO Medium				347 (Emergency battery requires a Step Down transformer, NA - 11)	4SPM48", 96" or 144" Square Cast Aluminum Canopy (Min from fixture to ceiling 2': 14", 3': 22", 4': 30")	X3 Hard Ceiling	LDE1 Hi-lume 1% EcoSystem LED (Soft fade on, fade-to-black dimming)	ETS-DR* Iota ETS-DR Emergency Transfer Switch
	33 3' x 3'	LED35 3500K	SO Standard		PREMIUM: (LONGER LEAD TIMES)	YGW Gloss White (Standard)		4RPM48", 96" or 144" Round Cast Aluminum Canopy (Min from fixture to ceiling 2': 14", 3': 22", 4': 30")	X6 Slot Grid or Interlude	ECO 1% 0-10v, EldoLED (Logarithmic dimming std)	ETS-DR* Iota ETS-DR Emergency Transfer Switch
	44 4' x 4'	LED4 4000K	HO High		DB02 Oat	Y Pre-mium Color				ECDA 1% DALI, EldoLED (Logarithmic dimming std)	* NA - 11
		LED3-90 90CRI	PROG Programmable Light Output (Specify desired lm/ft or w/ft)		DB27 Teal	CC Custom Color				nLight-Air includes rLO (ECDA driver ONLY)	
		LED35-90 90CRI			DB24 Sky Blue					nLight-Wired Acuity nLight Drivers (ECO driver ONLY)	
		LED4-90 90CRI			DB26 Midnight Blue					SOLO* 0.1% 0-10v, EldoLED (Dim-to-dark, Logarithmic dimming std)	
		LED5-90 90CRI			DB09 Yellow					SODA* 0.1% DALI, EldoLED (Dim-to-dark, Logarithmic dimming std)	
					DB16 Orange					STEP Signify Advance Step Dimming	
					DB28 Hickory					2WIRE ELV/Forward/Reverse Phase Driver	
<p>† NA-11</p> <p>SENSORS: (See Page 8) SENSORS NA - 11 205 WattStopper PIR Occupancy 205-ON/OFF 205-STEP: Dim to 50% 205-DM: Dim to 1% ATHENA Lutron RF ENL Enlighted SU-5E-IOT LVOC** Lutron Vive (Occ & RF) LVRF** Lutron Vive (RF Only) ** Requires Lutron driver NXSMP Hubbell (Occ) nLT-AIR-ADCX Daylight+(PIR Acoustic) Occ nLT-WIRED-ADCX Daylight+(PIR Acoustic) Occ</p>											



BoltPro Square | Pendant, Surface & Wall



PRUDENTIAL LTG.

PRULITE.COM 213.746.0360

PHOTOMETRICS

Low Output:

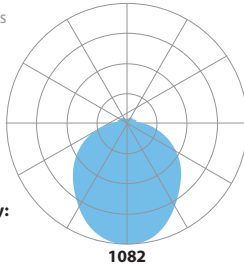
BSQ-PRO-22-LED35-LO

3953 Delivered Lumens

30 Watts

132 lm/w

3500 CCT



Zonal Lumen Summary:

0-90 (Down) = 89%

90-180 (Up) = 11%

1082

Vertical Angle	0°	45°	90°	135°	180°
0°	1082	1082	1082	1082	1082
5°	1069	1074	1069	1076	1069
15°	1031	1041	1028	1043	1023
25°	942	959	938	956	934
35°	828	851	826	848	831
45°	707	733	715	731	709
55°	586	614	597	615	592
65°	462	490	472	492	469
75°	327	359	336	362	333
85°	200	220	206	219	203
90°	99	119	100	117	94
95°	86	112	94	113	95
105°	79	100	81	104	81
115°	63	83	63	84	61
125°	49	71	47	72	42
135°	43	56	39	55	35
145°	35	43	30	43	28
155°	30	31	30	31	28
165°	18	18	18	18	17
175°	10	8	8	7	8
180°	0	0	0	0	0

LUMEN MAINTENANCE

L70 — 200,000+ Hours

L90 — 100,000+ Hours (LO, MO & SO)

L90 — 60,000+ Hours (HO)

LED SYSTEM

LED modules and drivers are field replaceable.

PROG

(OPTIONAL)

Programmable light output. Specify desired lumens or watts per linear foot. Min: 3.75 w/ft, Max 12.5 w/ft.

BINNING

Standard binning (all Prudential LED boards) includes testing at the chip level and board integration to provide consistent color temperature within a 3-step MacAdam ellipse, with +/- 5% lumen output range and +/- .004 Duv.

LABELS

CSA and ETL damp labeled and I.B.E.W. manufactured.

ELECTRICAL

Must specify LED dimming controls. LED fixtures have constant current driver(s) with less than 20% THD when loaded to a minimum of 60%. Drivers sink a maximum of 6mA per driver. DM01 LED drivers are 0-10V dimmable and are compatible with most 0-10V wall slide dimmers and direct 0-10V analog signal dimmers. Max driver size 1.65" w x 1.25" h. 32v Forward Voltage (+/- 1 volt based on drive current)

Drive Currents:

LO: 100mA, **MO:** 100mA, **SO:** 250mA, **HO:** 325mA

CONSTRUCTION

Housing

Extruded aluminum, 25% PC recycled, 100% recyclable.

Lens

Extruded acrylic, 100% recyclable.

Weight

11: 6 lbs

22: 16 lbs

33: 24 lbs

44: 32 lbs

MOUNTING

Fixture is to be suspended with aircraft cables or surface mounted.

WARRANTY

Single-source, 5 year limited warranty covers standard components and construction.



BoltPro Square | Pendant, Surface & Wall



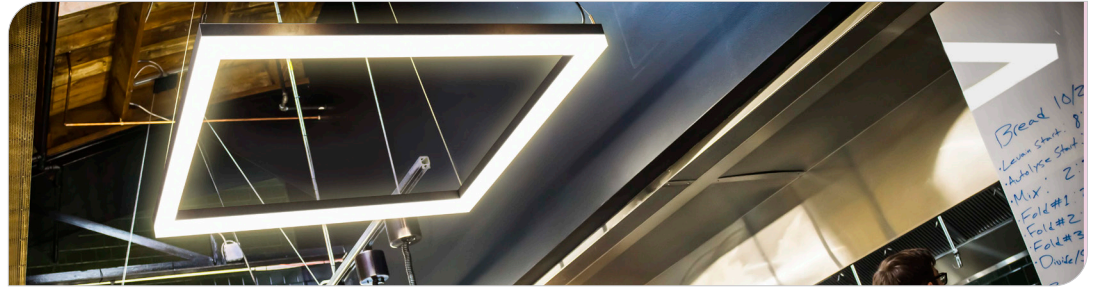
PRUDENTIAL LTG.

PRULITE.COM 213.746.0360

YSW – Seashell White (Matte)	YCH – Champagne (Metallic)
YSL – Silver (Metallic)	YPE – Pewter (Matte)
YRG – Rain Grey (Gloss)	YSTM – Storm Grey (Matte)
YBK – Black (Matte)	YBB – Black (Semi Gloss)
YSKM – Sky (Matte)	YMB – Military Blue (Matte)
YIB – Interstate Blue (Matte)	YSAM – Sapphire (Matte)
YFGM – Forest Green (Matte)	YBR – Bronze (Matte)
YBY – Boysenberry (Matte)	YSRM – Sunset Red (Matte)
YOR – Orange (Matte)	YDAM – Daffodil (Matte)

Choose from one of our Premium Colors with no set-up fee.

For paint chip samples, please email: info@prulite.com



SENSOR BOX

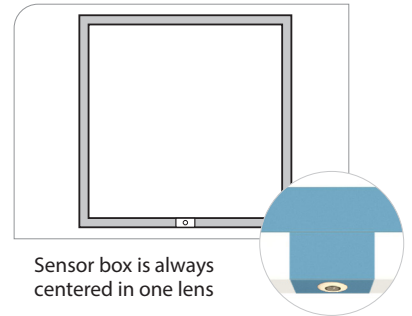


NA - 11.



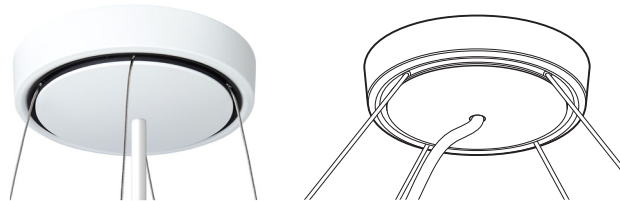
NOTE: Sensor plate will match fixture color

SENSOR MOUNTING LOCATION

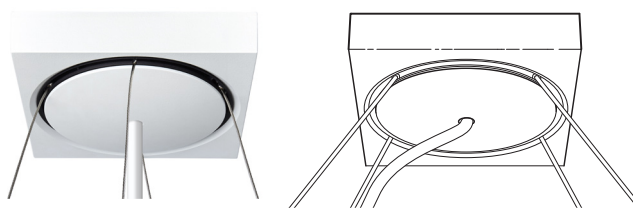


Sensor box is always centered in one lens

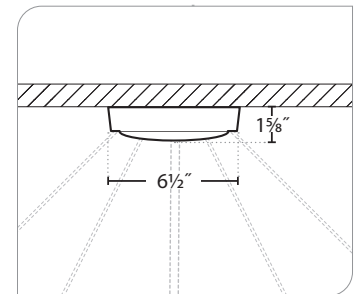
4RPM48", 96" or 144": Round Cast Aluminum Canopy
4SPM: 1', 2', 3', 4' (4 Cables)



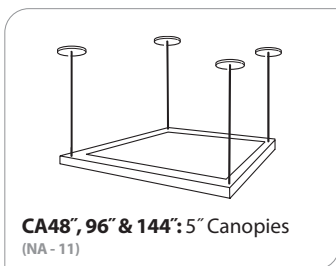
4RPM48", 96" or 144": Square Cast Aluminum Canopy
4SPM: 1', 2', 3', 4' (4 Cables)



NOTE: Canopies cannot mount directly to t-bar grids



MOUNTING



CA48", 96" & 144": 5" Canopies
(NA - 11)

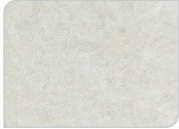
MOUNTING DIMENSIONS

1"	2"	3"	4"
<p>• Cable & Surface Mounting</p>			

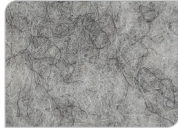


ACOUSTIC COLORS

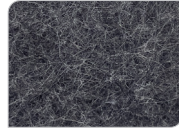
STANDARD



DB05 White



DB03 Marble

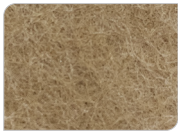


DB33 Grey

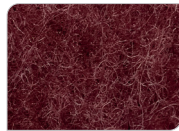
PREMIUM (LONGER LEAD TIMES)



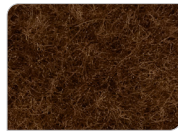
DB01 Sand Dollar



DB02 Oat



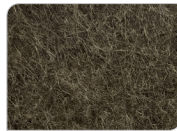
DB18 Maroon



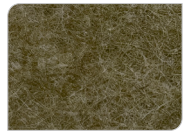
DB28 Hickory



DB29 Brown



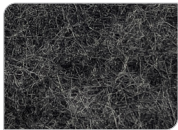
DB30 Earth Brown



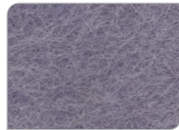
DB32 Stone



DB34 Charcoal



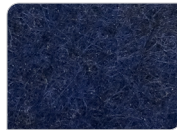
DB35 Pepper



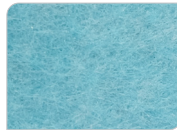
DB06 Periwinkle



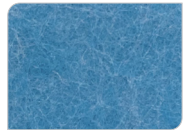
DB31 Blue Jean



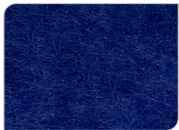
DB26 Midnight Blue



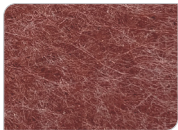
DB27 Teal



DB24 Sky Blue



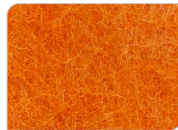
DB25 Navy



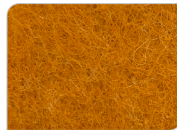
DB11 Berry



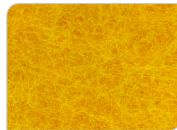
DB10 Red



DB16 Orange



DB17 Pumpkin



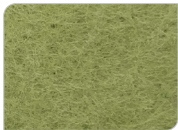
DB09 Yellow



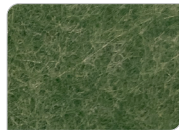
DB08 Lemon



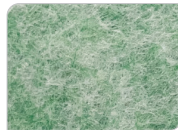
DB20 Lime



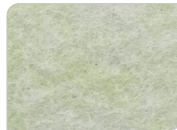
DB19 Pear



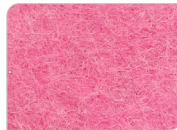
DB21 Green



DB22 Heather Green



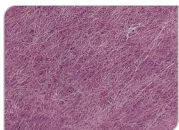
DB23 Honey Dew



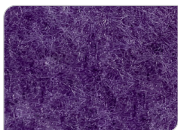
DB12 Pink



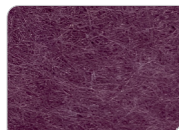
DB07 Salmon



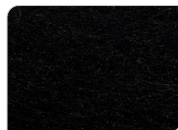
DB13 Lilac



DB14 Violet



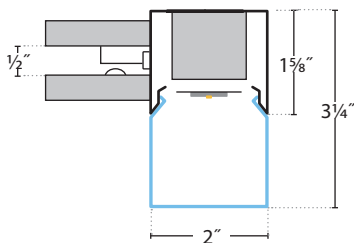
DB15 Purple



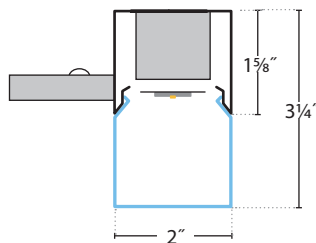
DB36 Black

Consult factory for Premium Color acoustic lead times.

CROSS SECTION



Two layers of acoustic with 1/2" air gap for better sound absorption



One layer acoustic for Surface Mounted



BoltPro Square | Pendant, Surface & Wall



PRUDENTIAL LTG.

PRULITE.COM 213.746.0360

SOUND ABSORPTION

Why acoustical fixtures?

Open office, open ceilings, hard floors have replaced sound absorbing cubicles, acoustic ceilings and carpet, thus acoustics have declined, enter Acoustics.

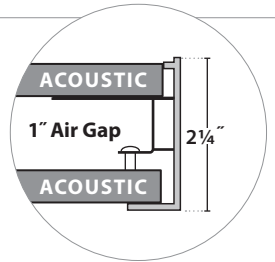
The benefits of Acoustics?

- Reduced echoes, background noise
- Improved sound quality
- A more peaceful space
- Enhanced aesthetics

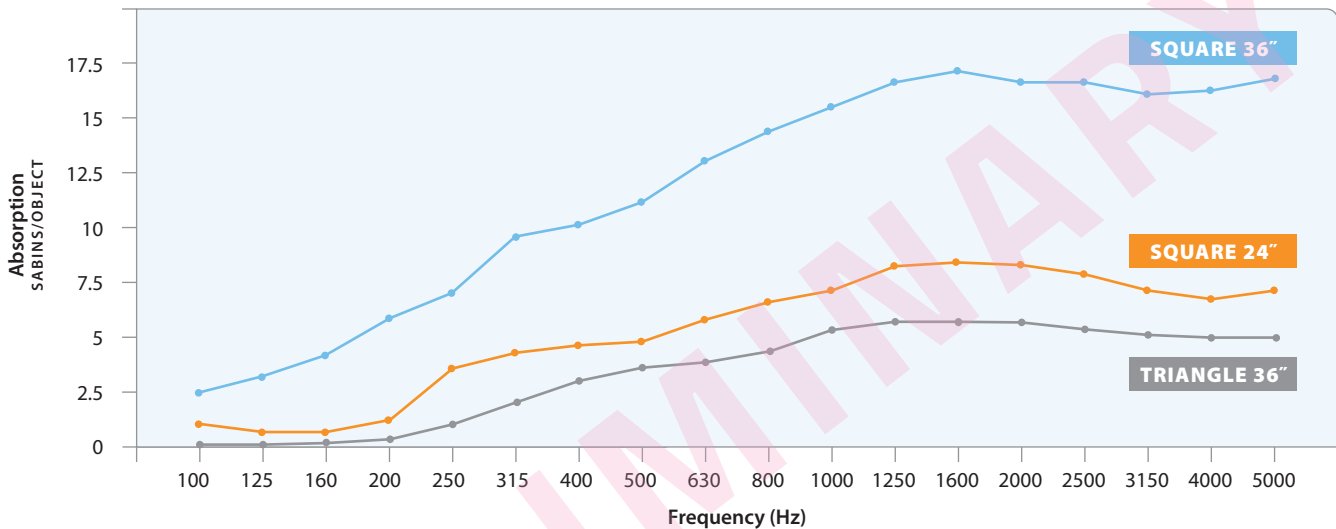
How can I calculate Acoustic sound absorption?

Sabins per object is the standard measurement. One Sabins is approximately 1ft² of sound absorption. Sound absorption varies at different frequencies.

For precise acoustic performance of a space, please consult an acoustician.



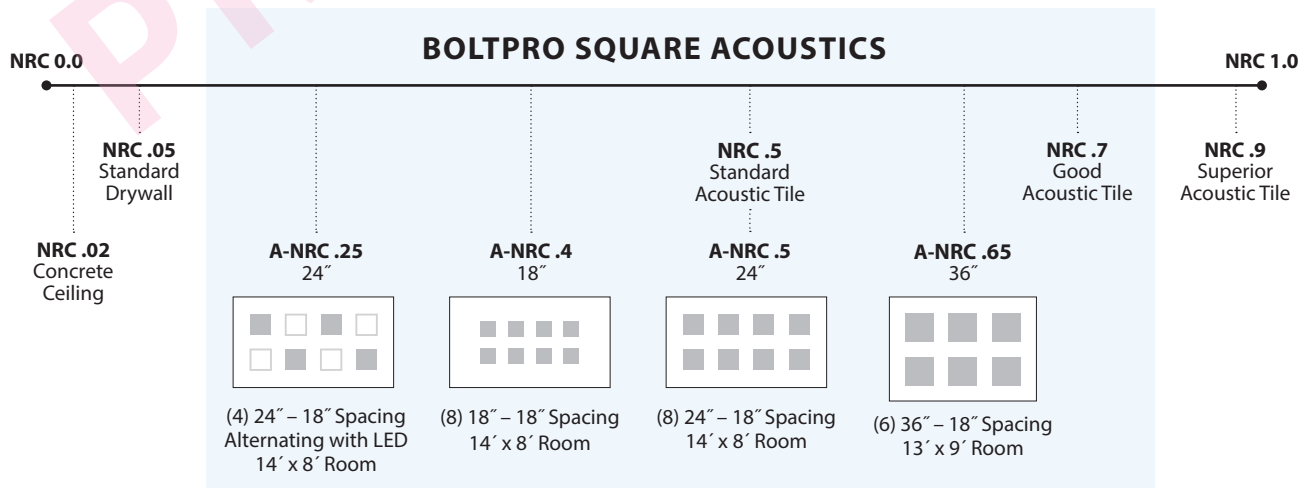
Two layers of acoustic trapping 1" of air for superior sound absorption



What is an NRC rating?

Noise Reduction Coefficient (NRC) is a rating for how much sound a surface absorbs according to the test method ASTM C423. Acoustic performance is measured using this rating. NRC is the average Sabins per square foot of surface covered. Apparent NRC (A-NRC) Ratings are calculated from the total Sabins measured for an object array over an area of projected continuous ceiling. This is equivalent to ceiling tile of the same NRC rating over the same installed area.

NRC ratings range from 0 to 1+





PRULITE ACOUSTIC CALCULATOR

How many Acoustic fixtures should you choose for your space? There are multiple factors when calculating acoustics, we have done our best to provide a simple guide for those who prefer not to calculate using Sabins per Object or NRC ratings.

1) Calculate the square feet of your space (L x W).

2) Choose the amount of acoustical improvement you want (sound absorption for reduced reverberation) and find the Acoustic VALUE based on room dimensions.

Estimated % of reduced reverberation time	SIZE	Room dimensions under 300 sq ft			Room dimensions over 300 sq ft		
		GOOD ✓	BETTER ✓✓	BEST ✓✓✓	GOOD ✓	BETTER ✓✓	BEST ✓✓✓
✓ GOOD 25%	36" Triangle Acoustic	20	15	10	30	20	15
✓✓ BETTER 37.5%	24" Square Acoustic	30	20	15	40	30	20
✓✓✓ BEST 50%	36" Square Acoustic	40	30	25	60	40	30

Calculations based on a 9' ceiling height.
Prudential Lighting Acoustic Calculator is a guide.
For precise acoustic performance, please consult an acoustician.

3) Use this Acoustic VALUE Formula to determine the number of luminaires recommended:

Square feet / Acoustic VALUE = # of luminaires recommended

Example:

20' x 30' = **600** square feet

36" BoltPro Square Acoustics seeking Better (~37.5% reduced reverb), Acoustic VALUE = **40**

600 / 40 = 15 BoltPro Square Acoustics recommended for the space

NOTE: We are testing BoltPro Acoustical fixtures. this data is from our Gaze Square Acoustical fixtures which should be comparable.



BoltPro Square | Pendant, Surface & Wall



PRUDENTIAL LTG.

PRULITE.COM 213.746.0360






LM79 & TM30 DATA:

	MEASURED CCT	MEASURED LUMENS	CRI	R9	DuV	SPD	TM30 — COLOR VECTOR	TM30 — COLOR DISTORTION
LED27	2680	80%	93	58	0.001			
						400 600 800	89 Rf	97 Rg
LED3	3042	95%	82	6	0.001			
						400 600 800	81 Rf	92 Rg
LED3-90	3016	85%	93	61	0.000			
						400 600 800	88 Rf	96 Rg
LED35	3482	100%	82	3	0.002			
						400 600 800	81 Rf	92 Rg
LED35-90	3417	85%	93	67	0.000			
						400 600 800	88 Rf	96 Rg
LED4	3952	102%	82	4	0.003			
						400 600 800	81 Rf	92 Rg
LED4-90	3882	85%	92	67	0.003			
						400 600 800	87 Rf	96 Rg
LED5-90	4889	85%	94	84	0.002			
						400 600 800	86 Rf	95 Rg



SENSORS

SENSORS NA - 11

				
205: Wattstopper	ENL: Enlighted Occupancy / Daylight	LVOC: Lutron Occupancy /Daylight Sensor	LVRF: Lutron Vive Control Node	NXSMP: Hubbell Occupancy /Daylight Sensor
Low voltage PIR fixture integrated occupancy sensor.	Enlighted Network Integrated/embedded networked lighting control, luminaire-level lighting control, LLLC. When configured as an IoT Node, the sensor streams comprehensive live data for use with Enlighted's real-time location and analytics software applications. This option is available directly from the factory or as a remote upgrade. Wireless Internet.	Measures light in the space (daylighting) while detecting people moving within an area using passive infrared to determine occupancy. Controls the lights to balance the light level in the space, combining convenience, exceptional energy savings, and ease of installation.	Provides wireless control of the fixture when neither occupancy nor daylight sensing is needed.	Hubbell Integrated/embedded networked lighting control, luminaire-level lighting control, LLLC. PIR motion sensor for automatic On/Off control. Integrated daylight sensor for daylight harvesting and/or lumen maintenance. Bluetooth radio provides wireless control of luminaire. Simple plug-in connection to NX Fixture Modules. Wireless Internet.
				
ATHENA	NLT-AIR-rIO: Daylight+Occ	NLT-AIR-ADCX: Daylight+(PIR Acoustic) Occ	NLT-WIRED-nIO: Daylight+Occ	NLT-WIRED-ADCX: Daylight+(PIR Acoustic) Occ
The Athena wireless node is a radio frequency (RF) device that enables simple, digital control of individual light fixtures in an Athena control system. The small size and compatibility with a wide variety of drivers allow for seamless integration with common commercial lighting fixtures from any manufacturer. Requires drivers with auxiliary power, consult factory for lead times	The rIO is a fixture embedded low voltage wireless nLight AIR device capable of individual fixture control and analog or digital dimming. This smart device results in the luminaire being "nLight AIR-enabled" —making it an addressable nLight AIR device. It uses a 900MHz radio to communicate with other nLight AIR devices, such as occupancy sensors, photocells, wall switches, powerpacks and other nLight AIR-enabled luminaires. This allows for advanced operation and design flexibility ranging from stand-alone rooms to building and campus-wide networks.	The nLight® AIR rES7 sensor is an in-fixture, low voltage, digital sensor providing embedded wireless lighting control, analog or digital dimming, occupancy detection and daylight harvesting capabilities. The rES7 is designed for mounting heights up to 20 ft in indoor luminaires. The rES7 sensor provides Passive Infrared (PIR) occupancy detection over a 15-20 ft (4.57 - 6.10 m) radial coverage pattern and photocell light level detection in one compact low profile design with optional Dual Technology, which adds Microphonics™ to PIR detection. The rES7 sensor is ideal for occupancy and daylighting control in suspended or recessed luminaires.	nLight digital nIO modules are low voltage control devices that enable digital control of LEDcode enabled eldoLED LED drivers. Through eldoLED's bi-directional 2-wire interface, these modules deliver natural, flicker-free high performance dimming while eliminating common issues related to 0-10 VDC alternatives. The modules also enable the eldoLED LED Drivers to be addressable, as well as capable of digitally communicating with other nLight controls such as occupancy sensors, photocells, and WallPods. This allows for advanced operation and design flexibility ranging from stand-alone rooms to building and campus-wide networks.	The nES 7 is a small passive infrared occupancy sensor designed to be easily embedded into luminaires. This sensor provides excellent line of sight 360° PIR detection of small motion and walking motion. The nES 7 is ideal for small rooms without obstructions or areas with primarily walking motion (e.g. corridors, library stacks). Additionally, an optional integrated photocell enables daylight harvesting control as well. Typically one or more nES 7 sensors are paired with an nLight controller within an nLight enabled luminaire. For rooms like classrooms and private offices or any space with obstructions, the nES PDT 7 dual technology sensor is recommended.