



# PruCove™ Remote | Cove & Perimeter

PRU Trim Extrusions

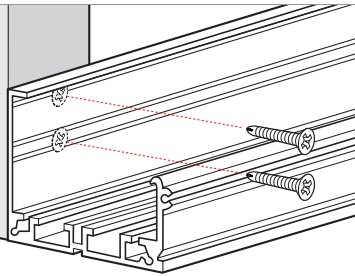
## INSTALLATION INSTRUCTIONS



PRUDENTIAL LTG.

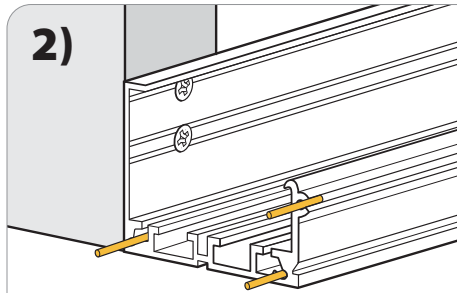
PRULITE.COM 213.746.0360

1)

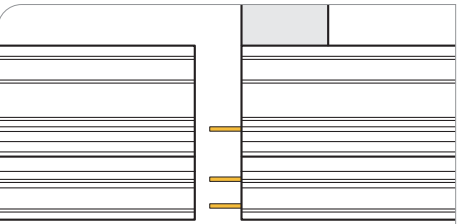


Mount trim with 1" or longer tek screws (by others) directly into studs.

2)



Insert aligning pins  $\frac{3}{4}$  in.



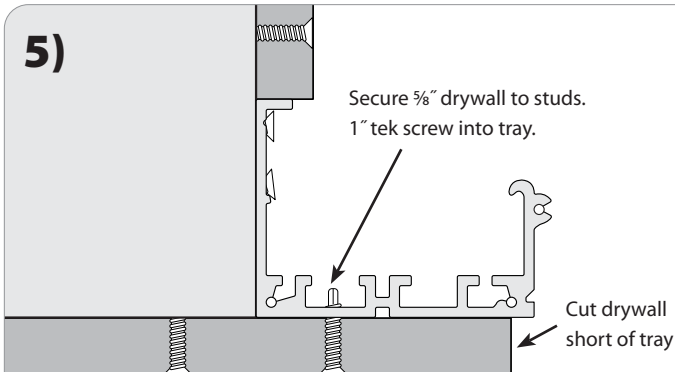
3) Slide next tray into aligning pins and secure to studs with tek screws.

**WARNING:** Aligning pins **WILL NOT** support tray.

4)

Repeat steps 1 & 2 until all trays are secured to studs.

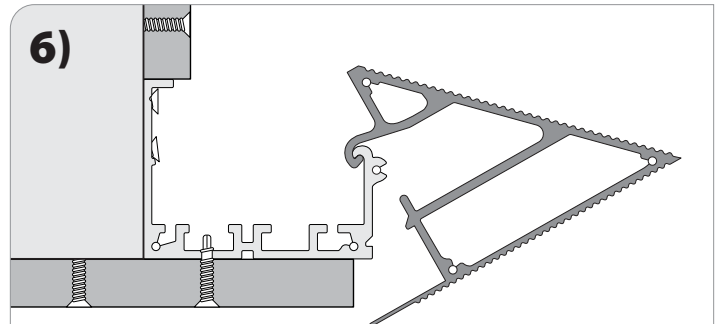
5)



Secure  $\frac{5}{8}$ " drywall to studs.  
1" tek screw into tray.

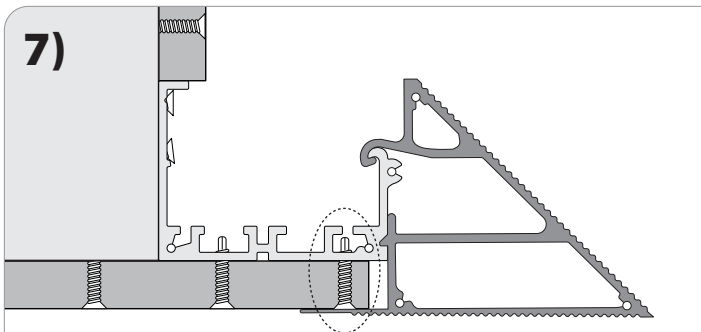
Cut drywall  
short of tray

6)



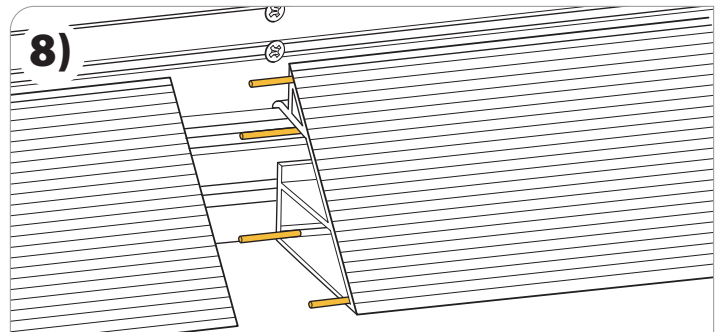
Add trim by angling onto hook and rotating down until secure and level.

7)



Secure trim in predrilled holes with 1" tek screws.

8)



Insert aligning pins and slide next trim into place.

9)

Repeat steps 7 & 8 until all trims secured.

10)

Mud both faces of trim with drywall.

**WARNING:** Ground fixture in according with local and national electrical codes. Failure to do so may result in serious personal injury.



Prudential Ltg. reserves the right to change design specifications or materials without notice. Please visit [prulite.com](http://prulite.com) for most current data.  
© 2015 All rights reserved - All products manufactured at: Prudential Ltg. 1774 E. 21st Street, Los Angeles, CA 90058