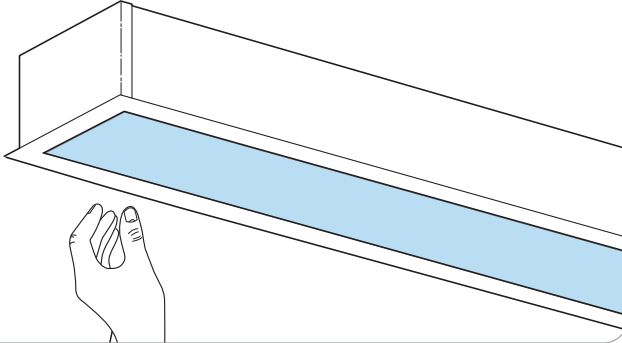




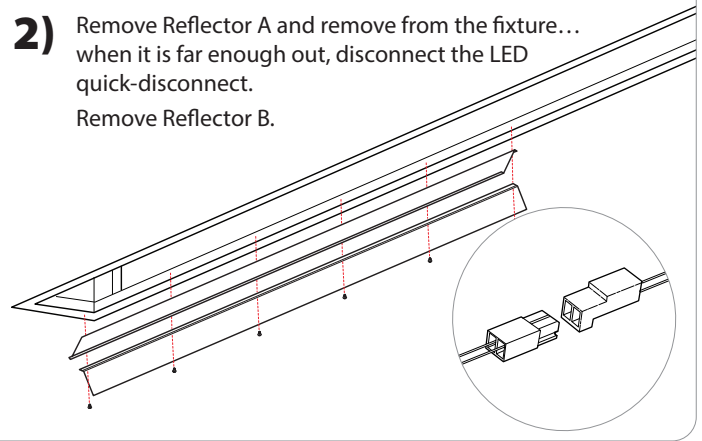
DRIVER REPLACEMENT

! TURN OFF POWER

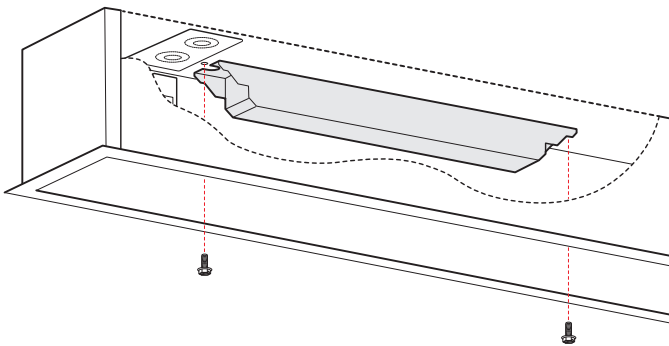
- 1)** Remove the lens material by pushing it into the fixture section on one side (long edge) over the length of the fixture section.



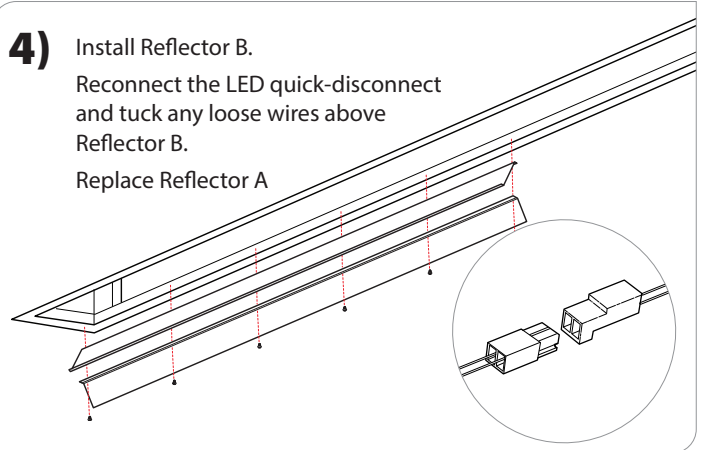
- 2)** Remove Reflector A and remove from the fixture... when it is far enough out, disconnect the LED quick-disconnect. Remove Reflector B.



- 3)** Remove and replace the defective driver making note of all of the electrical connections.



- 4)** Install Reflector B. Reconnect the LED quick-disconnect and tuck any loose wires above Reflector B. Replace Reflector A



- 5)** Replace Lens
See page 3.

WARNING: Ground fixture in accordance with local and national electrical codes. Failure to do so may result in serious personal injury. Fixture Installations should ONLY be done by a qualified licensed electrical professional.

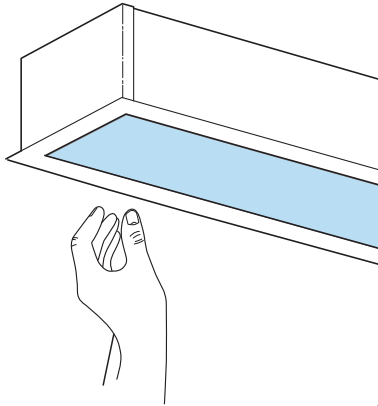


MAINTENANCE INSTRUCTIONS

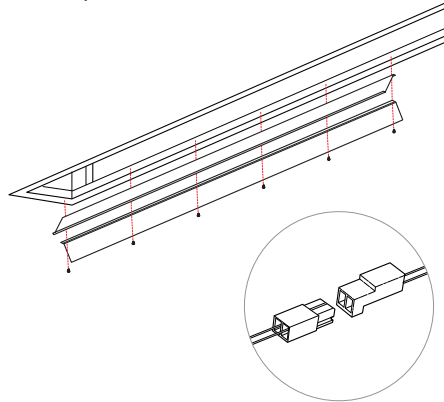
LED REPLACEMENT

⚠️ TURN OFF POWER

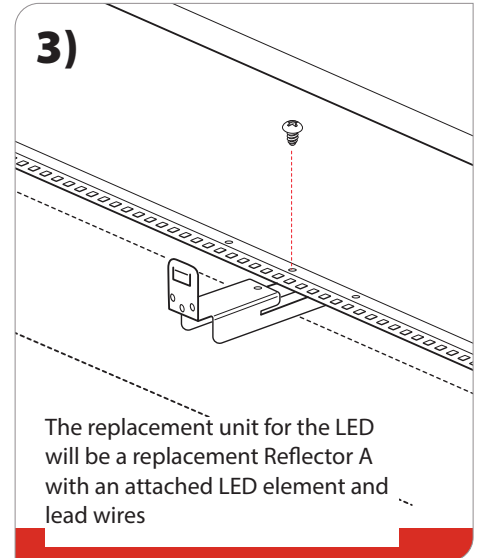
- 1)** Remove the lens material by pushing it into the fixture on one side (long edge) over the length of the fixture



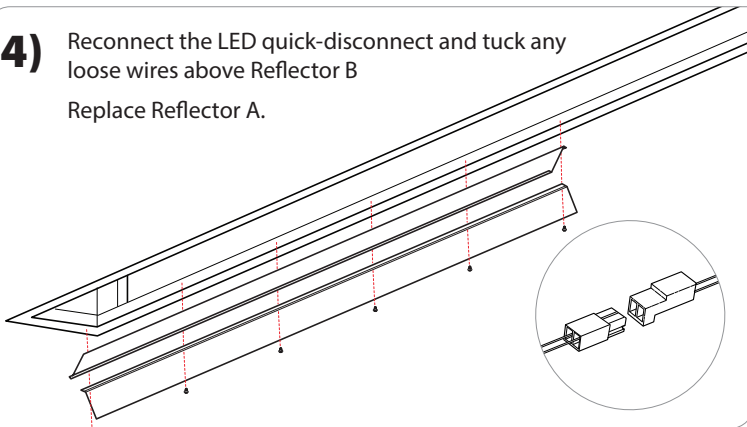
- 2)** Remove Reflector A and remove from the fixture, when it is far enough out, disconnect the LED quick-disconnect



- 3)**



- 4)** Reconnect the LED quick-disconnect and tuck any loose wires above Reflector B
Replace Reflector A.



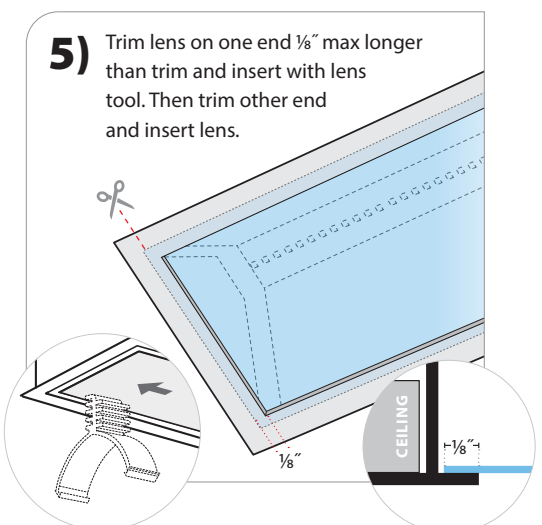
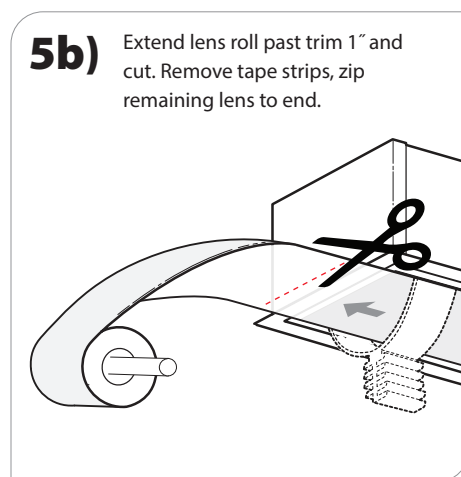
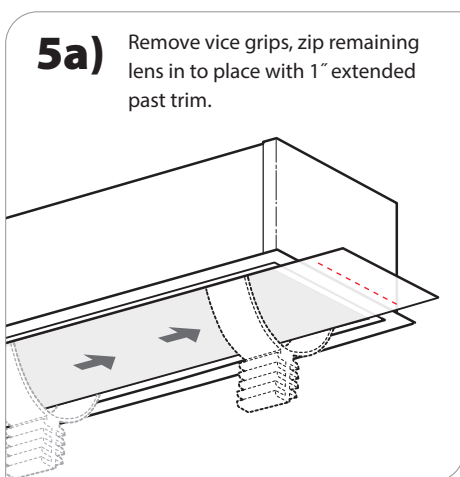
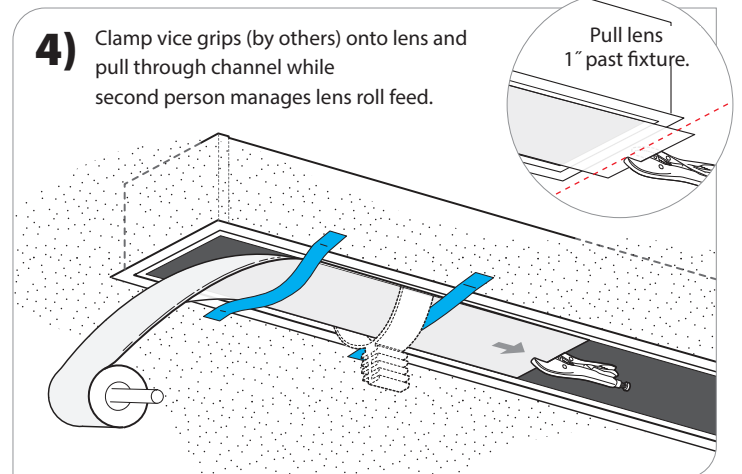
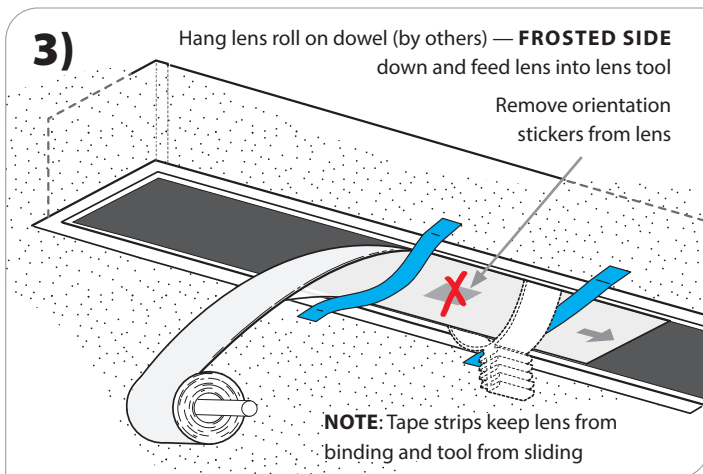
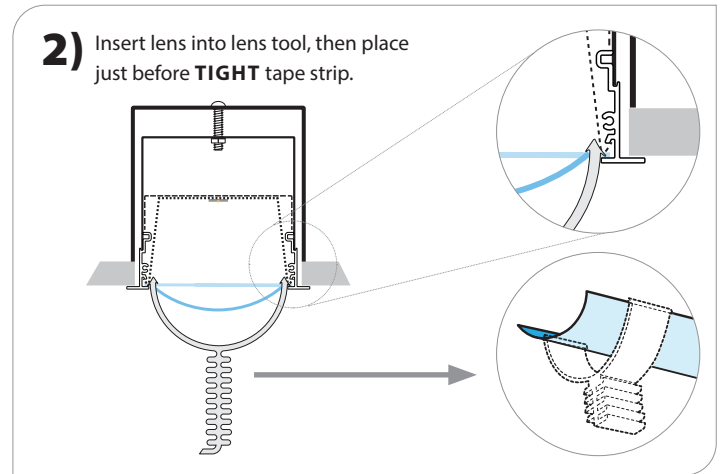
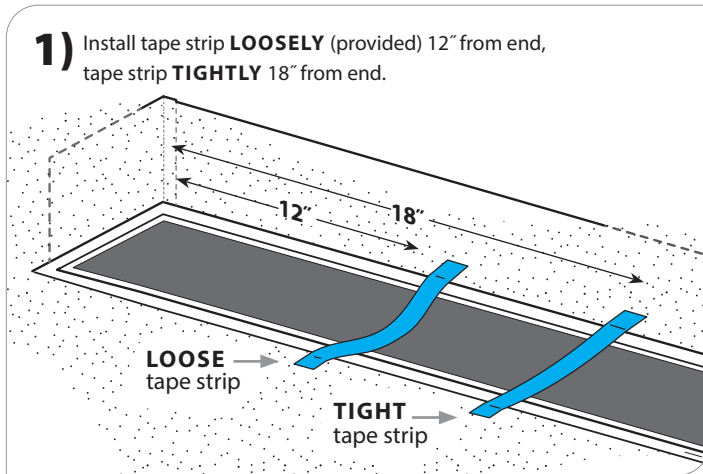
- 5)** Replace Lens. See page 3.

WARNING: Ground fixture in accordance with local and national electrical codes. Failure to do so may result in serious personal injury. Fixture Installations should ONLY be done by a qualified licensed electrical professional.



LENS INSTALLATION

⚠️ ENERGIZE ROWS TO ENSURE ALL LEDS ARE WORKING BEFORE INSTALL **👤👤 REQUIRES TWO PEOPLE TO INSTALL**



WARNING: Ground fixture in accordance with local and national electrical codes. Failure to do so may result in serious personal injury. Fixture Installations should **ONLY** be done by a qualified licensed electrical professional.