



# Stream™ Dot | Recessed 4" Square & Round

## INSTALLATION INSTRUCTIONS

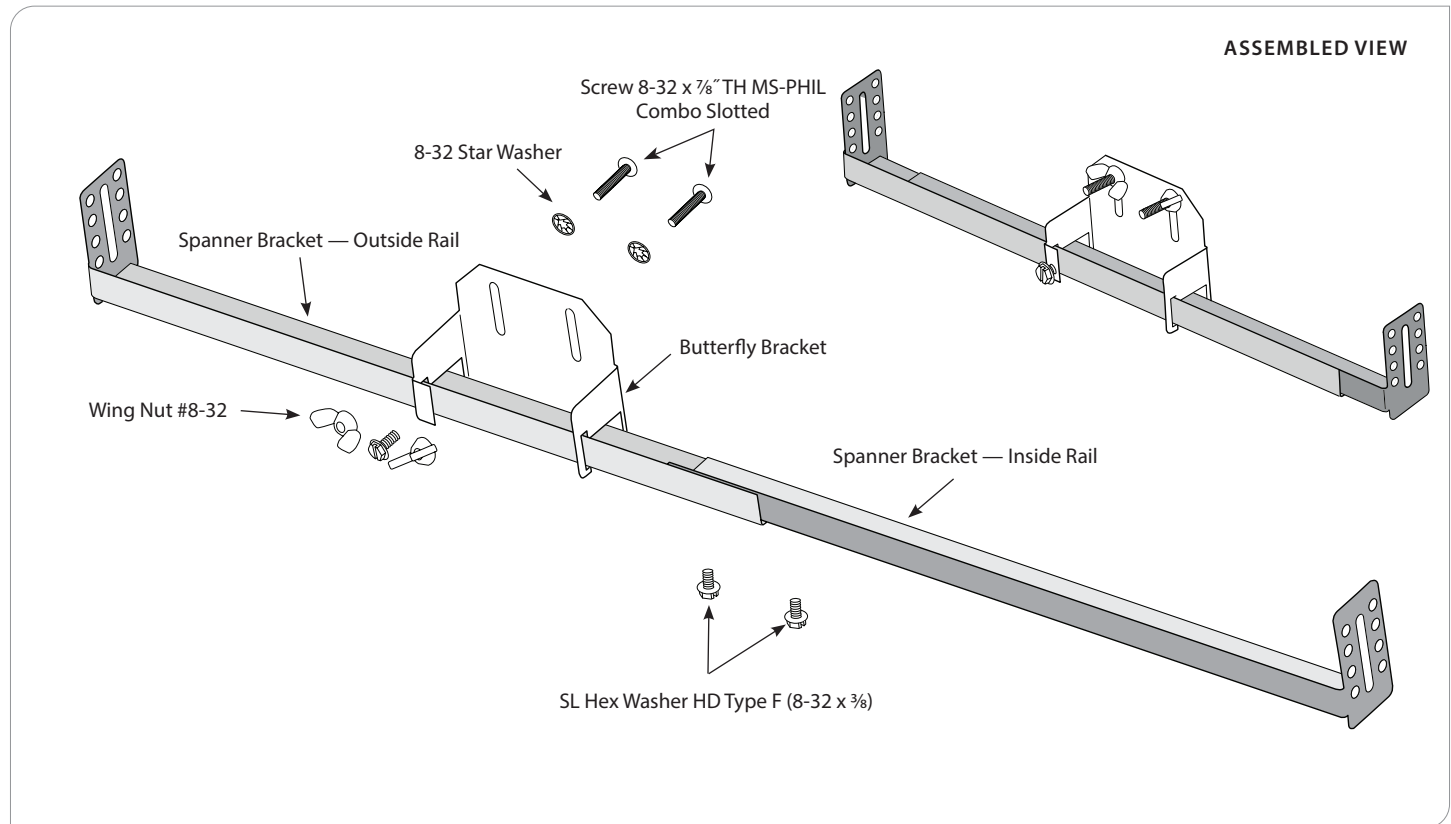
### X7 (HARD CEILING) FOR REMODEL



PRUDENTIAL LTG.

PRULITE.COM 213.746.0360

#### MOUNTING BAR KIT



#### PARTS LIST

104002	Spanner Bracket — Outside Rail	2
104003	Spanner Bracket — Inside Rail	2
104005	Butterfly Bracket	2
100-00190-14	SL Hex Washer HD Type F (8-32 x 3/8)	6
100-00023-14	Wing Nut #8-32	4
100-00050-14	Screw 8-32 x 7/8" TH MS-PHIL Combo Slotted	4
100-00068-14	8-32 Star Washer	4

This product must be installed in accordance with the applicable installation code by a person familiar with the construction and operation of the product and hazards involved.

Ce produit doit être installé selon le code d'installation pertinent, par une personne qui connaît bien le produit et son fonctionnement ainsi que risques inhérents.

**WARNING:** Ground fixture in accordance with local and national electrical codes. Failure to do so may result in serious personal injury.



Prudential Ltg. reserves the right to change design specifications or materials without notice. Please visit [prulite.com](http://prulite.com) for most current data.  
© 2015 All rights reserved – All products manufactured at: Prudential Ltg. 1774 E. 21st Street, Los Angeles, CA 90058



# Stream™ Dot | Recessed 4" Square & Round

## INSTALLATION INSTRUCTIONS

### X7 (HARD CEILING) FOR REMODEL



PRUDENTIAL LTG.

PRULITE.COM 213.746.0360

#### BASIC INSTALLATION OF ROUGH-IN BOX

##### LED DRIVER IS IN ROUGH-IN BOX

1. Existing ceiling must be cut open large enough to attach mounting bars to ceiling joists. Patch after fixture installation is complete.
2. Run supply wires through knock-out on either end of rough-in box using appropriate strain relief.

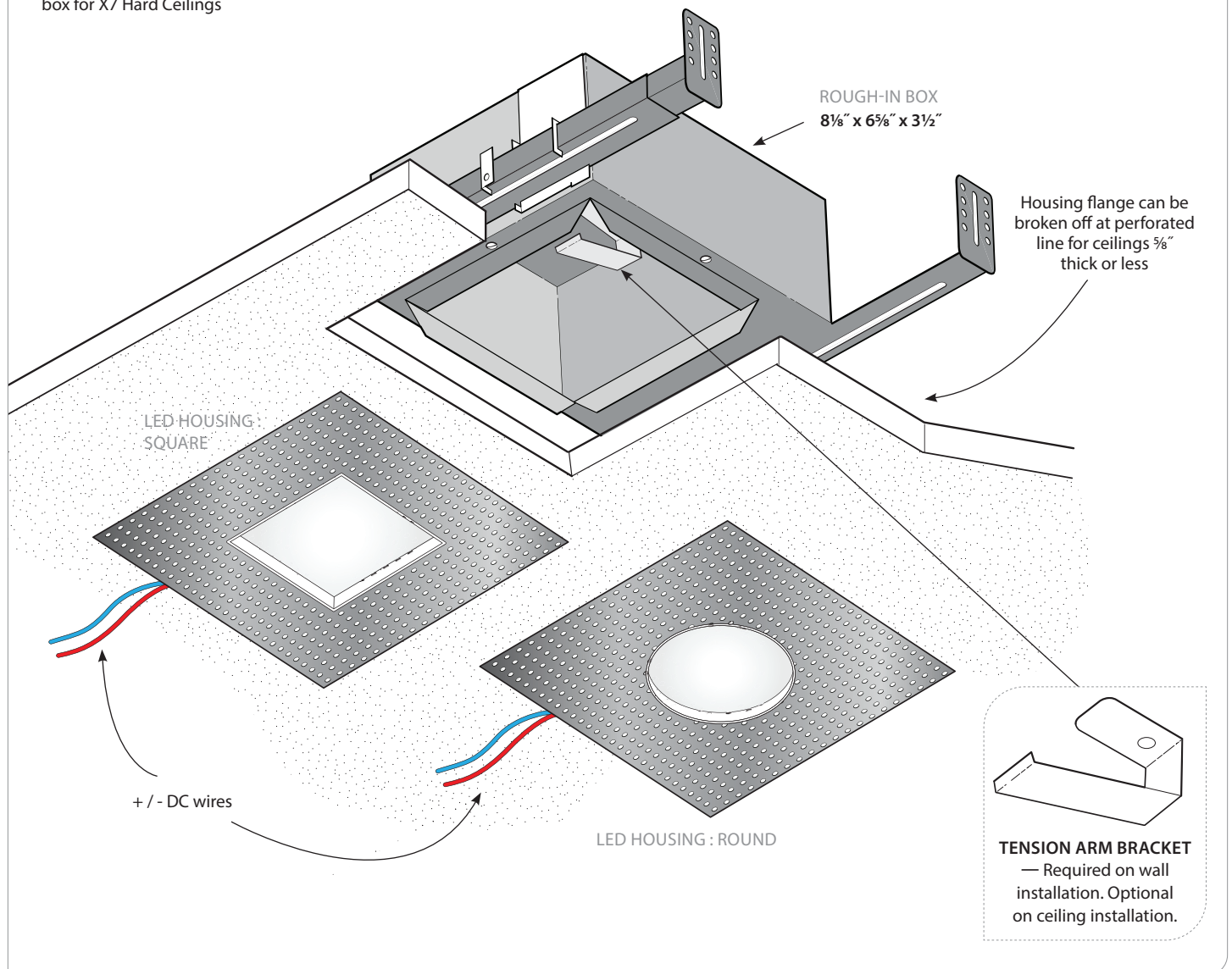
##### TENSION ARM BRACKET

1. If installing module in wall, install tension arm bracket by sliding bracket under two tabs on top of box until dimple in bracket falls into hole.

##### LED HOUSING INSTALLATION

1. Connect DC power wires to matching wires from LED driver in box.
2. Attach base unit to ceiling using  $\frac{1}{4}$ " 18 GA crown staples (by others).

**NOTE:** LED driver in rough-in box for X7 Hard Ceilings



This product must be installed in accordance with the applicable installation code by a person familiar with the construction and operation of the product and hazards involved.

Ce produit doit être installé selon le code d'installation pertinent, par une personne qui connaît bien le produit et son fonctionnement ainsi que risques inhérents.

**WARNING:** Ground fixture in accordance with local and national electrical codes. Failure to do so may result in serious personal injury.



Prudential Ltg. reserves the right to change design specifications or materials without notice. Please visit [prulite.com](http://prulite.com) for most current data.  
© 2015 All rights reserved – All products manufactured at: Prudential Ltg. 1774 E. 21st Street, Los Angeles, CA 90058



# Stream™ Dot | Recessed 4" Square & Round

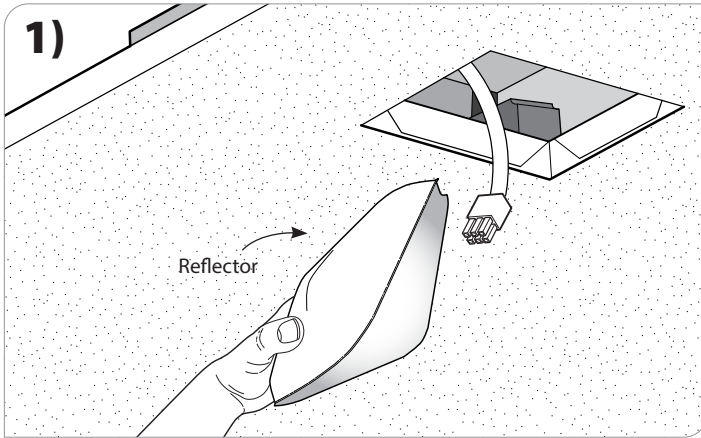
## DRIVER REPLACEMENT

### X7 (MUD-IN HARD CEILING)



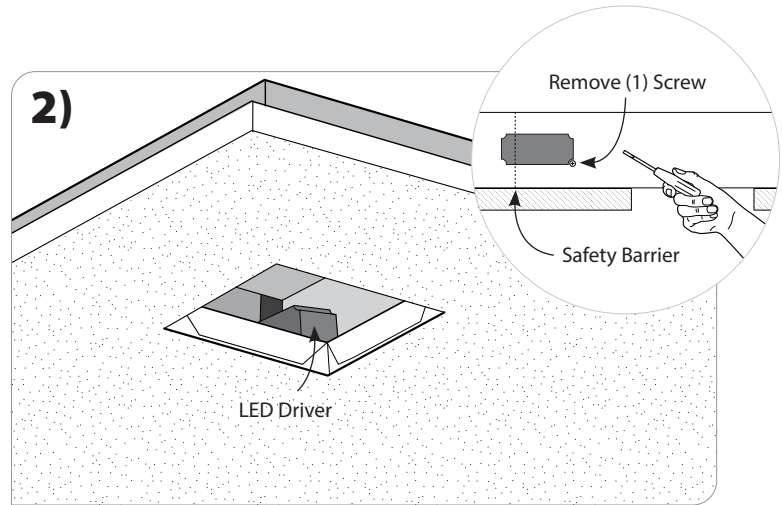
PRUDENTIAL LTG.

PRULITE.COM 213.746.0360

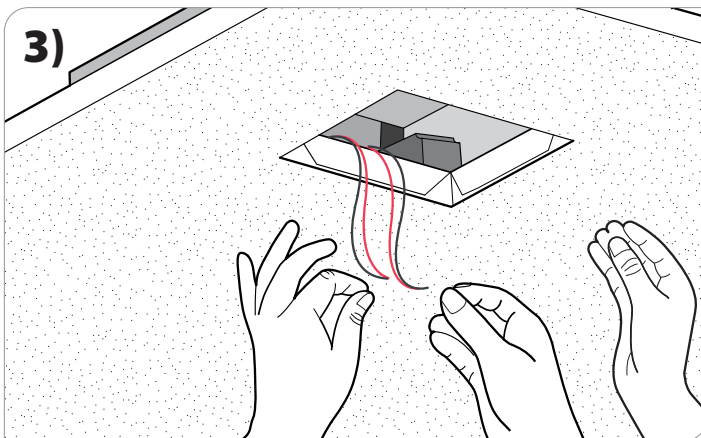


Remove reflector by pressing up and over to gain access.

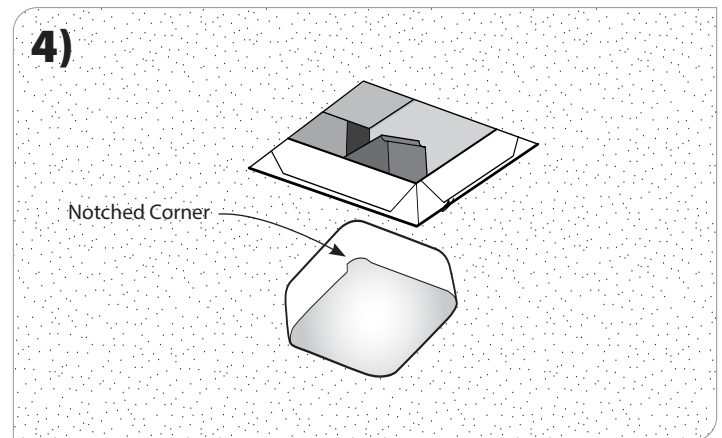
**NOTE:** The reflector is made of flexible plastic for easy removal.



Remove (1) screw holding driver in place and pull driver away from safety



Disconnect AC wires and replace driver.



When reinstalling the reflector, note the notched corner is to be placed over DC LED wires where connected to LED boards.

This product must be installed in accordance with the applicable installation code by a person familiar with the construction and operation of the product and hazards involved.

Ce produit doit être installé selon le code d'installation pertinent, par une personne qui connaît bien le produit et son fonctionnement ainsi que risques inhérents.

**WARNING:** Ground fixture in accordance with local and national electrical codes. Failure to do so may result in serious personal injury.



Prudential Ltg. reserves the right to change design specifications or materials without notice. Please visit [prulite.com](http://prulite.com) for most current data.  
© 2015 All rights reserved – All products manufactured at: Prudential Ltg. 1774 E. 21st Street, Los Angeles, CA 90058



# Stream™ Dot | Recessed 4" Square & Round

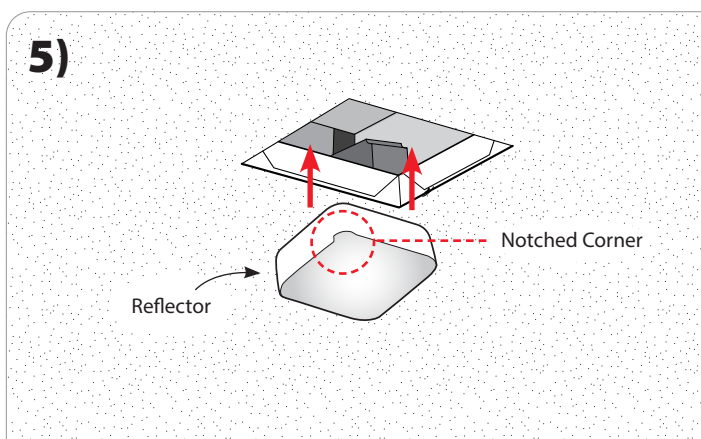
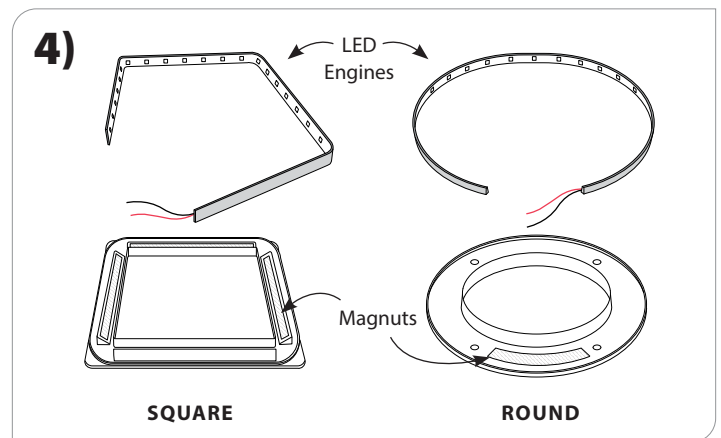
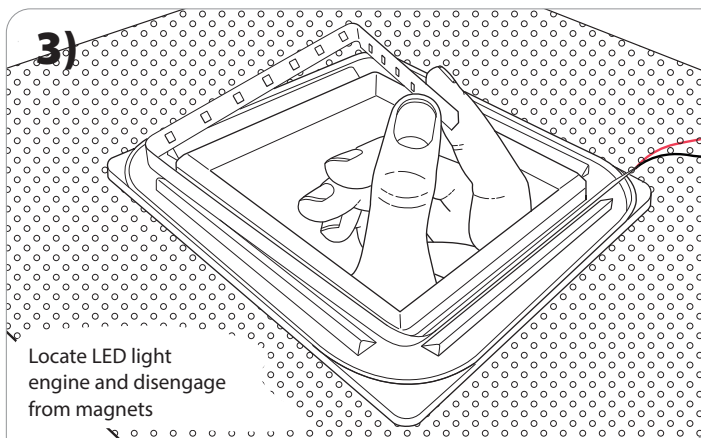
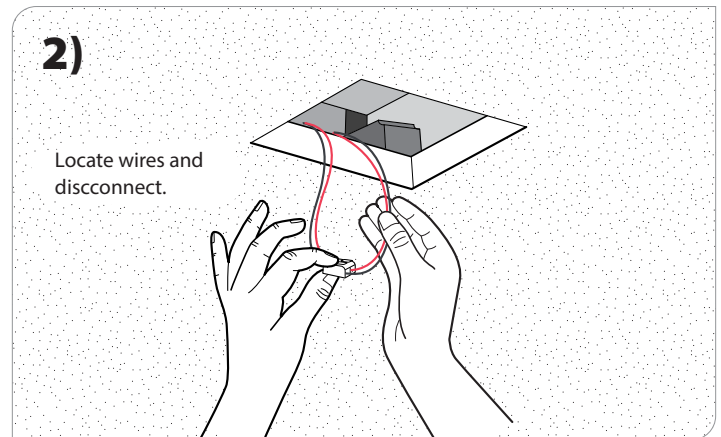
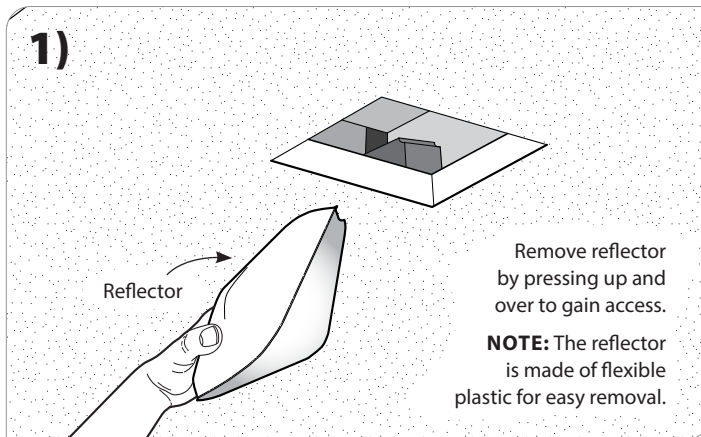
## LED REPLACEMENT

### X7 (MUD-IN HARD CEILING)



PRUDENTIAL LTG.

PRULITE.COM 213.746.0360



Reinstall reflector.

**NOTE:** The notched corner is to be placed over the DC LED wires.

This product must be installed in accordance with the applicable installation code by a person familiar with the construction and operation of the product and hazards involved.

Ce produit doit être installé selon le code d'installation pertinent, par une personne qui connaît bien le produit et son fonctionnement ainsi que risques inhérents.

**WARNING:** Ground fixture in accordance with local and national electrical codes. Failure to do so may result in serious personal injury.



Prudential Ltg. reserves the right to change design specifications or materials without notice. Please visit [prulite.com](http://prulite.com) for most current data.  
© 2015 All rights reserved – All products manufactured at: Prudential Ltg. 1774 E. 21st Street, Los Angeles, CA 90058