



Stream™ Dot | Recessed Square & Round

INSTALLATION INSTRUCTIONS

X3 (FLANGED HARD CEILING)

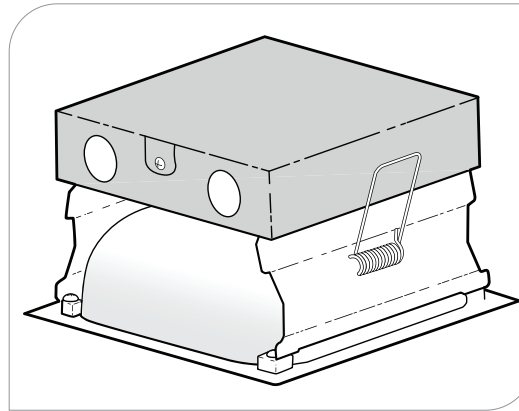
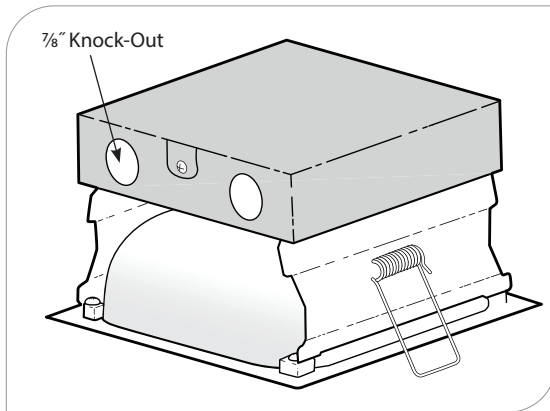


PRUDENTIAL LTG.

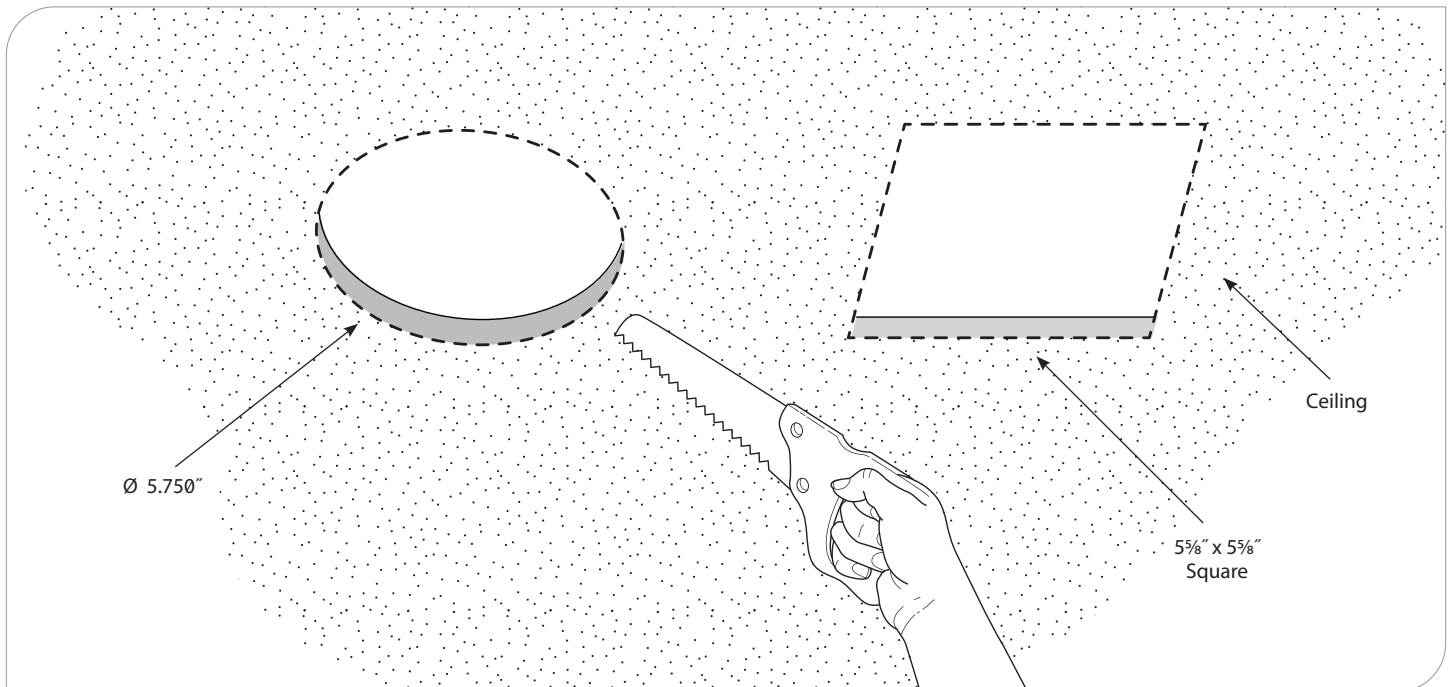
PRULITE.COM 213.746.0360

GENERAL INSTALLATION

1. Cut opening in the ceiling. LED module has minimal flange, ceiling opening must be cut within $\pm 1/32$ " of stated size.
2. Open top cover of box on LED module to access wiring connections.
3. Run supply wire through knock-out using appropriate strain relief.
4. Connect supply wires and close box.
5. Rotate box spring upward to allow passage through cutout in ceiling until the flange is flush against the ceiling. The springs will rotate back and hold module in place.



WARNING: Spring clips may injure fingers if holding outside edge of frame. Remove fixture by holding **INSIDE LIP** of frame and pull away from ceiling/wall.



This product must be installed in accordance with the applicable installation code by a person familiar with the construction and operation of the product and hazards involved.

Ce produit doit être installé selon le code d'installation pertinent, par une personne qui connaît bien le produit et son fonctionnement ainsi que risques inhérents.

WARNING: Ground fixture in accordance with local and national electrical codes. Failure to do so may result in serious personal injury.



Prudential Ltg. reserves the right to change design specifications or materials without notice. Please visit prulite.com for most current data.
© 2015 All rights reserved – All products manufactured at: Prudential Ltg. 1774 E. 21st Street, Los Angeles, CA 90058



Stream™ Dot | Recessed 4" Square & Round

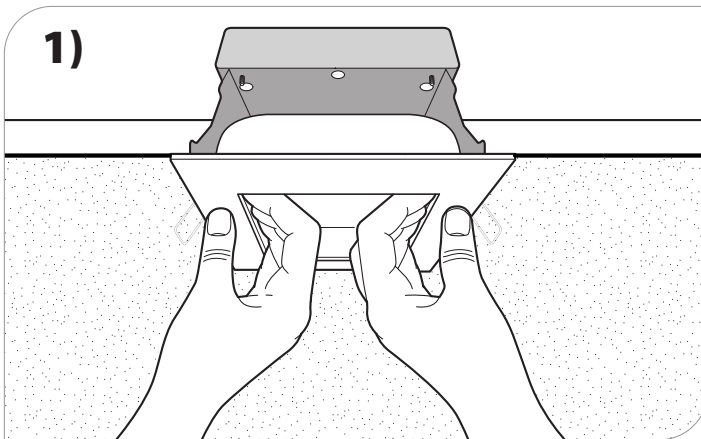
DRIVER REPLACEMENT

X1 (T-BAR) & X3 (FLANGED HARD CEILING)

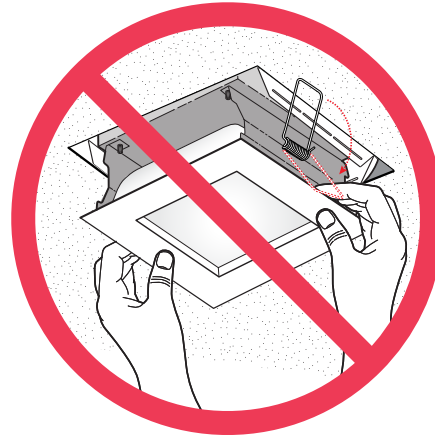


PRUDENTIAL LTG.

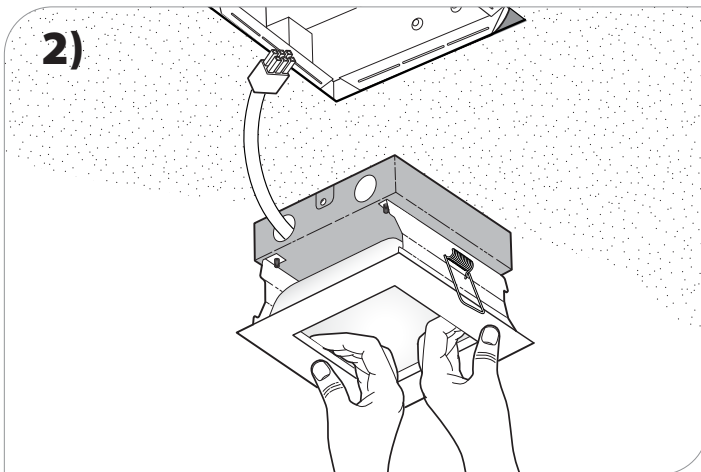
PRULITE.COM 213.746.0360



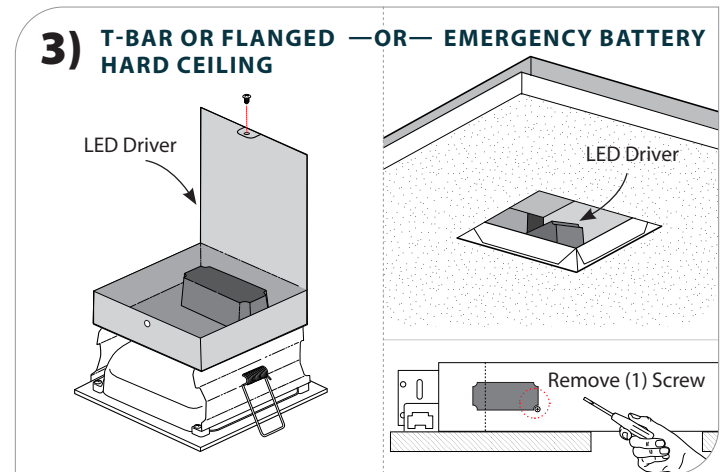
Remove fixture from ceiling by pulling from inside edge.



WARNING: Do **NOT** pull from outside edge — Spring clips can incur injury.

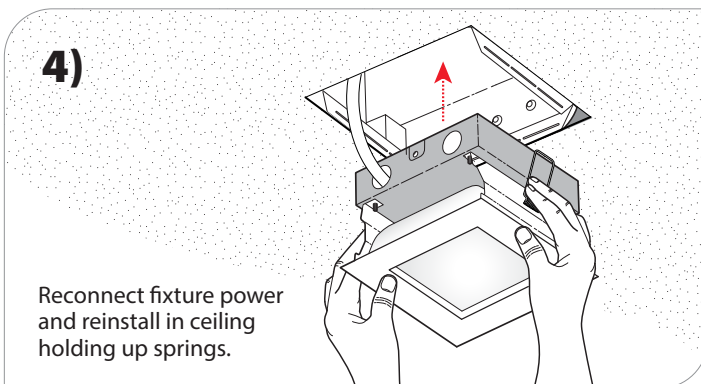


Disconnect fixture.



Replace driver from housing or locate in rough-in box. (AC building wire behind barrier)

Remove (1) screw holding driver in place. Disconnect and replace driver.



Reconnect fixture power and reinstall in ceiling holding up springs.

This product must be installed in accordance with the applicable installation code by a person familiar with the construction and operation of the product and hazards involved.

Ce produit doit être installé selon le code d'installation pertinent, par une personne qui connaît bien le produit et son fonctionnement ainsi que risques inhérents.

WARNING: Ground fixture in accordance with local and national electrical codes. Failure to do so may result in serious personal injury.



Prudential Ltg. reserves the right to change design specifications or materials without notice. Please visit prulite.com for most current data.
© 2015 All rights reserved – All products manufactured at: Prudential Ltg. 1774 E. 21st Street, Los Angeles, CA 90058



Stream™ Dot | Recessed 4" Square & Round

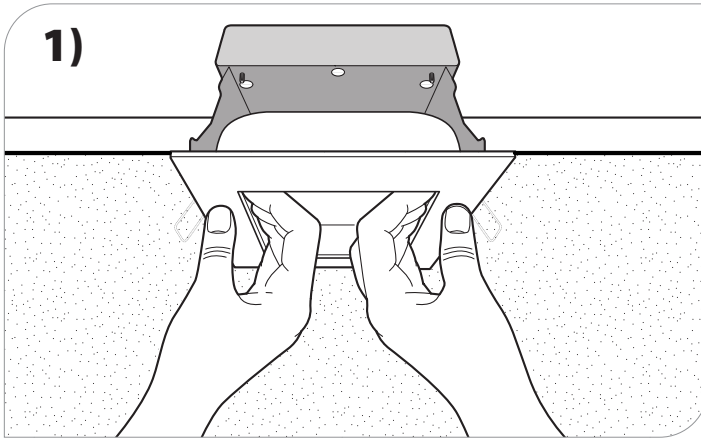
LED REPLACEMENT

X1 (T-BAR) & X3 (FLANGED HARD CEILING)

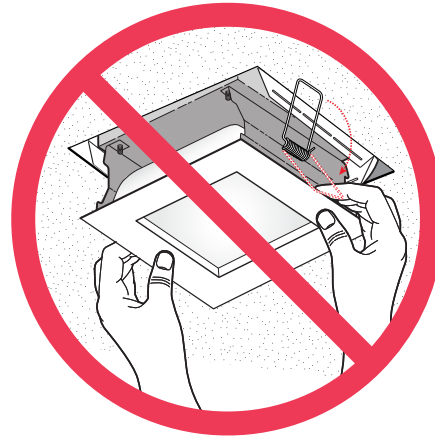


PRUDENTIAL LTG.

PRULITE.COM 213.746.0360

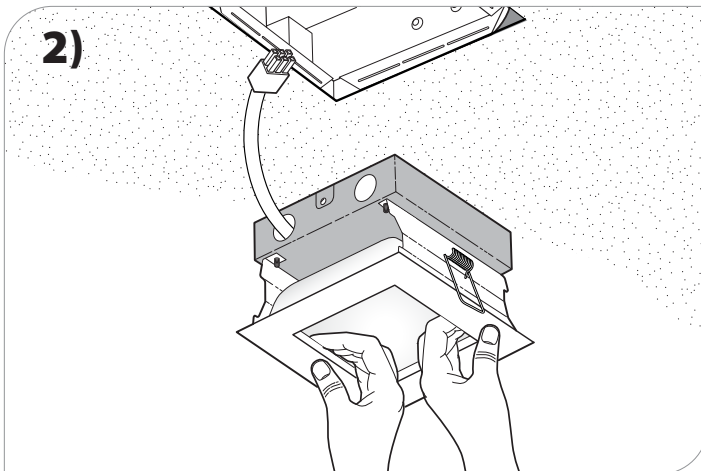


Remove fixture from ceiling by pulling from inside edge.

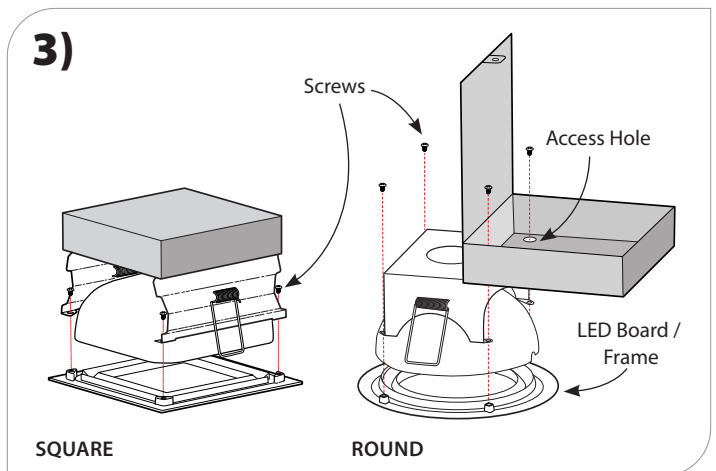


WARNING:

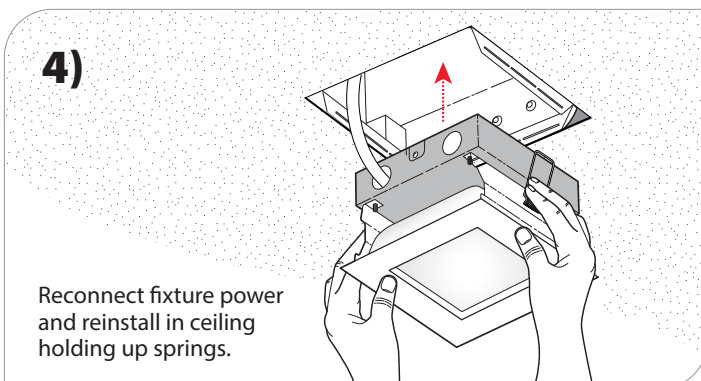
Do **NOT** pull from outside edge — Spring clips can incur injury.



Disconnect fixture.



Remove (4) screws to detach trim frame/ LED board and replace with new frame/ LED board.



Reconnect fixture power
and reinstall in ceiling
holding up springs.

This product must be installed in accordance with the applicable installation code by a person familiar with the construction and operation of the product and hazards involved.

Ce produit doit être installé selon le code d'installation pertinent, par une personne qui connaît bien le produit et son fonctionnement ainsi que risques inhérents.

WARNING: Ground fixture in accordance with local and national electrical codes. Failure to do so may result in serious personal injury.



Prudential Ltg. reserves the right to change design specifications or materials without notice. Please visit prulite.com for most current data.
© 2015 All rights reserved – All products manufactured at: Prudential Ltg. 1774 E. 21st Street, Los Angeles, CA 90058



Stream™ Dot | Recessed Square & Round

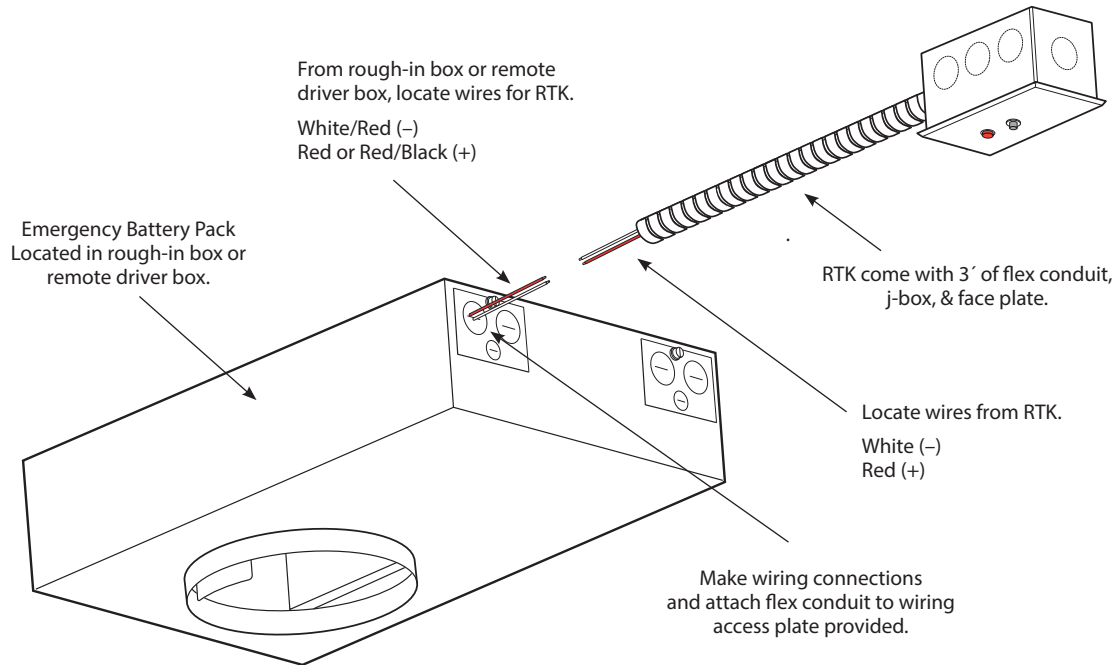
INSTALLATION INSTRUCTIONS



PRUDENTIAL LTG.

PRULITE.COM 213.746.0360

EMERGENCY BATTERY PACK WITH REMOTE TEST KIT (RTK)



This product must be installed in accordance with the applicable installation code by a person familiar with the construction and operation of the product and hazards involved.

Ce produit doit être installé selon le code d'installation pertinent, par une personne qui connaît bien le produit et son fonctionnement ainsi que risques inhérents.

WARNING: Ground fixture in accordance with local and national electrical codes. Failure to do so may result in serious personal injury.



Prudential Ltg. reserves the right to change design specifications or materials without notice. Please visit prulite.com for most current data.
© 2015 All rights reserved – All products manufactured at: Prudential Ltg. 1774 E. 21st Street, Los Angeles, CA 90058