



# Stream™ Dot | Recessed 4" Round

## INSTALLATION INSTRUCTIONS

### X3R (INCLUDES ROUGH-IN BOX)



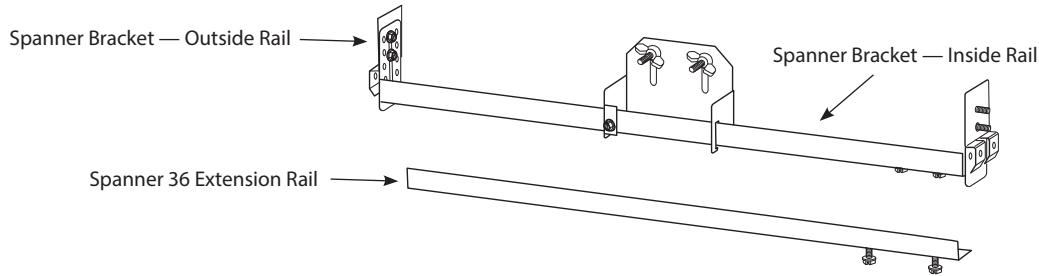
PRUDENTIAL LTG.

PRULITE.COM 213.746.0360

#### MOUNTING BAR KIT

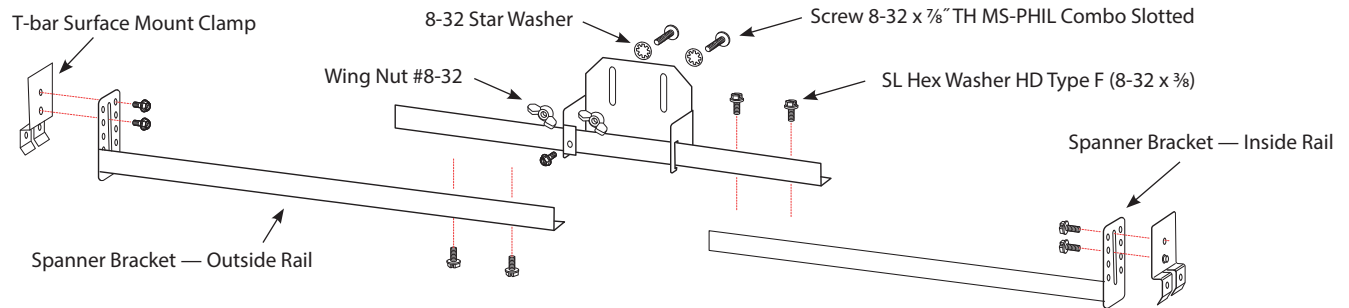
##### SPANNER BRACKET ASSEMBLY

WILL WORK WITH T-BAR CENTERS OF 16" TO 24"



##### SPANNER 36 EXTENSION RAIL

USED FOR T-BAR CENTERS OVER 24" TO 36"



#### PARTS LIST

105367	<b>SPANNER BRACKET ASSEMBLY KIT</b>	1
104002	Spanner Bracket — Outside Rail	2
104003	Spanner Bracket — Inside Rail	2
101977	T-bar Surface Mount Clamp	4
163036	Spanner 36 Extension Rail	2
104005	Butterfly Bracket	2
100-00190-14	SL Hex Washer HD Type F (8-32 x 3/8)	18
100-00023-14	Wing Nut #8-32	4
100-00050-14	Screw 8-32 x 7/8" TH MS-PHIL Combo Slotted	4
100-00068-14	8-32 Star Washer	4

This product must be installed in accordance with the applicable installation code by a person familiar with the construction and operation of the product and hazards involved.

Ce produit doit être installé selon le code d'installation pertinent, par une personne qui connaît bien le produit et son fonctionnement ainsi que risques inhérents.

**WARNING:** Ground fixture in accordance with local and national electrical codes. Failure to do so may result in serious personal injury.



Prudential Ltg. reserves the right to change design specifications or materials without notice. Please visit [prulite.com](http://prulite.com) for most current data.  
© 2015 All rights reserved – All products manufactured at: Prudential Ltg. 1774 E. 21st Street, Los Angeles, CA 90058



# Stream™ Dot | Recessed 4" Round

## INSTALLATION INSTRUCTIONS

### X3R (INCLUDES ROUGH-IN BOX)



PRUDENTIAL LTG.

PRULITE.COM 213.746.0360

#### BASIC INSTALLATION

##### LED DRIVER IN LED HOUSING

1. Mounting bars are adjustable for joist spacing from 16"–36". Attach bars to rough-in box using hardware provided.
2. Run supply wires through knock-out on either access plate on end of rough-in box using appropriate strain relief.

##### LED HOUSING INSTALLATION

3. Connect power and control (if included) wires from LED housing to supply wires in rough-in box.
4. Rotate box spring upward to allow passage through cutout in ceiling until the flange is flush against the ceiling. The springs will rotate back and hold module in place.

#### EMERGENCY BATTERY INSTALLATION

##### EMERGENCY BATTERY AND LED DRIVER IN ROUGH-IN BOX

1. Mounting bars are adjustable for ceiling joist spacing from 16"–36". Attach bars to rough-in box using hardware provided.
2. Run supply wires through knock-out on either access plate on box using appropriate strain relief.

##### LED HOUSING INSTALLATION

3. Connect + / - DC wires from LED housing to matching wires in rough-in box.
4. Rotate box spring upward to allow passage through cutout in ceiling until the flange is flush against the ceiling. The springs will rotate back and hold LED housing in place.

Attach mounting bars to box using wing nut and bolts supplied. Star lock washer is placed on bolt on the inside of the box.

3/8" Knock-out for supply wires.

NEW CONSTRUCTION ROUGH-IN BOX  
15 1/4" x 9 1/2" x 3 1/2"

Housing flange can be broken off at perforated line for ceilings 3/8" thick or less

Power and control wires (basic install)  
+ / - DC wires (Emergency Battery install)

CUT SIZE  
Round: 5 13/16" Diameter

LED HOUSING: ROUND

**WARNING:** Spring clips may injure fingers if holding outside edge of frame. Remove fixture by holding **INSIDE LIP** of frame and pull away from ceiling/wall.

This product must be installed in accordance with the applicable installation code by a person familiar with the construction and operation of the product and hazards involved.

Ce produit doit être installé selon le code d'installation pertinent, par une personne qui connaît bien le produit et son fonctionnement ainsi que risques inhérents.

**WARNING:** Ground fixture in accordance with local and national electrical codes. Failure to do so may result in serious personal injury.



Prudential Ltg. reserves the right to change design specifications or materials without notice. Please visit [prulite.com](http://prulite.com) for most current data.  
© 2015 All rights reserved – All products manufactured at: Prudential Ltg. 1774 E. 21st Street, Los Angeles, CA 90058



# Stream™ Dot | Recessed 4" Square & Round

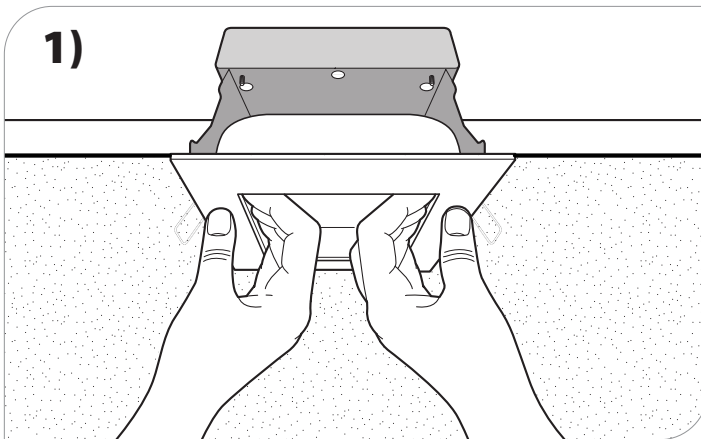
## DRIVER REPLACEMENT

### X1 (T-BAR) & X3 (FLANGED HARD CEILING)

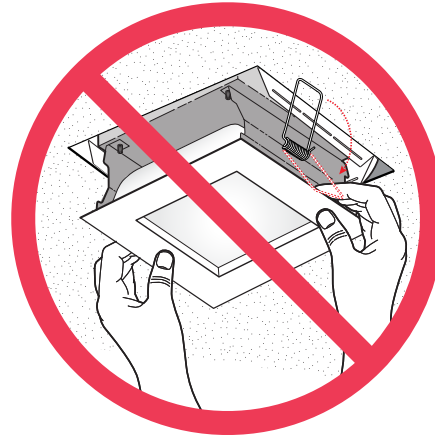


PRUDENTIAL LTG.

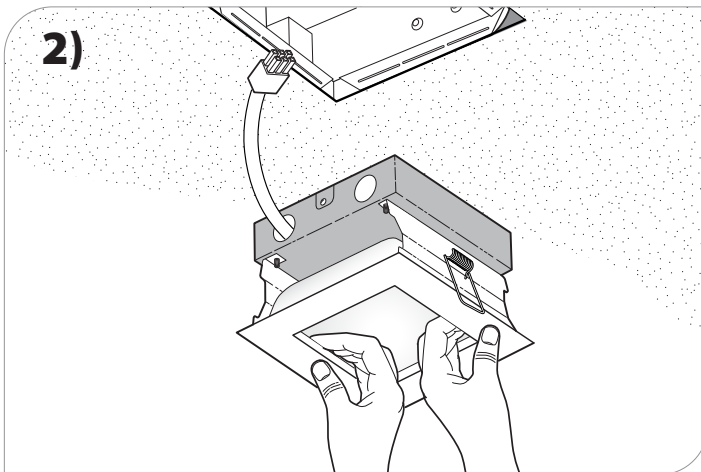
PRULITE.COM 213.746.0360



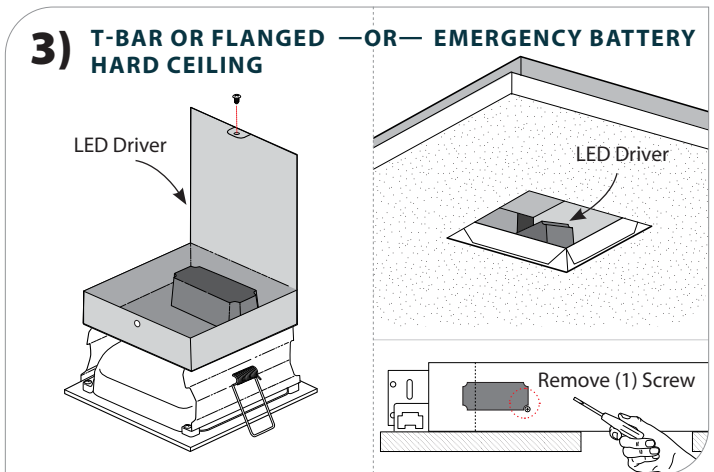
Remove fixture from ceiling by pulling from inside edge.



**WARNING:** Do **NOT** pull from outside edge — Spring clips can incur injury.

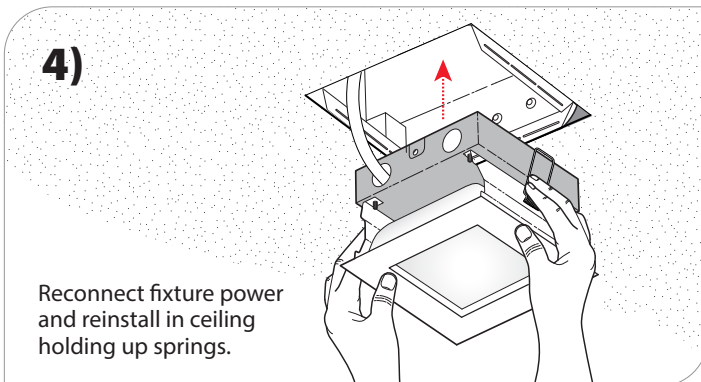


Disconnect fixture.



Replace driver from housing or locate in rough-in box. (AC building wire behind barrier)

Remove (1) screw holding driver in place. Disconnect and replace driver.



Reconnect fixture power and reinstall in ceiling holding up springs.

This product must be installed in accordance with the applicable installation code by a person familiar with the construction and operation of the product and hazards involved.

Ce produit doit être installé selon le code d'installation pertinent, par une personne qui connaît bien le produit et son fonctionnement ainsi que risques inhérents.

**WARNING:** Ground fixture in accordance with local and national electrical codes. Failure to do so may result in serious personal injury.



Prudential Ltg. reserves the right to change design specifications or materials without notice. Please visit [prulite.com](http://prulite.com) for most current data.  
© 2015 All rights reserved – All products manufactured at: Prudential Ltg. 1774 E. 21st Street, Los Angeles, CA 90058



# Stream™ Dot | Recessed 4" Square & Round

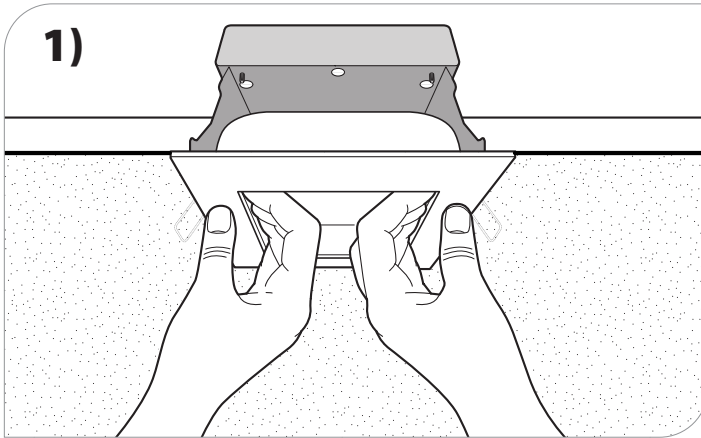
## LED REPLACEMENT

### X1 (T-BAR) & X3 (FLANGED HARD CEILING)

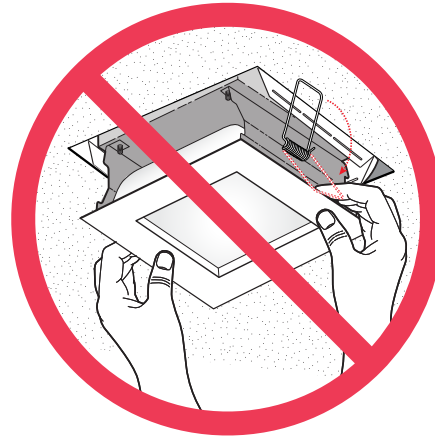


PRUDENTIAL LTG.

PRULITE.COM 213.746.0360

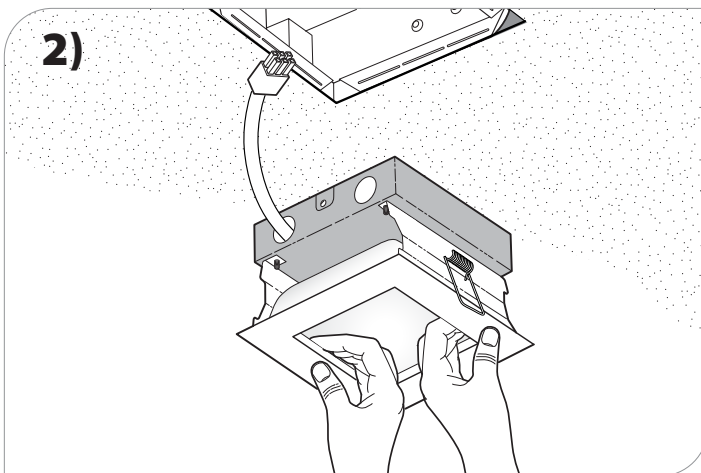


Remove fixture from ceiling by pulling from inside edge.

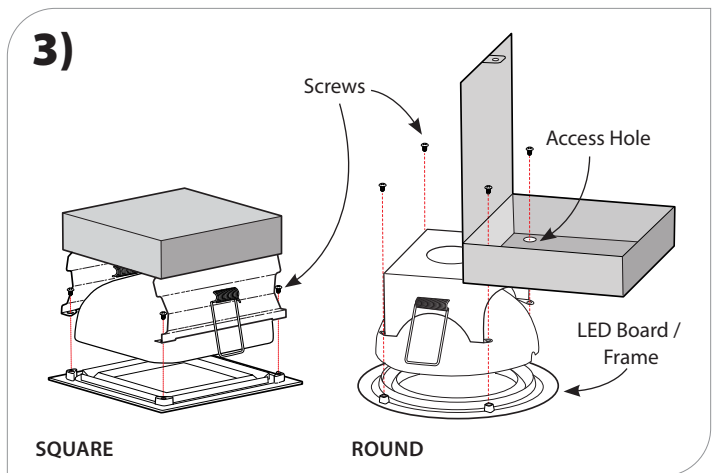


#### WARNING:

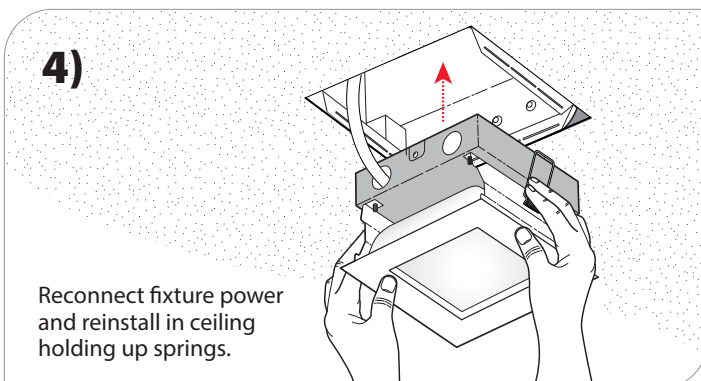
Do **NOT** pull from outside edge — Spring clips can incur injury.



Disconnect fixture.



Remove (4) screws to detach trim frame. Unplug connector and remove LED board (note orientation of installed LED board). Install new LED board on trim frame and plug the connector. Attach trim frame using the same (4) screws.



Reconnect fixture power and reinstall in ceiling holding up springs.

This product must be installed in accordance with the applicable installation code by a person familiar with the construction and operation of the product and hazards involved.

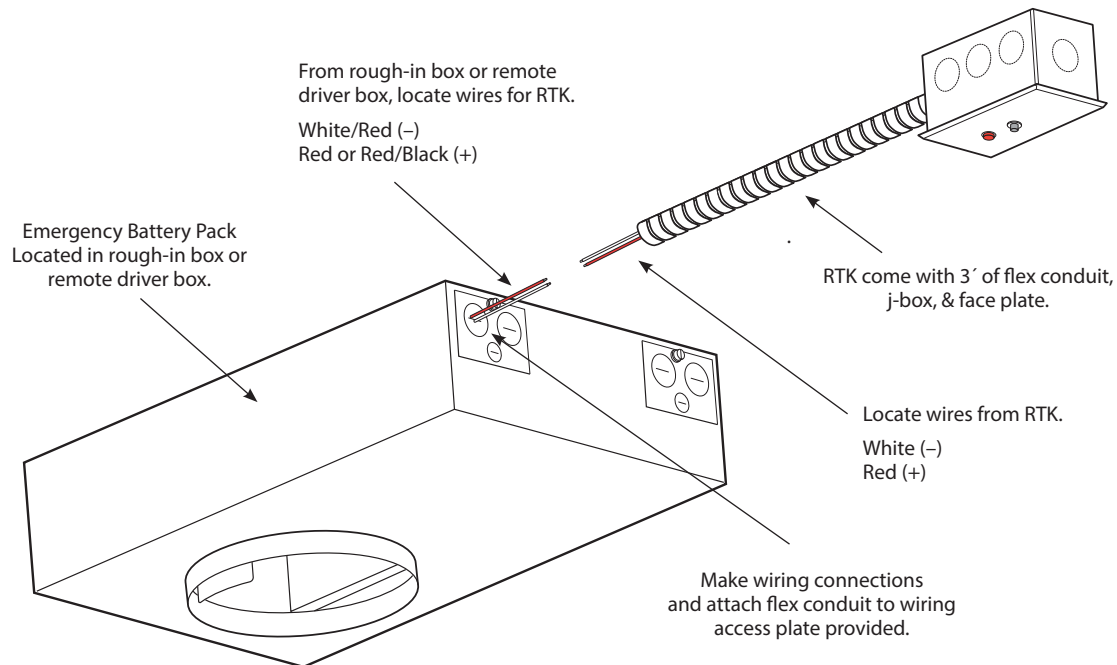
Ce produit doit être installé selon le code d'installation pertinent, par une personne qui connaît bien le produit et son fonctionnement ainsi que risques inhérents.

**WARNING:** Ground fixture in accordance with local and national electrical codes. Failure to do so may result in serious personal injury.



Prudential Ltg. reserves the right to change design specifications or materials without notice. Please visit [prulite.com](http://prulite.com) for most current data.  
© 2015 All rights reserved – All products manufactured at: Prudential Ltg. 1774 E. 21st Street, Los Angeles, CA 90058

## EMERGENCY BATTERY PACK WITH REMOTE TEST KIT (RTK)



This product must be installed in accordance with the applicable installation code by a person familiar with the construction and operation of the product and hazards involved.

Ce produit doit être installé selon le code d'installation pertinent, par une personne qui connaît bien le produit et son fonctionnement ainsi que risques inhérents.

**WARNING:** Ground fixture in accordance with local and national electrical codes. Failure to do so may result in serious personal injury.