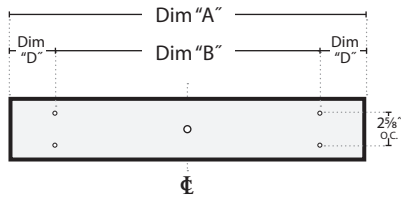




## INSTALLATION INSTRUCTIONS

### SURFACE MOUNT

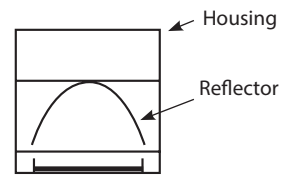
#### INDIVIDUAL MOUNTING:



#### MOUNTING DIMENSIONS

Overall Fixture	Individual	Continuos	Start/End
Dim. "A"	Dim. "B"	Dim. "C"	Dim. "D"
2'-0"	14"	10"	5"
3'-0"	26"	10"	5"
4'-0"	38"	10"	5"

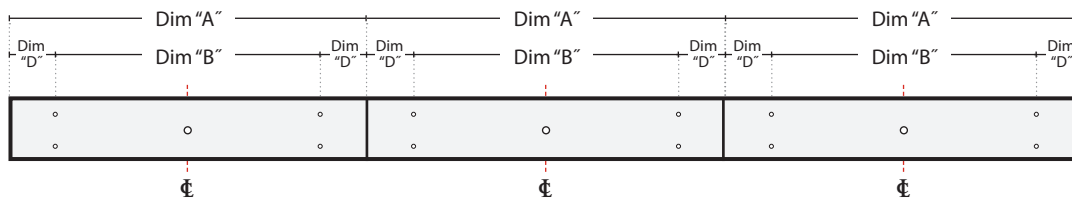
#### CROSS SECTION



#### CONTINUOS ROW MOUNTING:



ROW DIRECTION: INSTALL FROM LEFT TO RIGHT

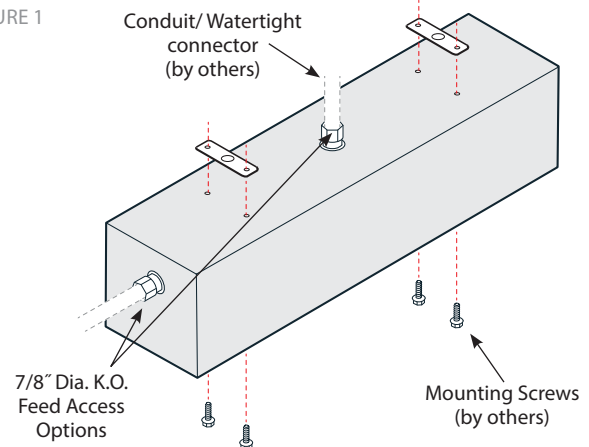


### MOUNTING INSTALLATION

**NOTE:** See row diagram or Prudential Lighting plan layout (if provided). Begin all row mounting from left to right (see arrows).

1. Remove door by loosening (6) #8 screws. Remove reflector to expose mounting holes and ballast lead wires by removing (2) #8 screws.
2. Depending upon ceiling construction reinforcement may be required at mounting locations. Insert mounting screws (by others) through holes on top of housing and gasket (included) and secure to structure. Remove 7/8" k.o. at optional access feed locations needed. Attach a watertight connector hub or equivalent to conduit (by others). Make all wire connections and replace reflector. Install lamp and replace door.

FIGURE 1

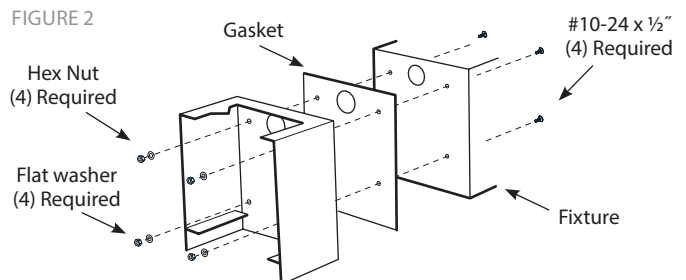


### CONTINUOUS ROW

**NOTE:** Refer to continuous mounting plan above for wall plate locations. Install one fixture section at a time, attempting to install fully assembled row may damage the weather tight seal

1. Remove all K.O's from fixture coupled ends. Peel backing from gasket and apply adhesive side to end of mounted fixture. Be sure all end rows align with gasket.
2. Lift fixture and hang cast cover onto wall plate.
3. Secure fixture ends together with (4) #10-24 x 1/2" screws and hex nuts provided (see figure 2).

FIGURE 2



**WARNING:** Ground fixture in accordance with local and national electrical codes. Failure to do so may result in serious personal injury.

