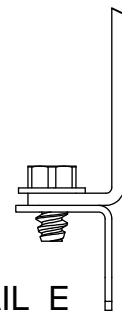
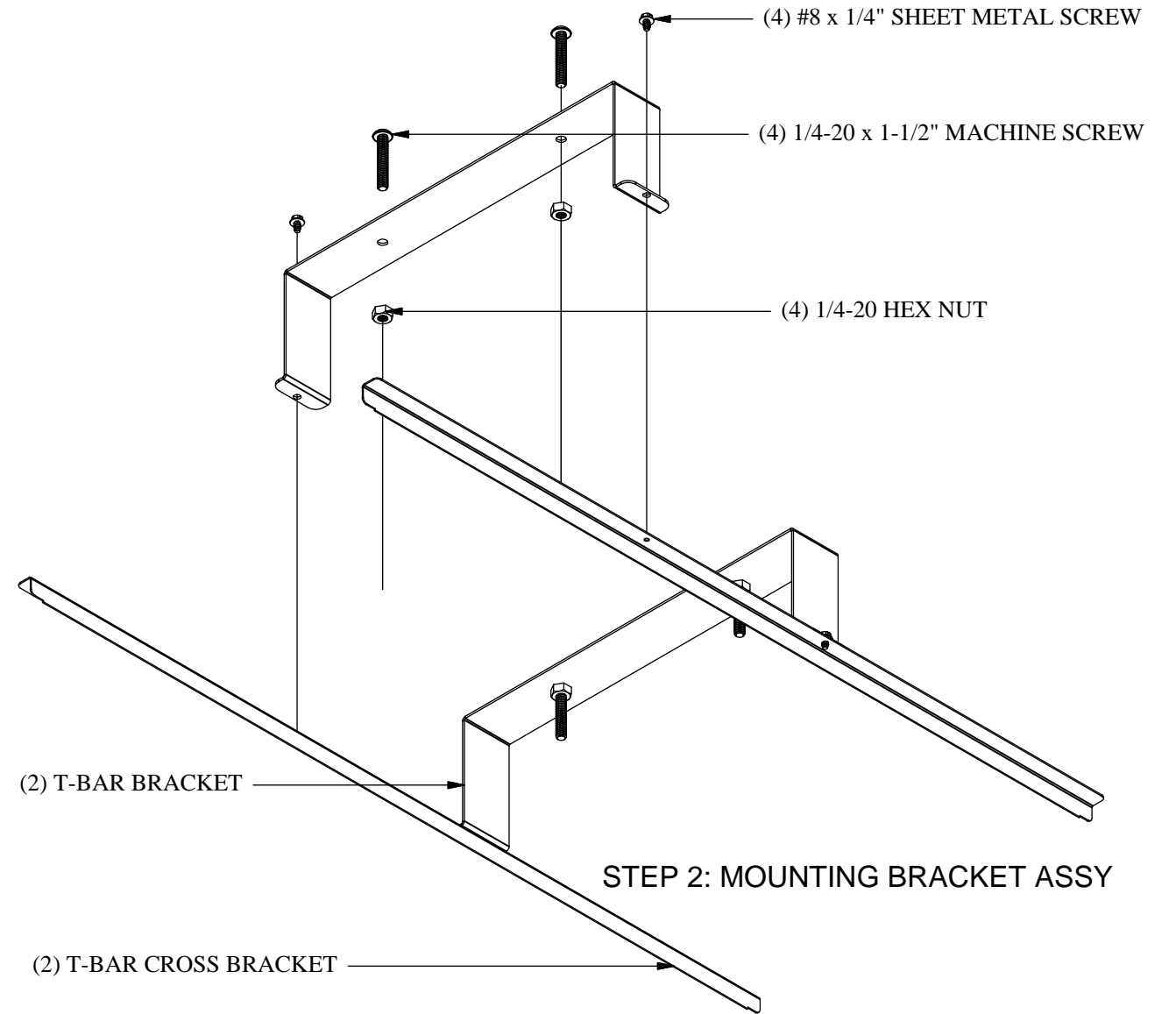


STEP 1 - CEILING TILE CUT-OUT

Step 1:
Using matte knife, cut out 11-1/8" square from center of ceiling tile.
Cut-out should be equal distance from center line on all sides.

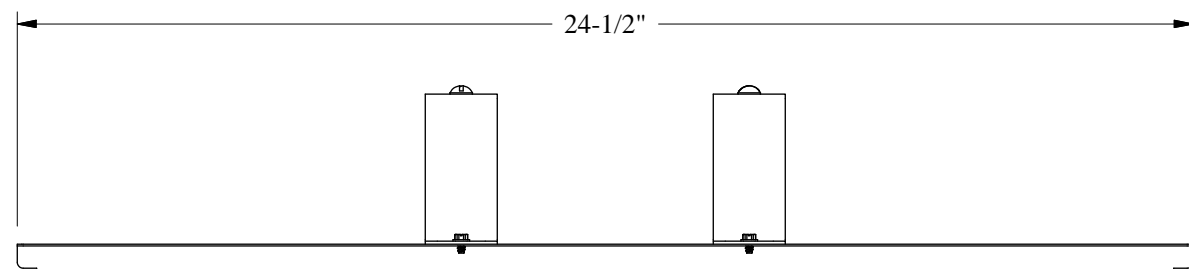


DETAIL E
SCALE 1 : 1

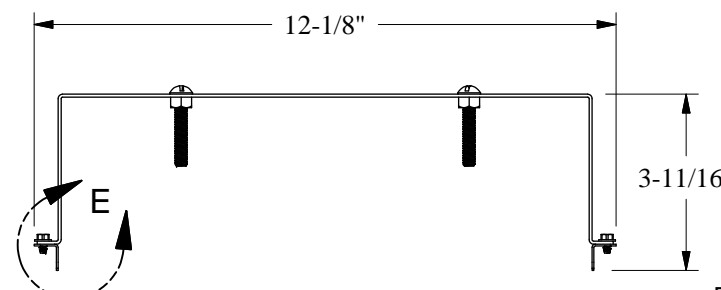


STEP 2: MOUNTING BRACKET ASSY


Step 2:
Assemble mounting bracket using (2) T-bar brackets and (2) cross brackets.
Fasten with (4) #8x1/4" sheetmetal screws. Attach (4) 1/4-20x1-1/2" machine screws through holes in cross brackets and secure with (4) 1/4-20 hex nuts.



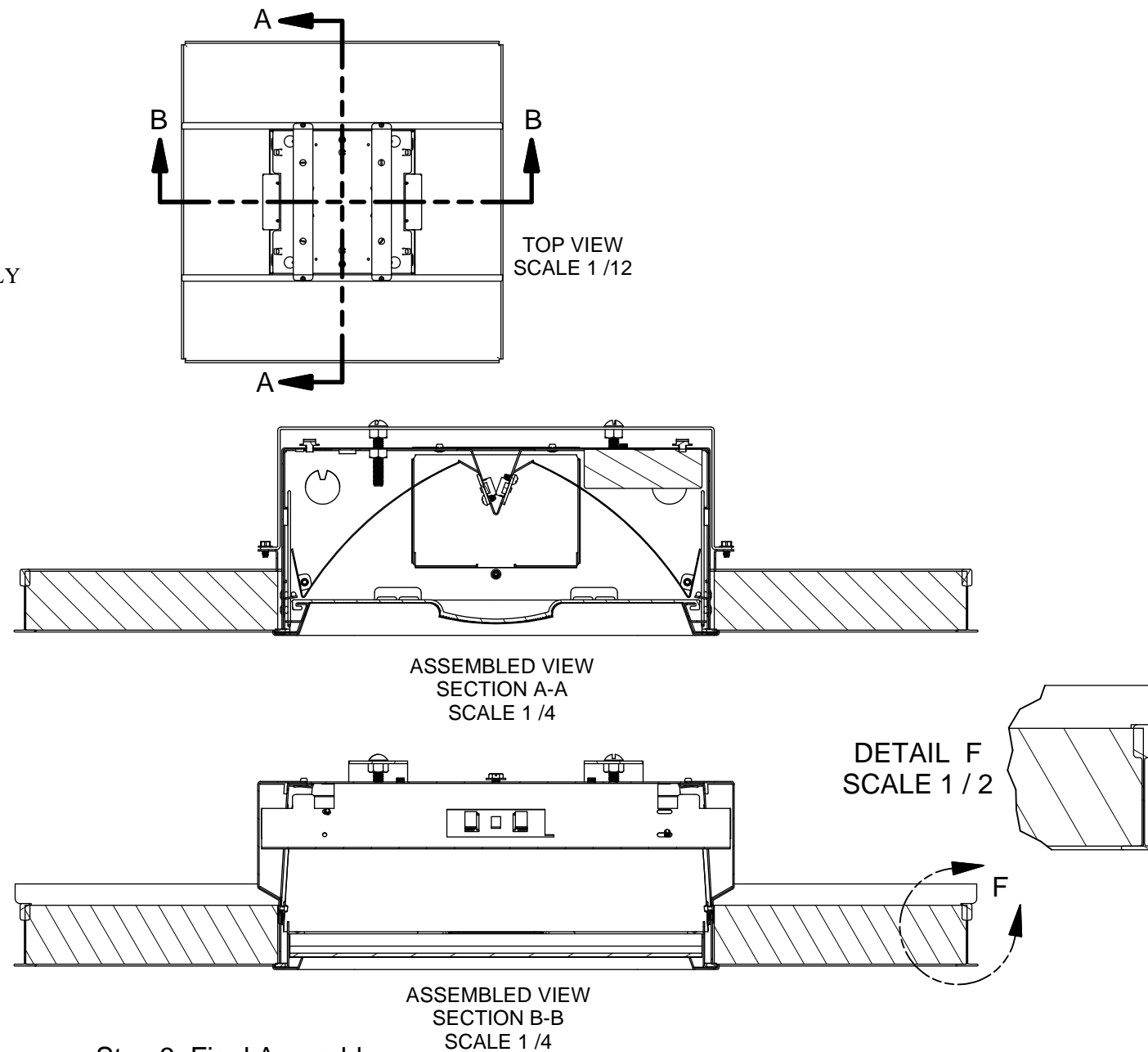
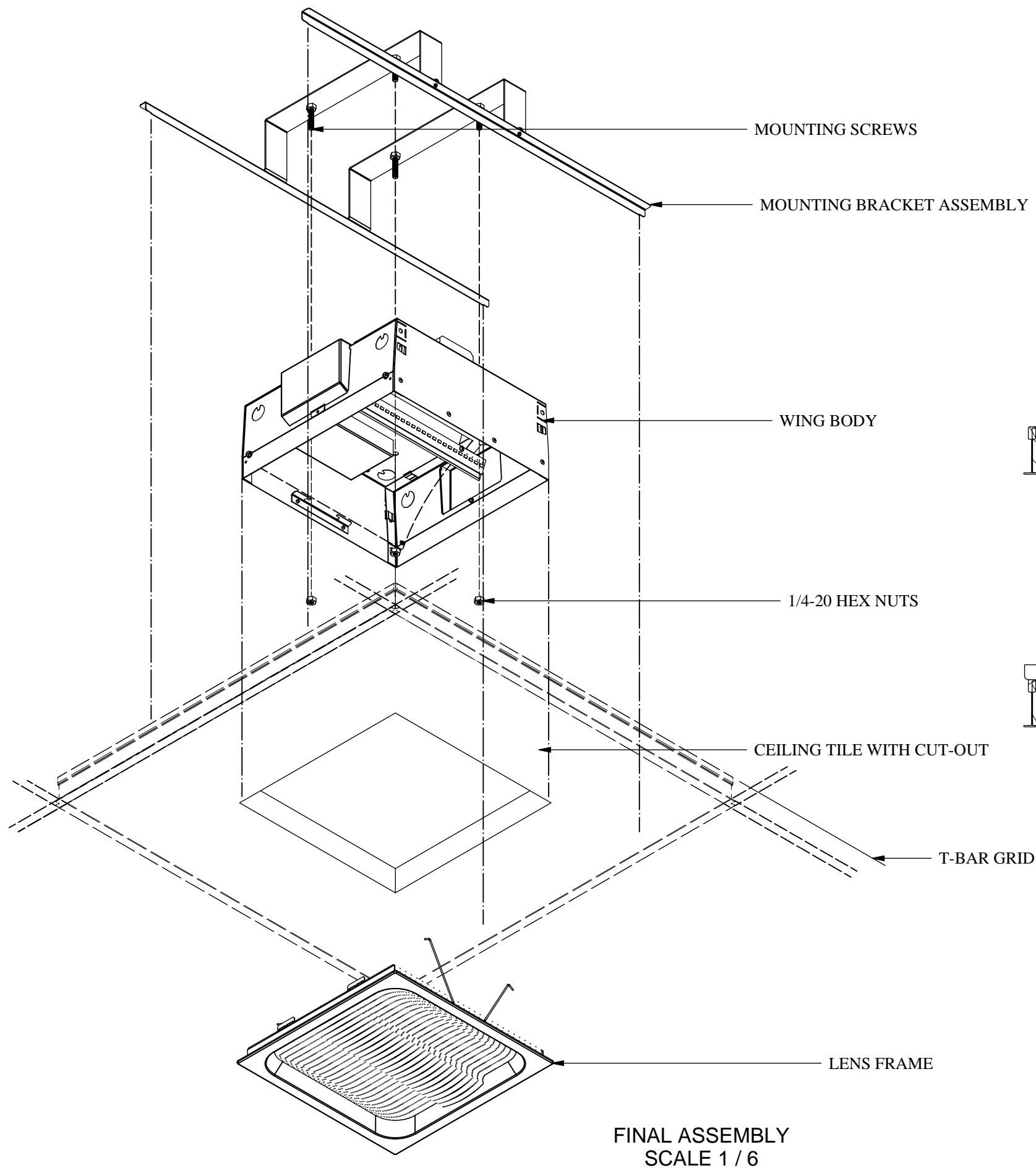
ASSEMBLED BRACKET - SIDE
SCALE 1 / 4



ASSEMBLED BRACKET - FRONT
SCALE 1 / 4


Drawing Size B	Scale
 Prudential LTG. 1774 East 21st Street, Los Angeles, CA 90058 www.prulite.com	Sheet 1 of 2
	Finish
	Material

Drawn By RMS	Date	Project Wing Description 1x1 Installation instructions
Check	Date	
Appr	Date	
Part Number		Rev



Step 3: Final Assembly

Lower the Wing body into the cut-out in the ceiling tile and position the mounting bracket screws so that they penetrate through holes in the body. Open the reflectors and secure body to mounting bracket with 1/4-20 hex nuts. Adjust nuts so that bottom of body is flush with the bottom of tile. Resecure reflectors and make electrical connections. Insert lens frame torsion springs into side brackets and snap into place.

Drawing Size B	Scale
 Prudential LTG.	Sheet 2 of 2
	Finish
	Material
1774 East 21st Street, Los Angeles, CA 90058 www.prlite.com	

Drawn By RMS	Date	Project Wing
Check	Date	Description 1x1 Installation instructions
Appr	Date	
Part Number		Rev