



# Stream™ | Recessed Linear 2" & 4" Veiled Ambient Slot

## MAINTENANCE INSTRUCTIONS

### REFLECTOR INSTALLATION

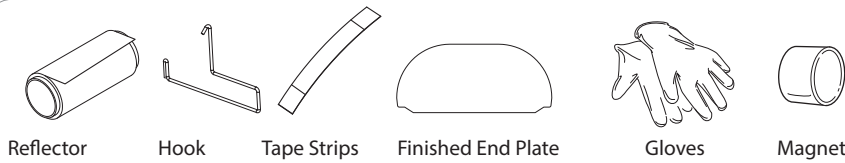


PRUDENTIAL LTG.

PRULITE.COM 213.746.0360



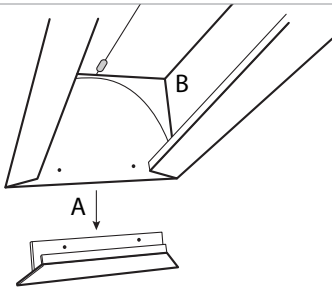
REFLECTOR  
INSTALLATION  
VIDEO



### PLEASE READ THE FOLLOWING INSTRUCTIONS CAREFULLY:

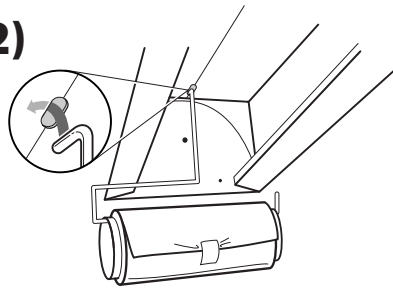
Test LEDs and confirm they are all lit before beginning Reflector install.

1)



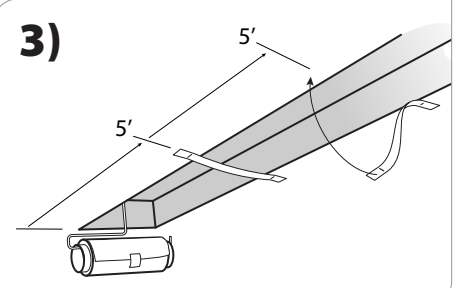
Remove trim (do not remove A from X7 ceilings). If corners are provided, remove foam inserts.

2)



Hang reflector roll from same end using hook. **MATTE SIDE OF FILM WILL FACE DOWN** towards room when installed. (Skip this step on rows of 8' or less)

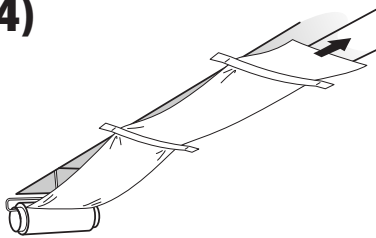
3)



Apply tape strips provided about 5' apart along housing.

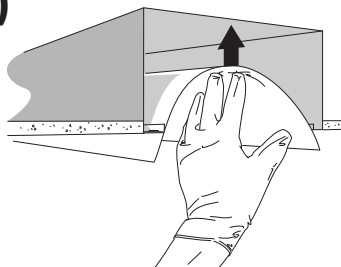
**NOTE:** Wait at least 24 hours after painting before using tape strips.

4)



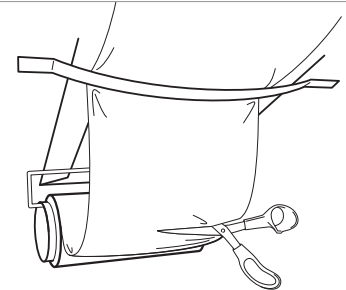
**USE GLOVES PROVIDED.** Pull reflector over entirety of housing row. Tighten roll to remove excess slack. Clamp roll to keep from unrolling.

5)



Push reflector into housing to proper position. Make sure no LED emitters are covered. Wire leads may need to be tucked away from emitters and reflector.

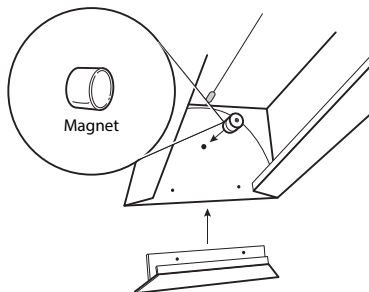
6)



Cut reflector to fit — from side with excess reflector (hook & roll side). **DO NOT UNDER-CUT.** Make small cuts until reflector fits into housing, covering curved end plate.

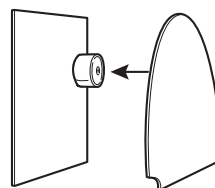
**For each corner:** Reflector should go into corner housing  $3\frac{3}{8}$ " and overlap corner reflector  $\sim\frac{1}{4}$ ".

7)



Install magnet and trim. For X7 trimless, only install magnet.

8)



Install finish end plate to magnets on each end of row. Adjust end plate as needed to close gaps along reflector.

### CLEANING INSTRUCTIONS:

Reflector film may be cleaned as needed. To avoid contaminating LED emitters, use only water and/or isopropyl alcohol solution on a clean wash cloth. Other cleaning chemicals could damage LED emitters.

**WARNING:** Ground fixture in accordance with local and national electrical codes. Failure to do so may result in serious personal injury.



Prudential Ltg. reserves the right to change design specifications or materials without notice. Please visit prulite.com for most current data.  
© 2015 All rights reserved – All products manufactured at: Prudential Ltg. 1774 E. 21st Street, Los Angeles, CA 90058

09-25-2020