

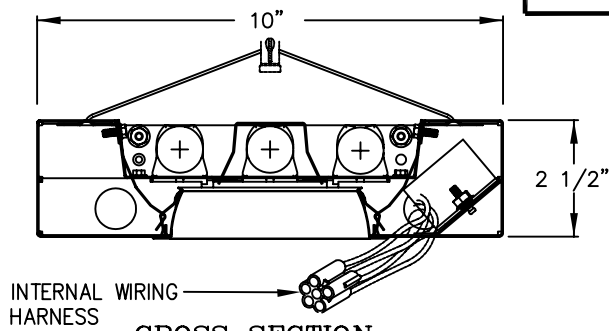
PRU15 INSTALLATION INSTRUCTIONS

WARNING:

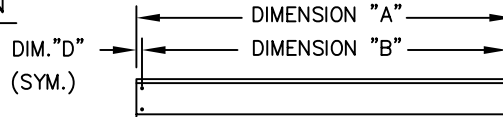
GROUND FIXTURE IN ACCORDANCE WITH LOCAL AND NATIONAL ELECTRICAL CODES. FAILURE TO DO SO MAY RESULT IN SERIOUS PERSONAL INJURY.

GENERAL NOTES

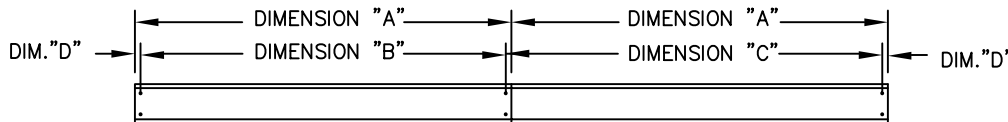
1. DO NOT COUPLE FIXTURES TOGETHER PRIOR TO HANGING. SEVERE DAMAGE TO THE FIXTURE MAY RESULT.
2. FOR CONTINUOUS ROW MOUNTING SEE LAYOUT OF ROWS/PATTERNS FOR DIMENSION DETAILS.
3. FOR CABLE INSTALLATION DETAIL SEE INSTALLATION INSTRUCTION DRAWING NO. 42151, CANOPY & CORD W/ TOGGLED CABLE AND 42152, CANOPY & TOGGLED CABLE.



CROSS SECTION



INDIVIDUAL FIXT. MTG.



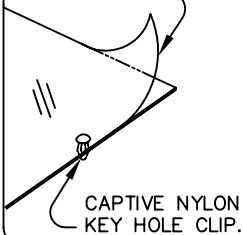
CONTINUOUS ROW MOUNTING PLAN

CABLE MOUNT DIMENSIONS			
OVERALL FIXTURE DIMENSION	INDIVIDUAL DIM. "A"	CONTINUOUS DIM. "C"	START/END DIM. "D"
4'-0"	47 1/2"	48"	1/4"
8'-0"	95 1/2"	96"	1/4"
12'-0"	143 1/2"	144"	1/4"

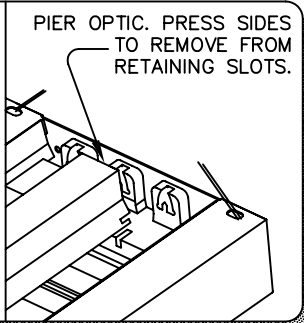
STEP 1. FIXT. PREP.

REMOVE PROTECTIVE FILM FROM DUST COVERS.

PIER OPTIC. PRESS SIDES TO REMOVE FROM RETAINING SLOTS.



CAPTIVE NYLON KEY HOLE CLIP.



REMOVE DUST COVER, PIER OPTIC COVER, AND REFLECTOR BEFORE HANGING.

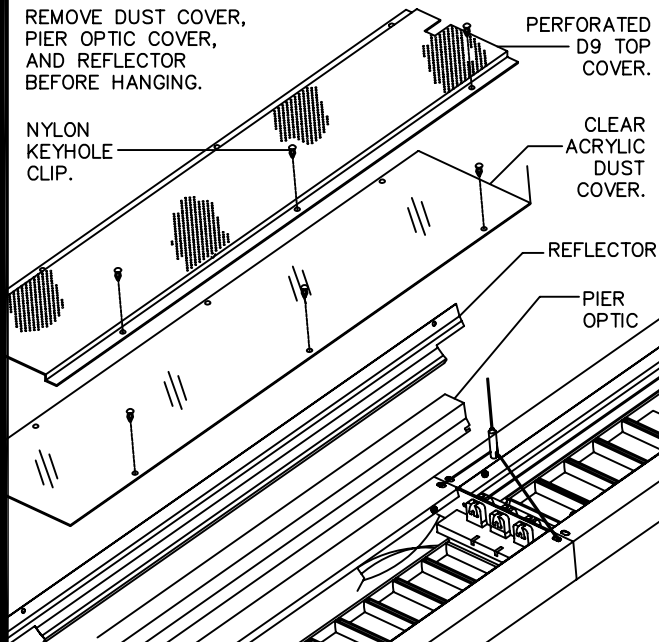
NYLON KEYHOLE CLIP.

PERFORATED D9 TOP COVER.

CLEAR ACRYLIC DUST COVER.

REFLECTOR

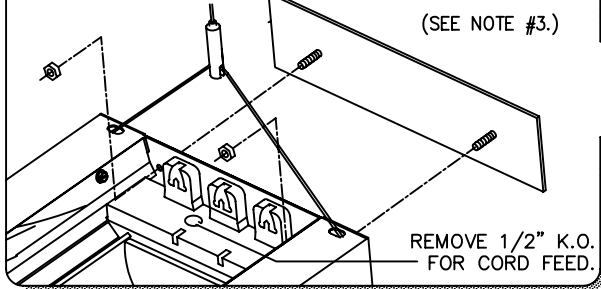
PIER OPTIC



STEP 2. HANGING FIXT.

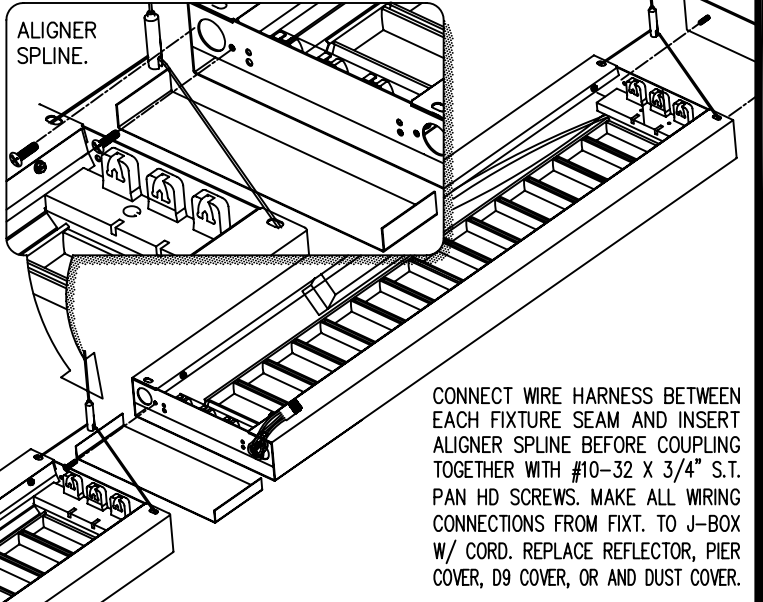
ATTACH FINISH END PLATE TO START AND END OF ROW FIXT. WITH #8-32 PAL NUTS PROVIDED. MOUNT 1st. FIXT. TO CEILING SURFACE.

(SEE NOTE #3.)



REMOVE 1/2" K.O. FOR CORD FEED.

ALIGNER SPLINE.



CONNECT WIRE HARNESS BETWEEN EACH FIXTURE SEAM AND INSERT ALIGNER SPLINE BEFORE COUPLING TOGETHER WITH #10-32 X 3/4" S.T. PAN HD SCREWS. MAKE ALL WIRING CONNECTIONS FROM FIXT. TO J-BOX W/ CORD. REPLACE REFLECTOR, PIER COVER, D9 COVER, OR AND DUST COVER.



1774 EAST 21ST STREET L.A. CA 90058
TEL. (213)746-0360 FAX (213)746-8838

PRUDENTIAL LTG. WWW.PRULITE.COM

DRAWN BY: S.P.H. DATE: 12/17/09

DWG. No.

47781

DISK No. ZD3

CHK. DATE

REV.