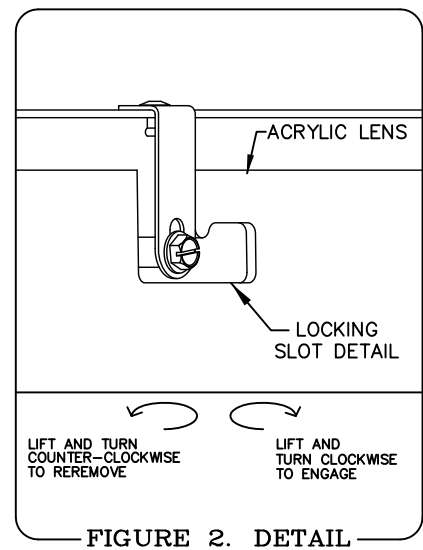
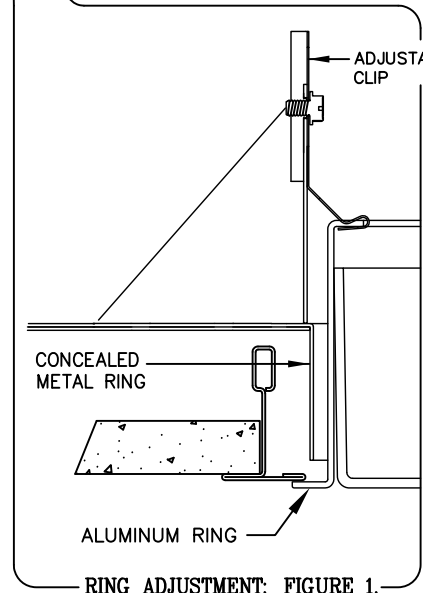
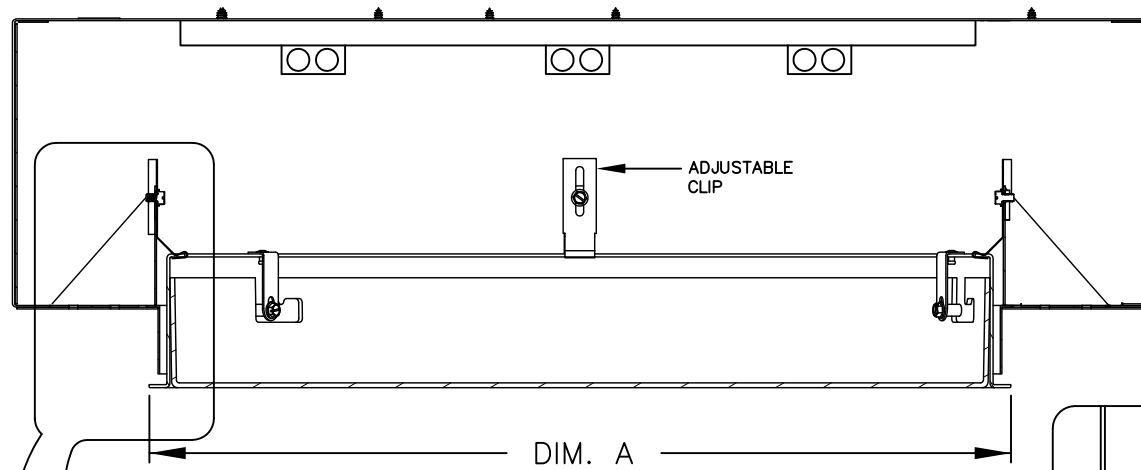


# P9000 SERIES T-BAR CEILING INSTALLATION INSTRUCTIONS



## NOTE:

INSTALLING FIXTURES PARALLEL WITH T-GRID WILL LIMIT ACCESS OF THE WIRE SUPPORT TO T-BAR GRID. TO AVOID THIS CONDITION PRUDENTIAL LIGHTING RECOMMENDS INSTALLING FIXTURES DIAGONAL ON T-BAR GRID. DIAGONAL MOUNTING WILL ALSO BE BENEFICIAL DURING REPLACEMENT OF FIELD TRIMMED CEILING TILES.

## ALUMINUM RING

1. REMOVE LENS BY TURNING BODY RIGHT SIDE UP AND LET LENS FALL OUT. IF LENS DOES NOT FALL OUT, GENTLY PUSH UP ON LENS AND ROTATE COUNTER-CLOCK-WISE (SEE FIG. 2 DETAIL). DO NOT ATTEMPT TO REMOVE RING.
2. LOWER RING BY LOOSENING SCREWS (DO NOT REMOVE) ON ADJUSTABLE CLIPS LOCATED IN BODY OF FIXTURE. SLIDE RING TO LOWEST POSITION AND TIGHTEN SCREWS.

## INSTALLING FIXTURES

1. REMOVE BALLAST COVERS FROM FIXTURE TO EXPOSE BALLAST LEAD WIRES.
2. FASTEN SUPPORT TABS ON EACH CORNER WITH #8 SHEET METAL SCREWS PROVIDED. TIE FIXTURE SUPPORT TABS TO STRUCTURAL MEMBER.
3. PLACE FIXTURES OVER TOP OF T-GRID CEILING. IN ORDER TO PROVIDE CLEARANCE FOR THE WIRE SUPPORT FROM GRID TO STRUCTURAL MEMBER, FIXTURE SHOULD BE TURNED DIAGONAL TO CEILING T-GRID. (SEE FIXTURE PLAN VIEWS). 1-1/2" T-GRID SHOULD BE THE SAME HEIGHT AS THE CONCEALED METAL RING ON FIXTURE. FIXTURE MUST BE TIED TO STRUCTURAL MEMBER INDEPENDENT FROM T-GRID.
4. CUT HOLE IN CEILING TILE (SEE CHART), THEN CUT TILE IN HALF TO FIT OVER ALUMINUM RING. TILES SHOULD BE CUT TO FIT AS CLOSE TO CONCEALED RING AS POSSIBLE (PREFERABLY TOUCHING). FLUSH HEAD TEK SCREWS CAN BE USED TO DRILL THROUGH METAL RING AND INTO CEILING IF REQUIRED. (SEE FIGURE 3 DETAIL). TEK SCREWS BY OTHERS.
5. MAKE ALL WIRING CONNECTIONS AND REPLACE FIXTURE BALLAST COVERS.
6. RAISE ALUMINUM RING BY LOOSENING SCREWS ON ADJUSTABLE CLIPS AND SLIDING RING UPWARDS UNTIL SNUG WITH CEILING. TIGHTEN SCREWS.

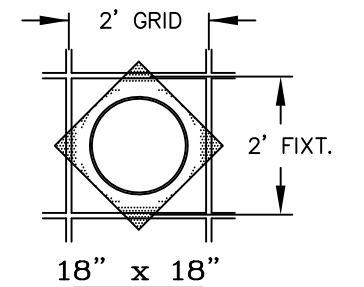
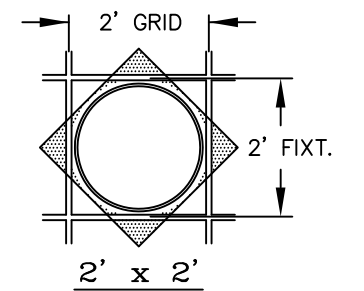
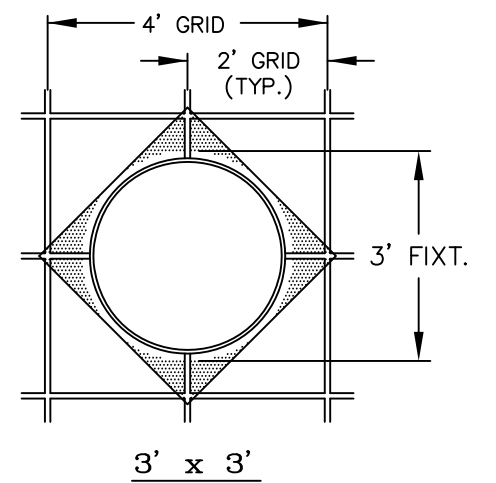
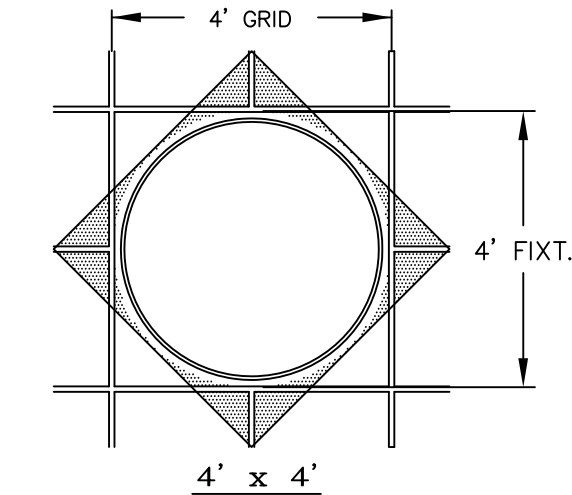
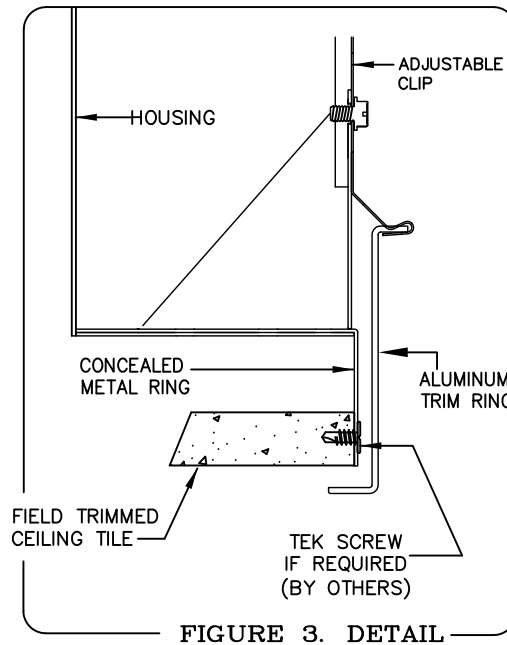
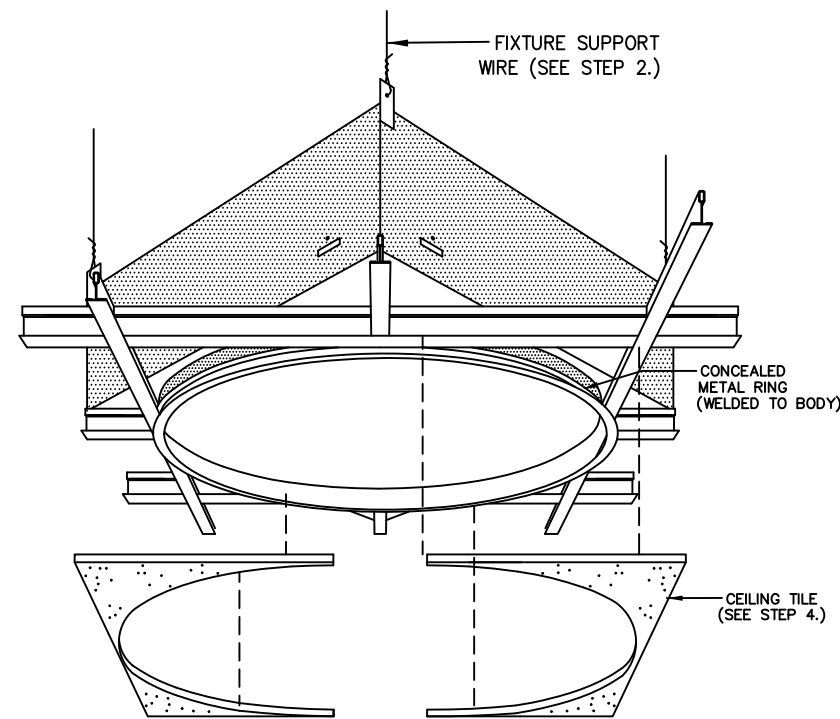


FIGURE PLAN VIEWS  
(NO SCALE)



INSTALLED PICTORIAL VIEW

NOTE: ALUMINUM TRIM RING HAS MINIMAL FLANGE. HOLE DIAMETER MUST BE PRECISELY CUT, PRUDENTIAL RECOMMENDS UNDERCUTTING BY 1/16" AND SHAVING TILE AS NEEDED TO FIT AROUND CONCEALED RING.

## VARIOUS OPENING CHART

NOMINAL SIZE	ALUMINUM RING DIM. A	CEILING TILE HOLE DIAMETER	FIXTURE/GRID ORIENTATION
ø18"	18-1/8"	ø17-3/4"	DIAGONAL
ø2'	23-1/8"	ø22-3/4"	DIAGONAL
ø3'	35-1/8"	ø34-3/4"	DIAGONAL
ø4'	47-1/8"	ø46-3/4"	DIAGONAL