

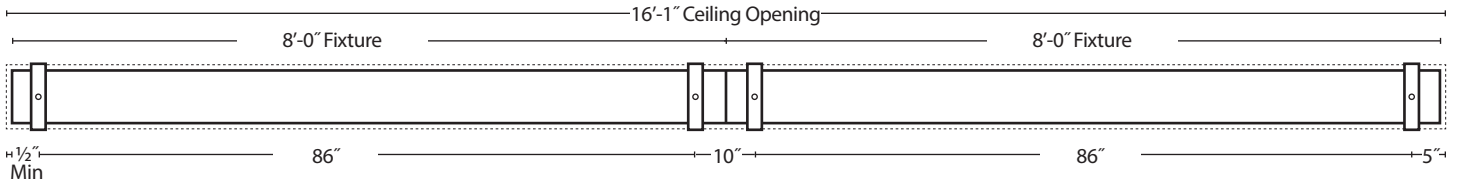


## INSTALLATION INSTRUCTIONS

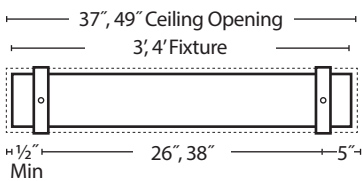
### GENERAL NOTES

- Length of ceiling opening is fixture row length plus 1/2" on each end.
- For continuous row mounting see layout of rows/ patterns for ceiling opening dimension and mounting bracket location details.

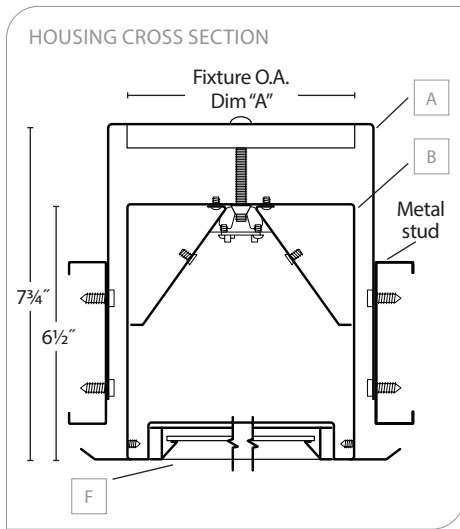
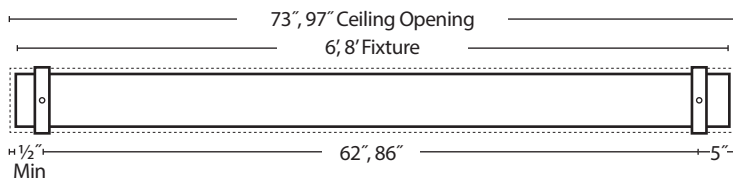
#### TYPICAL ROW PLAN :



#### 3', 4' FIXTURE PLAN :

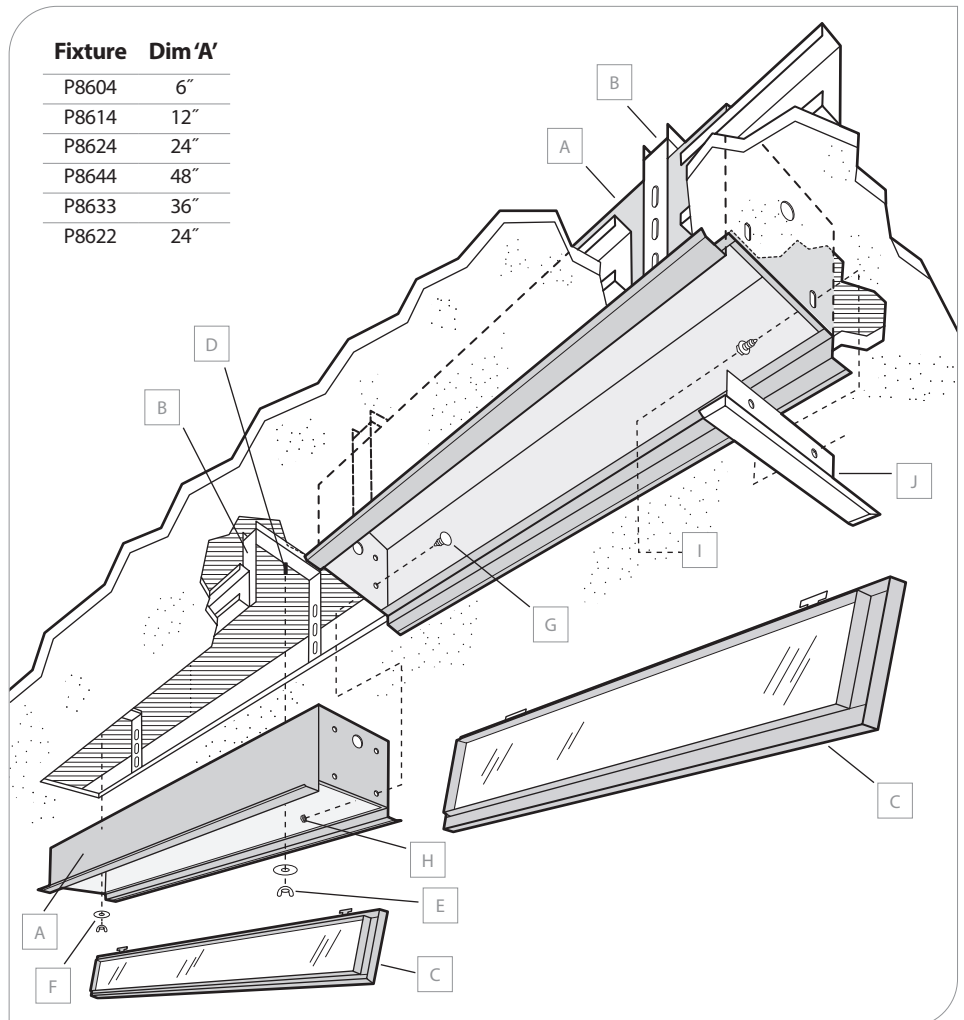


#### 6, 8' FIXTURE PLAN :



#### Fixture Dim 'A'

Fixture	Dim 'A'
P8604	6"
P8614	12"
P8624	24"
P8644	48"
P8633	36"
P8622	24"



#### PICTORIAL VIEW (STYLE "C" SHOWN) :

A	Modular Housing
B	Mounting Bracket
C	Door Frame
D	1/4-20 x 2 1/2" Bolt
E	1/4-20 Wing Nut
F	1/4" Fender Washer
G	#8-32 x 1/2" Screw
H	#8-32 x Hex Nut
I	#8 x 3/8" Sheet Metal Screws
J	End Trim Flange

**WARNING:** Ground fixture in accordance with local and national electrical codes. Failure to do so may result in serious personal injury. Fixture Installations should ONLY be done by a qualified licensed electrical professional.