



# P3900 / P4000 | Pendant

- Lens Install & Removal
- LED Board & Driver Replacement

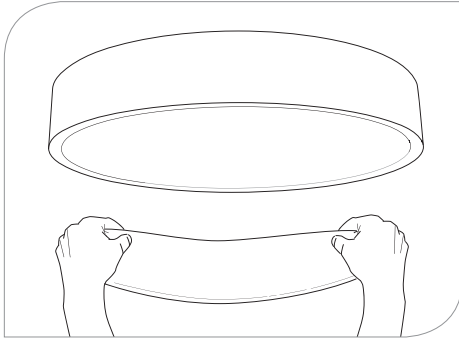
## INSTALLATION INSTRUCTIONS



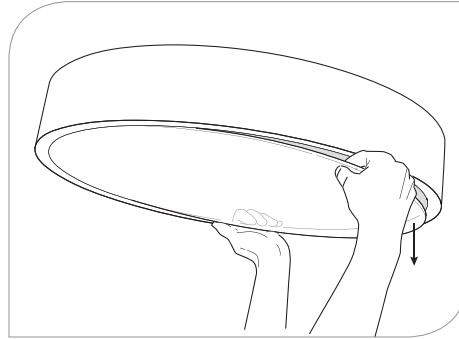
PRUDENTIAL LTG.

PRULITE.COM 213.746.0360

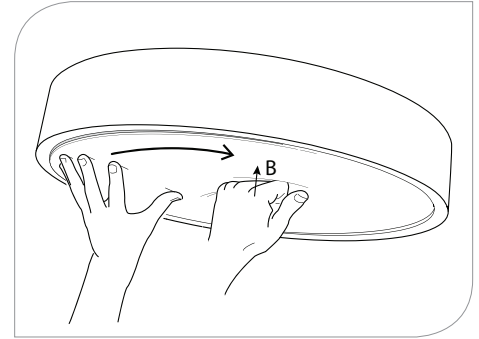
### LENS INSTALLATION



1. Flex lens in the middle.

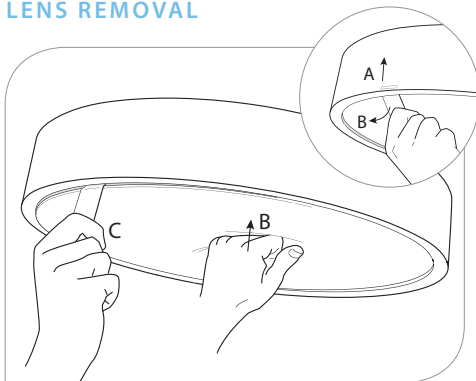


2. Insert lens into fixture at an angle, with leading edge deep into the housing.

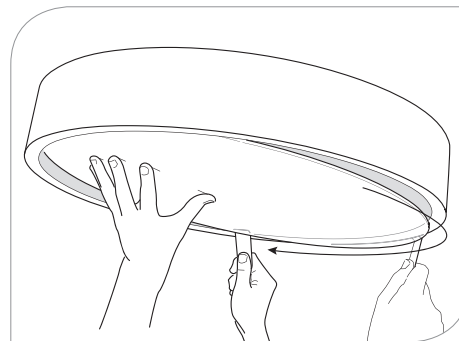


3. Press lens down in middle with one hand while pushing lens in along edge with other.

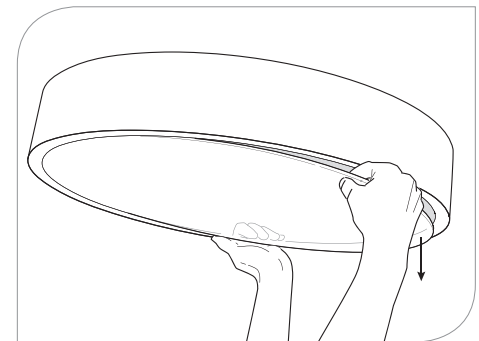
### LENS REMOVAL



1. Insert lens removal tool (A), push lens up in middle of fixture (B) and pull back to pop edge of lens out

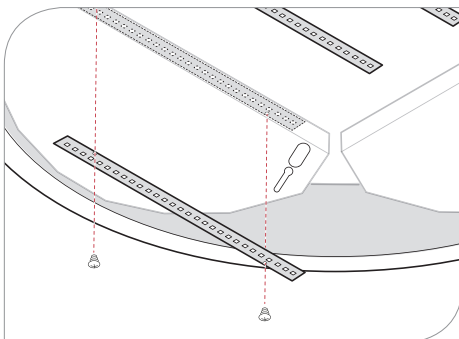


2. Slide tool slowly around rim to release lens (like a can opener)

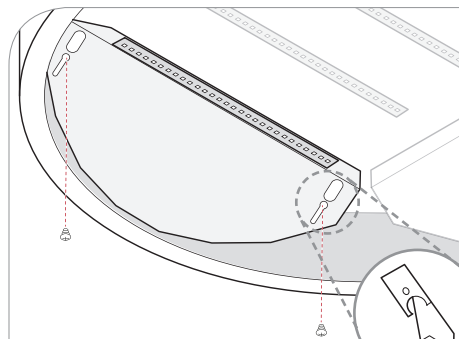


3. When more than 50% of lens is released (below trim), grab with both hands, flex lens in middle and remove

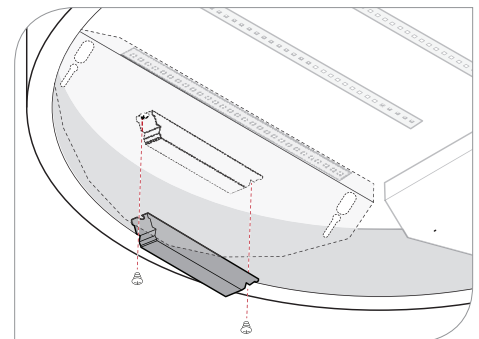
### LED BOARD REMOVAL



Disconnect the LED module wires from electrical wires. Remove screws holding LED board in place. Lift board from fixture.



1. Remove screws holding reflector in place.



2. Disconnect LED modules wires from electrical wires. Remove screws holding driver in place. Rotate and lift driver out of fixture using quick connectors.

**WARNING:** Ground fixture in according with local and national electrical codes. Failure to do so may result in serious personal injury.



Prudential Ltg. reserves the right to change design specifications or materials without notice. Please visit [prulite.com](http://prulite.com) for most current data.  
© 2014 All rights reserved – All products manufactured at: Prudential Ltg. 1774 E. 21st Street, Los Angeles, CA 90058

Pendant

1

01-03-2018