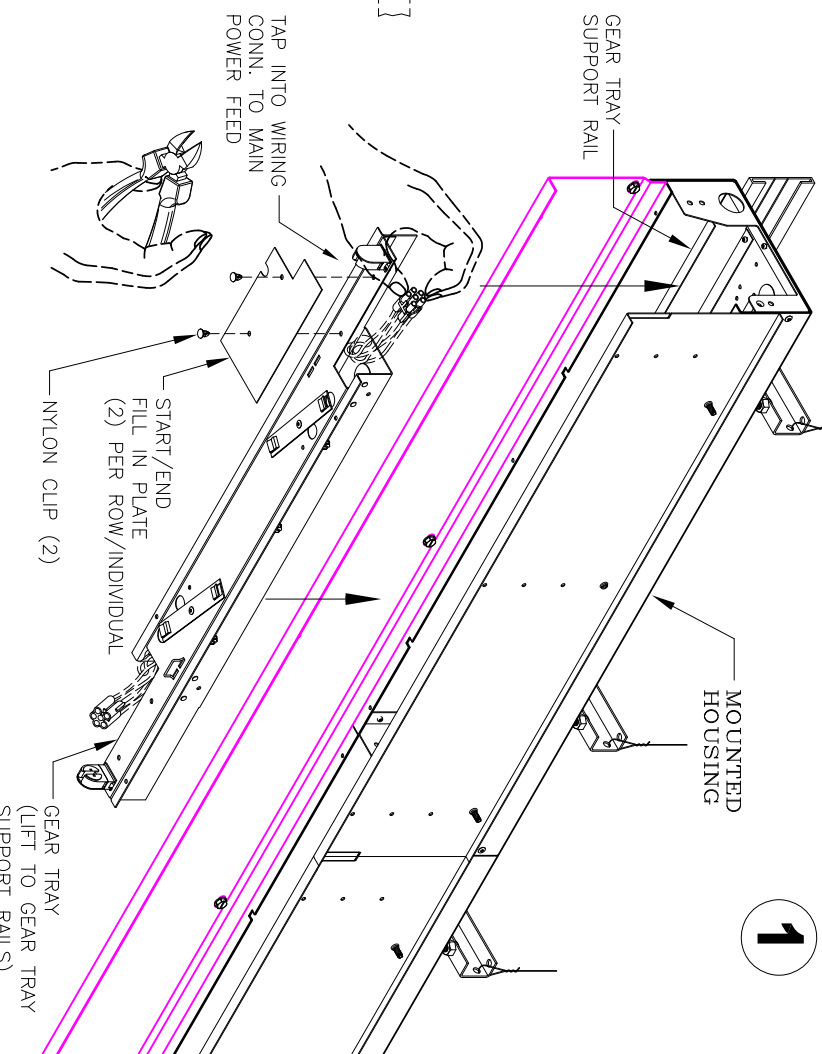
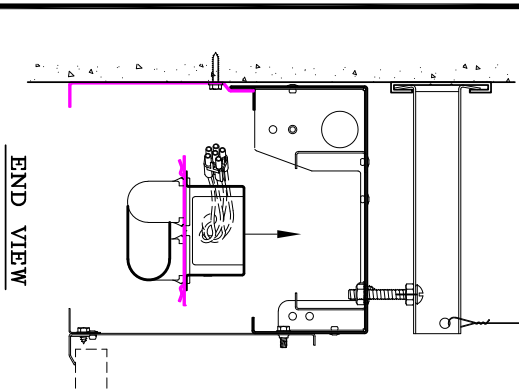
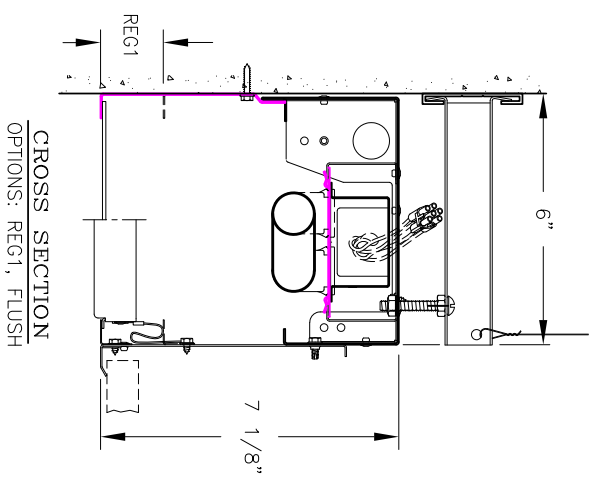
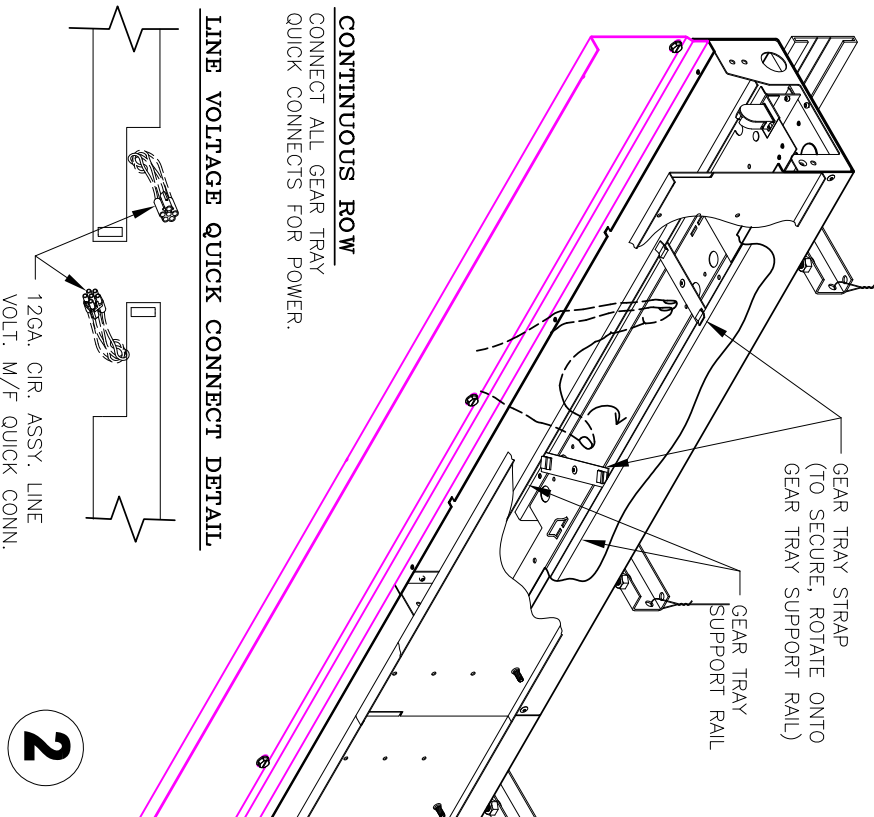


P83-T5/T8-X1/X3B STAGGERED SERIES GEAR TRAY INSTALLATION INSTRUCTIONS



▲ INSTALL GEAR TRAYS STARTING FROM LEFT TO RIGHT FACING WALL

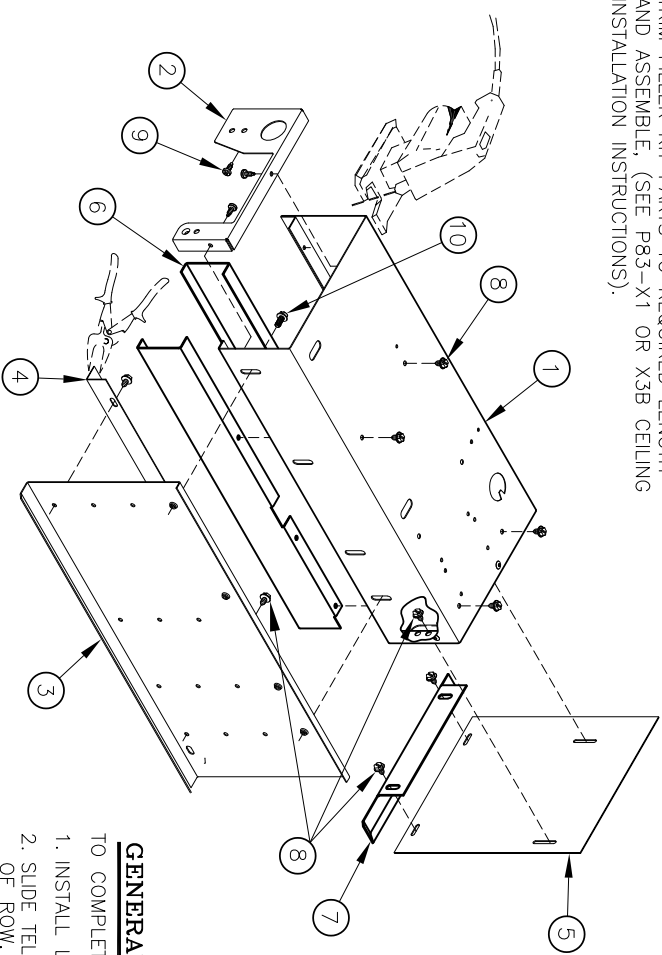


CONTINUOUS ROW
CONNECT ALL GEAR TRAY QUICK CONNECTS FOR POWER.

LINE VOLTAGE QUICK CONNECT DETAIL

12GA. CIR. ASSY. LINE
VOLT. M/F QUICK CONN.

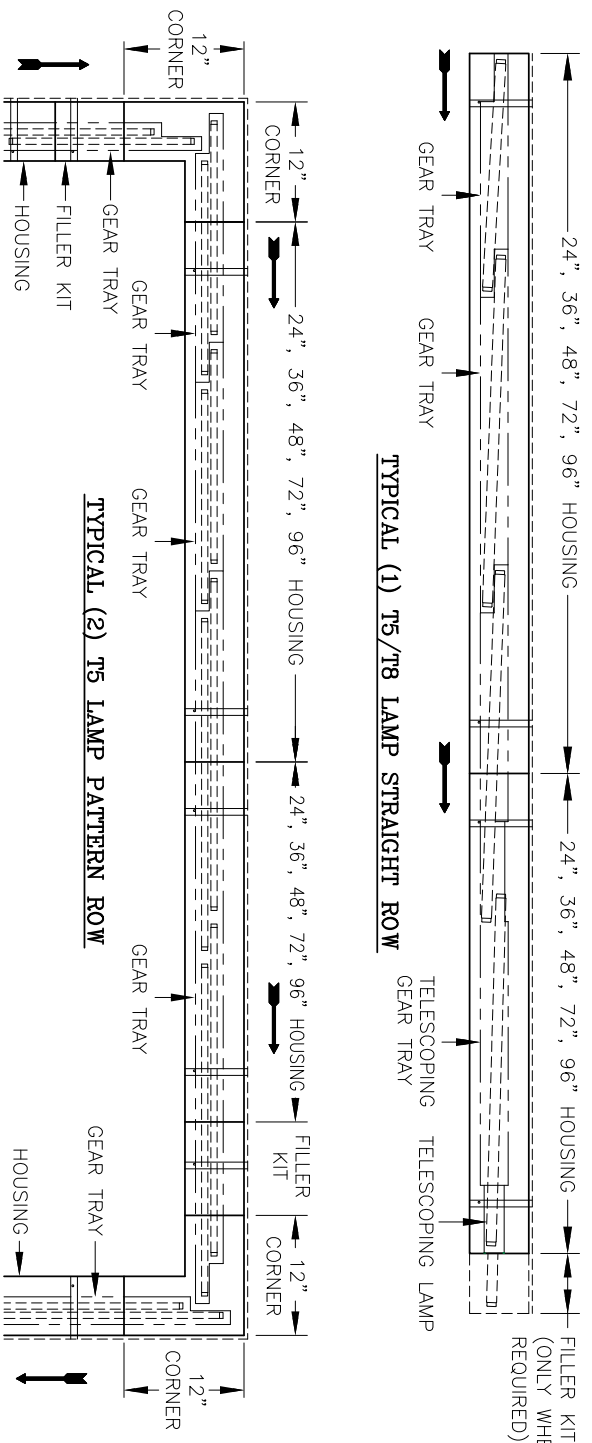
FILLER KIT ASSEMBLY
TRIM FILLER KIT PARTS TO REQUIRED LENGTH AND ASSEMBLE. (SEE P83-X1 OR X3B CEILING INSTALLATION INSTRUCTIONS).



- FILLER KIT COMPONENTS**
- SUB-ASSEMBLY BODY
 - END PLATE
 - PANEL
 - BOTTOM LENS RAIL
 - FINISH PLATE (2)
 - GEAR TRAY SUPPORT RAIL (2)
 - TRIM (X3) FOR START/END OF ROW (2)
 - #8 X 1/4" HEX HD. SCREW (14)
 - #6 X 3/8" PAN HD. TEK SCREW (3)
 - #8-32 X 3/8" HEX HD. TYPE F (2)

GENERAL COMMENTS
TO COMPLETE FIXTURE ROW INSTALLATION:

- INSTALL LAMPS (BY OTHERS).
- SLIDE TELESCOPING GEAR TRAY LAMP TO END OF ROW, OR INTO CORNER CONNECTOR.
- INSTALL STANDARD LENGTH LOUVERS OR DIFFUSERS INTO ROW.
- INSTALL CORNER LOUVERS (IF REQUIRED).
- FIELD CUT DIFFUSERS OR LOUVERS TO REQUIRED LENGTH AT END OF ROW.
- END PLATES ARE REQUIRED WHEN ROWS DO NOT START OR STOP AT WALL.



WARNING: GROUND FIXTURE IN ACCORDANCE WITH LOCAL AND NATIONAL ELECTRICAL CODES. FAILURE TO DO SO MAY RESULT IN SERIOUS PERSONAL INJURY.

- ▲ WE RESERVE THE RIGHT TO CHANGE DETAILS OF DESIGN. MATERIALS AND FINISH IN ANY WAY THAT WILL NOT ALTER INSTALLED APPEARANCE OR REDUCE FUNCTION AND PERFORMANCE.
- ▲ INSTALLATION MUST BE MADE IN ACCORDANCE WITH ALL LOCAL AND NATIONAL CODES.
- ▲ ALL HARDWARE SHIPPED IN BULK

ITEMS INCLUDED :

- ALIGNER SPLINES-(1) PER PANEL SEAM.
- SCREW-#6-32 X 1/4" PHILLIPS PAN HEAD SCREWS, (2) PER ALIGNER.
- SCREW-#8 X 1/4" PHILLIPS SHEET METAL SCREWS REQ'D. (2) LOUVER, (2) FINISH PLATE, (2) TRIM.
- SCREW-#8-32 X 3/8" HEX HD. TYPE F (2) PER SEAM, (2) PANEL.
- MOUNTING BRACKET ASS'Y-(2) PER FIXTURE, (1) PER FILLER.
- FINISH PLATE-(1) START, (1) END OF ROW (WHEN REQ'D).
- TRIM (X3)-(1) START, (1) END OF ROW (WHEN REQ'D).



PRUDENTIAL LTG.

1774 EAST 21ST STREET L.A. CA 90058
WWW.PRULITE.COM
TEL. (213)746-0360 FAX (213)746-8838

DRAWN BY: R. CORTEZ	DATE 04/9/14	DWG. No. 89606	REV. DATE 2.13.18
CHK.	DATE	LOCATION VAULT	REV. A