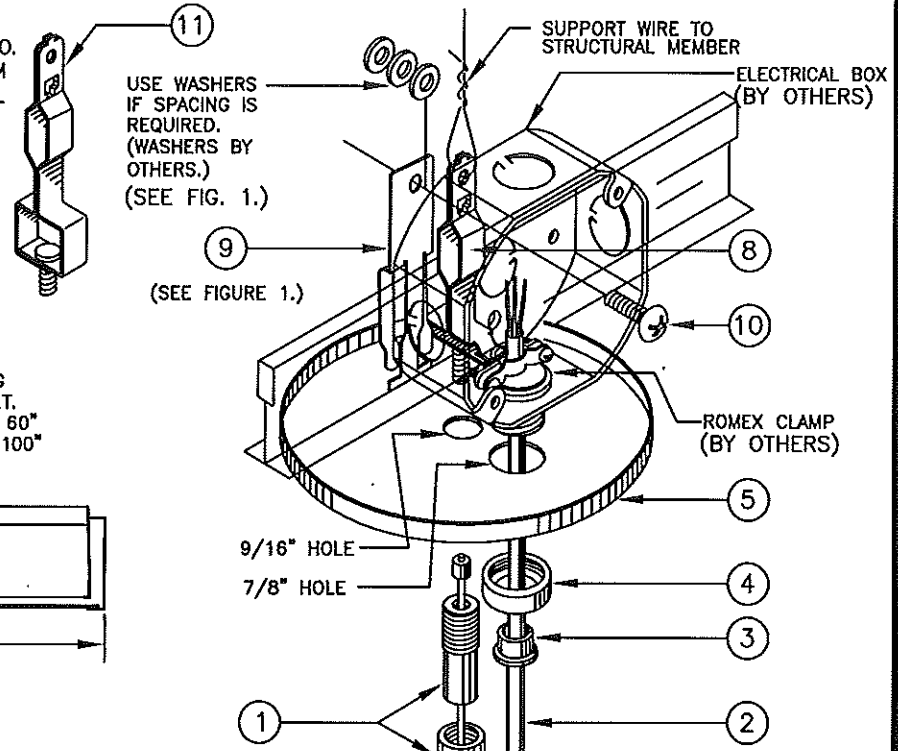
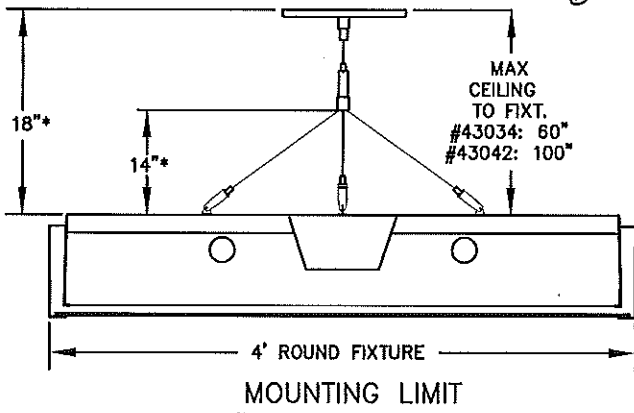


4-WAY MONOPOINT X1 INSTALLATION INSTRUCTIONS

WARNING:
GROUND FIXTURE IN ACCORDANCE WITH LOCAL AND NATIONAL ELECTRICAL CODES. FAILURE TO DO SO MAY RESULT IN SERIOUS PERSONAL INJURY.

NOTES: ELECTRICAL BOX MUST BE ATTACHED TO A.T. CLIP. REFER TO NEC 370-16 FOR MAXIMUM ELECTRICAL BOX FILL. ROMEX CLAMP AND ELECTRICAL BOX PROVIDED BY OTHERS.

MINIMUM MOUNTING DISTANCES:
*4' ROUND AND 3' LED ROUND

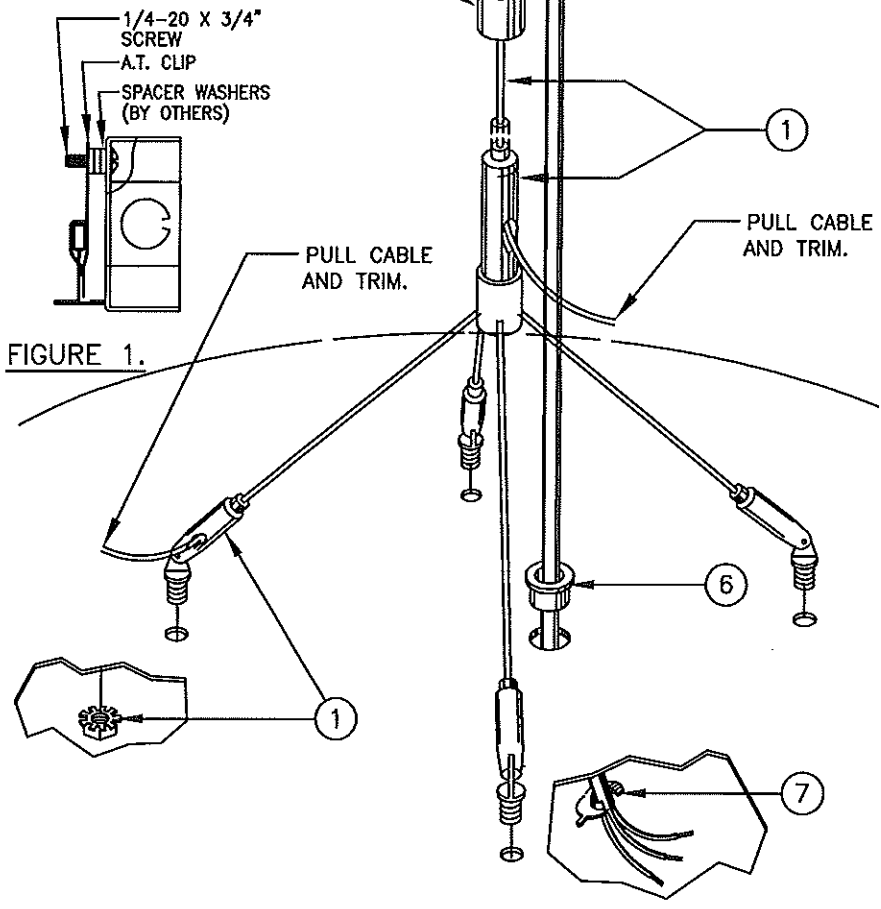


ASSEMBLY NUMBER 43034 (53" CABLE)

SYM.	P/N	PART DESCRIPTION	QTY.
11	100-00003-08	I.D.S. 95 CLIP (SLOT GRD CEILING OPTION)	1
10	100-00114-14	1/4-20 X 3/4" PHL. TRUSS HD. SCREW	1
9	100-00091-08	ERICO CADDY A.T. CLIP	1
8	100-00004-08	I.D.S. CLIP (STANDARD)	1
7	100-00063-08	METAL STRAIN RELIEF BUSHING	1
6	100-00040-10	WHITE SNAP BUSHING	1
5	28975	5-1/2" DIA. WHITE CANOPY	1
4	100-00042-10	THREADED BUSHING	1
3	100-00043-10	WHITE UNIVERSAL BUSHING	1
2	100-00032-09	18 GA. 3 WIRE SJT CORD 6'	1
		COUPLER W/ 53" CABLE	1
1	100-00088-08	4 WAY CABLE ADAPTER	1
		1/4-20 KEPS LOCK NUT	4
		PIVOTING CABLE GLIDER	4

ASSEMBLY NUMBER 43042 (96" CABLE)

SYM.	P/N	PART DESCRIPTION	QTY.
11	100-00003-08	I.D.S. 95 CLIP (SLOT GRD CEILING OPTION)	1
10	100-00114-14	1/4-20 X 3/4" PHL. TRUSS HD. SCREW	1
9	100-00091-08	ERICO CADDY A.T. CLIP	1
8	100-00004-08	I.D.S. CLIP (STANDARD)	1
7	100-00063-08	METAL STRAIN RELIEF BUSHING	1
6	100-00040-10	WHITE SNAP BUSHING	1
5	28975	5-1/2" DIA. WHITE CANOPY	1
4	100-00042-10	THREADED BUSHING	1
3	100-00043-10	WHITE UNIVERSAL BUSHING	1
2	100-00032-09	18 GA. 3 WIRE SJT CORD 10'	1
		COUPLER W/ 96" CABLE	1
1	100-00025-08	4 WAY CABLE ADAPTER	1
		1/4-20 KEPS LOCK NUT	4
		PIVOTING CABLE GLIDER	4



1774 EAST 21ST STREET L.A. CA 90058
TEL. (213)746-0360 FAX (213)746-8838
PRUDENTIAL LTG. WWW.PRULITE.COM

DRAWN BY: S.P.H. DATE: 6/5/09
CHK. REV. DATE: 2/2/15

DWG. No. 43034
43042

DISK No. ZD3
REV. A