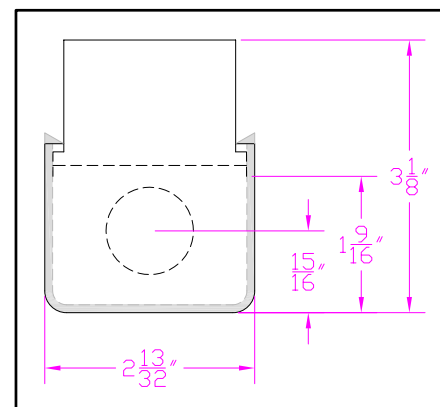


**IES INDOOR REPORT**  
**PHOTOMETRIC FILENAME : LLI120908A.IES**
**DESCRIPTION INFORMATION (From Photometric File)**

IESNA:LM-63-2002  
 [TEST] LLI 1209-08A  
 [TESTLAB] LIGHT LABORATORY INC  
 [ISSUE DATE] 12/9/2009  
 [MANUFAC] PRUDENTIAL LIGHTING  
 [LUMCAT] S1-1T8-04-SAL-TMW  
 [LUMINAIRE] 48-1/4"L. X 2-13/32"W. X 3-1/8"H. LINEAR FLUORESCENT LUMINAIRE  
 [MORE] WHITE REFLECTOR WITH FROAST ACRYLIC LENS  
 [BALLASTCAT] ADVANCE CENTIUM ICN-1P32-SC  
 [BALLAST] 120 TO 277VA 50/60Hz ELECTRONIC  
 [LAMPPOSITION] 0,90  
 [LAMPCAT] PHILIPS F32T8/TL835/ALTO  
 [\_LAMPLUM] 2950  
 [\_INPUT] 120VAC, 31.77W

**CHARACTERISTICS**

Lumens Per Lamp	2950 (1 lamp)
Total Lumens	2950
Luminaire Lumens	2441
Total Luminaire Efficiency	83 %
Luminaire Efficacy Rating (LER)	77
Total Luminaire Watts	31.77
Ballast Factor	1.00
CIE Type	Semi-Direct
Spacing Criteria (0-180)	1.16
Spacing Criteria (90-270)	1.54
Spacing Criteria (Diagonal)	1.54
Basic Luminous Shape	Rectangular w/Sides
Luminous Length (0-180)	4.00 ft
Luminous Width (90-270)	0.20 ft
Luminous Height	0.13 ft


**LUMINANCE DATA (cd/sq.m)**

Angle In Degrees	Average 0-Deg	Average 45-Deg	Average 90-Deg
45	4585	4347	4747
55	3763	4273	4874
65	3152	4142	5089
75	2316	3690	5367
85	15969	3834	5818

IES INDOOR REPORT  
PHOTOMETRIC FILENAME : LLI120908A.IES

CANDELA TABULATION

	<u>0.0</u>	<u>22.5</u>	<u>45.0</u>	<u>67.5</u>	<u>90.0</u>
<b>0</b>	420	420	420	420	420
<b>5</b>	416	417	421	425	427
<b>15</b>	393	402	416	429	434
<b>25</b>	351	370	399	422	432
<b>35</b>	295	325	370	408	422
<b>45</b>	249	275	339	391	412
<b>55</b>	168	206	308	373	401
<b>65</b>	106	151	265	353	383
<b>75</b>	50	121	199	321	354
<b>85</b>	142	84	162	285	318
<b>90</b>	132	77	152	267	301
<b>95</b>	127	73	145	253	286
<b>105</b>	109	65	147	219	247
<b>115</b>	91	56	123	179	202
<b>125</b>	33	46	99	141	157
<b>135</b>	13	41	77	107	119
<b>145</b>	8	24	59	78	86
<b>155</b>	9	15	38	51	57
<b>165</b>	9	12	17	25	27
<b>175</b>	10	9	10	11	10
<b>180</b>	0	0	0	0	0

**IES INDOOR REPORT**  
**PHOTOMETRIC FILENAME : LLI120908A.IES**

**ZONAL LUMEN SUMMARY**

Zone	Lumens	%Lamp	%Fixt
0-30	241.43	8.2	9.9
0-40	449.79	15.2	18.4
0-60	958.85	32.5	39.3
0-90	1773.87	60.1	72.7
90-120	411.85	14	16.9
90-130	516.84	17.5	21.2
90-150	631.22	21.4	25.9
90-180	667.41	22.6	27.3
0-180	2441.27	82.8	100

Total Luminaire Efficiency = 82.8%

**ZONAL LUMEN SUMMARY**

Zone	Lumens
0-10	10.06
10-20	79.52
20-30	151.85
30-40	208.37
40-50	246.14
50-60	262.92
60-70	259.06
70-80	238.83
80-90	317.12
90-100	95.15
100-110	173.45
110-120	143.25
120-130	104.99
130-140	70.48
140-150	43.91
150-160	23.62
160-170	9.79
170-180	2.78

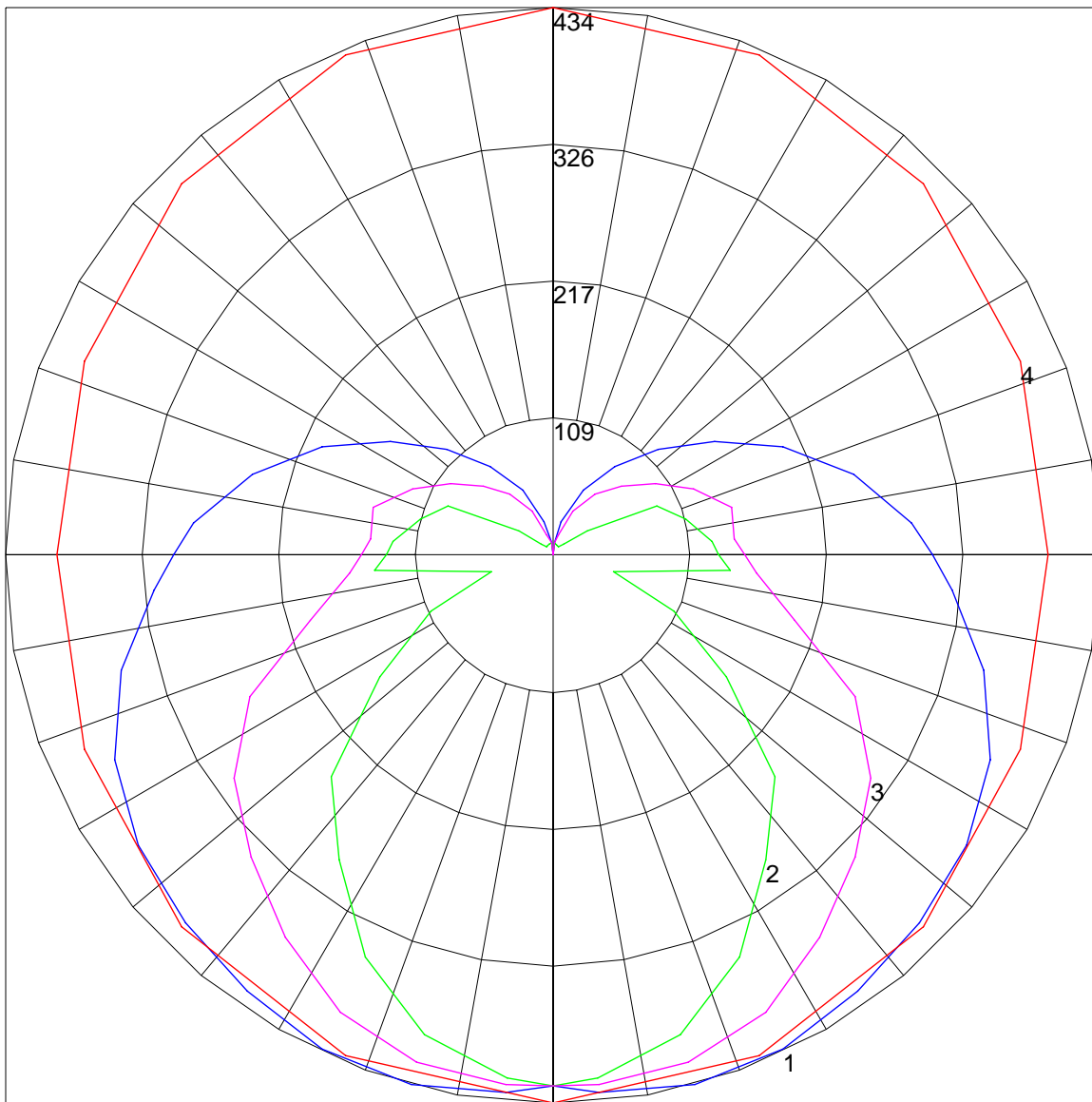
IES INDOOR REPORT  
 PHOTOMETRIC FILENAME : LLI120908A.IES

COEFFICIENTS OF UTILIZATION - ZONAL CAVITY METHOD

Effective Floor Cavity Reflectance 0.20

RC	80				70				50			30			10			0
RW	70	50	30	10	70	50	30	10	50	30	10	50	30	10	50	30	10	0
0	93	93	93	93	88	88	88	88	79	79	79	71	71	71	64	64	64	60
1	80	75	69	65	76	70	66	62	63	59	55	55	52	50	49	46	44	41
2	72	63	56	50	67	59	53	47	53	47	43	46	42	38	41	37	34	31
3	64	54	46	40	60	51	44	38	45	39	34	40	35	31	35	31	27	24
4	58	47	39	32	55	44	37	31	39	33	28	35	30	25	30	26	23	20
5	53	41	33	27	50	39	32	26	35	28	24	31	25	21	27	22	19	16
6	49	37	29	23	46	35	27	22	31	25	20	27	22	18	24	20	16	14
7	45	33	25	20	42	31	24	19	28	22	17	25	19	16	22	17	14	12
8	42	30	22	17	39	28	21	16	25	19	15	22	17	14	20	15	12	10
9	39	27	20	15	36	26	19	14	23	17	13	21	16	12	18	14	11	9
10	36	25	18	13	34	23	17	13	21	16	12	19	14	11	17	13	10	8

POLAR GRAPH



Maximum Candela = 434 Located At Horizontal Angle = 90, Vertical Angle = 15  
# 1 - Vertical Plane Through Horizontal Angles (90 - 270) (Through Max. Cd.) : BLUE  
# 2 - Vertical Plane Through Horizontal Angles (0 - 180) : GREEN  
# 3 - Vertical Plane Through Horizontal Angles (45 - 225) : MAGENTA  
# 4 - Horizontal Cone Through Vertical Angle (15) (Through Max. Cd.) : RED

NOTE: ALL TESTS ASSUME BALLAST FACTOR (BF) = 1.0 UNLESS STATED.  
IF TEST OR OTHER BALLAST USED HAS A BF OTHER THAN 1.0, ALL  
LUMEN, CANDELA, AND LUMINANCE VALUES SHOULD BE MULTIPLIED BY  
THE BF, CU, EFFICIENCY AND % FLUX VALUES REMAIN AS LISTED.  
TOTAL WATTS VALUE APPLIES ONLY TO TESTED BALLAST.