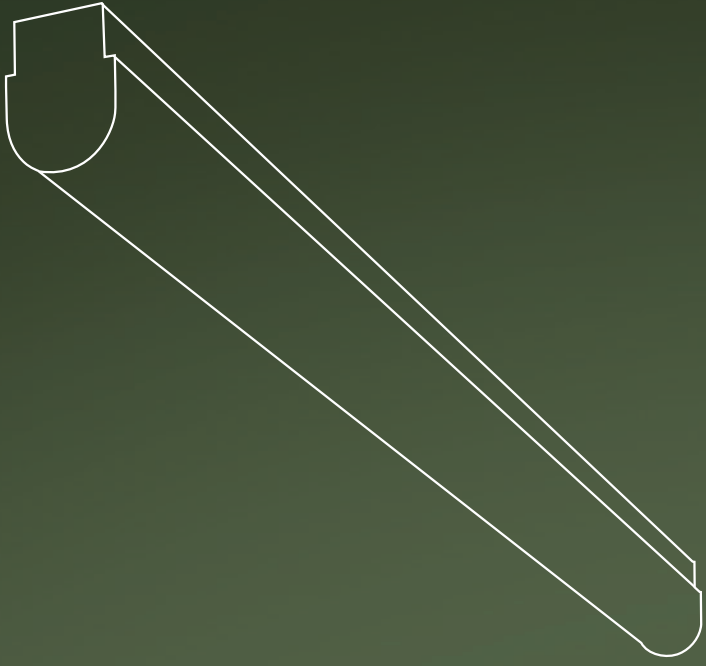


**Snap**

With two new lens designs, Prudential Ltg. increases the efficiency of Snap up to 90%.



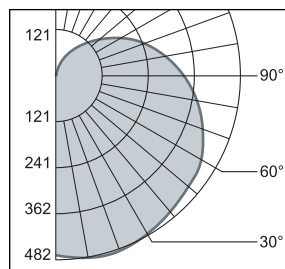
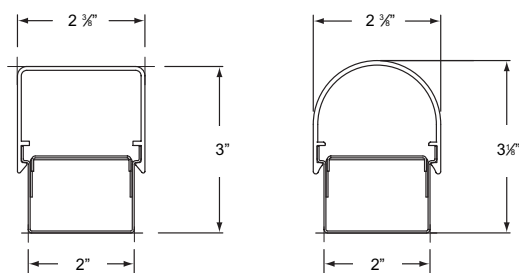
simple



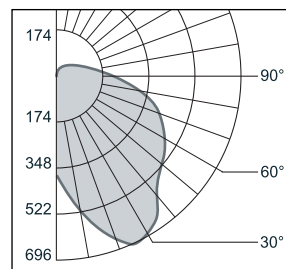
At **Prudential Ltq.**, we've just made one of our most popular linear fixtures even more efficient. Snap, our ingeniously simple solutions to a wide range of lighting applications, now offers up to 90% efficiency. The secret is two new lens designs. A new linear prismatic lens makes Snap ideal for lighting shelves, casting light in a precisely defined stack pattern. The other new lens is a satin acrylic lens. More translucent than a conventional white lens, it offers a moderate lamp obscuration while achieving nearly 90% efficiency. Both lenses are now available on our round profile Snap.



**same slim profile** New round shape. Both styles are available with 1T8, T5 or T5HO, or with 2T5 lamp rows.



**S1-1T5-04-SAL-YGW** Square profile with 1T5 and satin acrylic lens is 89% efficient

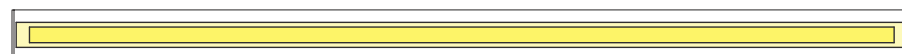


**R1-1T5-04-LPA-TMW** Round profile with clear stacklight lens is 90% efficient

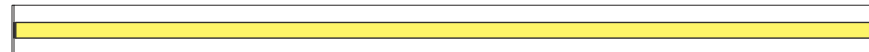


**OWP/P** uses the Snap as a clean line that not only gives ambient light, but also is a graphic design element within the architecture in the Toshiba Medical Research Institute in Vernon Hills, Illinois.

24", 36" or 48"



T5OPT 22 1/2", 34 3/8" or 46 1/2"



**New T5OPT Option** Minimize socket shadows with fixture lengths optimized for the shorter T5 lamps.

**features** Now our popular Snap has a new round shape within the same slender 2" x 3" profile, available for one T8 or T5HO, or up to two T5 lamp rows. Snap can be joined in elegant modular rows with a clean, single plate between the white acrylic lenses - with no visible hardware or fasteners. Six- and Eight-foot fixtures have two lenses with a single intermediate plate.

**finish** Choose from any of 22 standard and premium colors in environmentally-friendly polyester powder paint, or from our galvanized steel finish.

**mounting** Snap can be surface- or wall-mounted, or suspended with adjustable aircraft cables.

**options** Hold the lens secure to the housing with **TRS** new discreet tamper resistant hardware. With our **T5OPT** option, T5 and T5HO fixtures can be specified in shorter T5 optimized lengths that minimize socket shadows. And now the Snap is available with our **S-Occ**™ integrated occupancy system for enhanced energy savings. Specify in one of three ways: **OCO**: S-Occ™ - all lamps on/off; **OC2C**: S-Occ™ - one lamp sensed, one lamp on constantly; **OCDM**: S-Occ™ - dim to standby mode.

Go to **prulite.com** for more specification guidelines and ordering information.

series	lamp rows	nominal length	shielding	color/finish	voltage	mounting	ceiling system*	options
S1	square profile	1T8	02'	WA white acrylic	YGW glass white	120	SUR* surface or wall mount	X1 exposed T-bar
	R1	round profile	1T5	03'	SAL satin acrylic lens	TMW textured matte white	277	CA48* aircraft cable (adjustable)
2T5		04'	LPA* linear prismatic acrylic stack optic lens	YPE pewter	347	CA96* aircraft cable (adjustable)	X6 slot grid	
		06'	Y__ premium color	UNV*				
		08'	CC custom color	*120-277				
		R_*	GLV* galvanized	*is ADA compliant				
		*row length	*R1 profile only				*specify with cable mount only	

- This fixture offers control options, enhanced with energy savings.
- This fixture has been tested with efficiencies at or above 80%.
- This fixture is compliant with the Americans with Disabilities Act.

\*endplate will be black paint finish


\*T5/HO optimized fixture lengths




With its optional occupancy sensors, Snap makes it easy to maximize energy efficiencies.



TannerHecht Architecture  
Energy Foundation  
San Francisco, CA

This fixture offers control options, enhanced with energy savings. 

This fixture has been tested with efficiencies at or above 80%. 

This fixture is compliant with the Americans with Disabilities Act. 

Waste not, want not. As part of our efforts to ensure we practice sustainability in our business, we've printed this brochure on recycled paper.



Light creates Life.  
Create with Prudential  
Ltg.

Prudential Ltg.  
1737 East 22nd St  
Los Angeles, CA 90058  
Tel 213.746.0360  
prulite.com

