

ordering

series	body style	lamp rows	nominal length	shielding	color/finish	circuiting	voltage	mounting
P-1600	2	2T8	04'	PRA	YGW	SC	UNV	SUR
P-1600 damp	2 8 7/8"	2T8	04'	PRA prismatic acrylic lens	YGW gloss white	SC single circuit	UNV* <small>*120-277</small>	SUR surface

Quick Ship Fixtures with the ordering configuration listed above are stock items, and ship within 48 hours of order placement. For quantities greater than 10 pieces of P1600, please consult factory.

Applications Open offices, corridors, stairwells, small offices, retail, healthcare, schools.

Features A heavy-duty versatile enclosed commercial fixture. The fixture is surface-mounted. It features a patented scissor-spring latch to hold the clear prismatic acrylic lens.

Construction The housing is made of 20-gauge cold-rolled steel.

Finish The exterior body color is gloss white (YGW) using polyester powder paint.

Electrical T8 fixtures have universal voltage (120-277) instant start ballasts with <20% total harmonic distortion. Fixtures are U.L. damp labeled and I.B.E.W. manufactured.

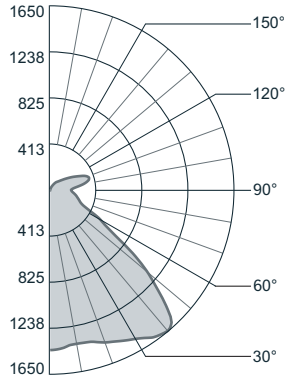
Mounting Fixture is to be surface-mounted.

Options Options available on made-to-order fixtures only.

photometric data

P-1600-2-2T8-04-PRA-YGW

Report # LSI15377 D=86.2% I=13.8%
 Spacing Criteria: Along 1.2; Across 1.7
 Lamp Lumens: 2950 Input Watts: 59



Candlepower Summary

Vertical Angle	Horizontal Angle					Output Lumens
	0°	22.5°	45°	67.5°	90°	
0	1438	1438	1438	1438	1438	
5	1434	1435	1430	1420	1422	137
15	1380	1373	1379	1400	1412	393
25	1275	1280	1381	1464	1497	637
35	1100	1195	1398	1553	1615	861
45	725	983	1255	1401	1471	877
55	267	369	585	736	710	502
65	122	205	265	387	324	278
75	93	136	215	253	250	205
85	24	92	149	199	199	150
90	0	58	113	181	187	
95	0	52	115	198	220	133
105	0	43	143	313	359	175
115	0	45	196	279	294	163
125	0	46	123	171	180	96
135	0	24	65	95	111	48
145	0	11	42	61	77	25
155	1	0	17	30	36	8
165	1	0	1	6	9	1
175	0	0	0	0	0	0
180	0	0	0	0	0	0

Zonal Lumen Summary

Zone	% Lamp	% Luminaire
0-90	68.48	86.18
90-180	10.98	13.82

Efficiency = 79.5%

Luminance Summary (cd/m²)

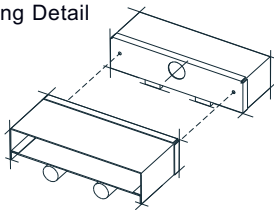
Angle	0°	45°	90°
45	3974	5783	6354
55	1802	3109	3462
65	1121	1724	1878
75	1393	1871	1863
85	1059	2073	2155

Coefficients of Utilization (%)

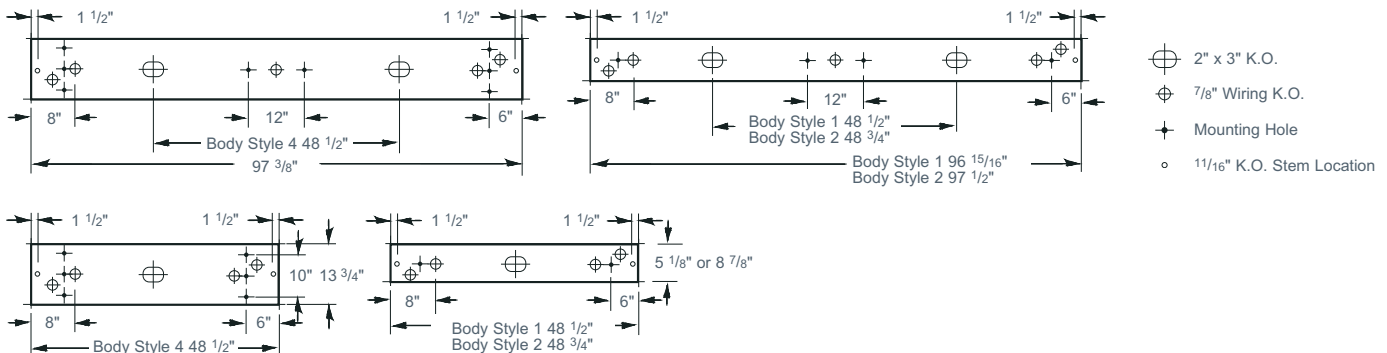
Floor	effective floor cavity reflectance = .20										
	80	70	50	30	10						
Ceiling	70	50	30	10	50						
Wall	50	30	10	50	30						
RCR	0	1	2	3	4						
0	92	92	92	92	89	89	89	89	82	82	82
1	85	81	78	75	81	78	75	73	73	71	69
2	78	72	67	63	75	70	65	61	65	62	58
3	72	64	58	54	69	62	57	53	58	54	51
4	66	58	51	47	64	56	50	46	53	48	44
5	61	51	45	40	58	50	44	39	47	42	38
6	56	46	40	35	54	45	39	34	42	37	33
7	52	42	35	31	50	40	34	30	38	33	29
8	48	37	31	26	46	36	30	26	34	29	25
9	44	34	27	23	42	33	27	22	31	25	22
10	40	30	24	20	39	29	24	20	28	23	19

installation

Adjoining Detail



Mounting Locations



In an effort to continually provide the highest quality products, Prudential reserves the right to change design specifications and/or materials, without notice.